

L3MBTL3 Antibody (N-term)
Affinity Purified Rabbit Polyclonal Antibody (Pab)
Catalog # AP20376a

Specification

L3MBTL3 Antibody (N-term) - Product Information

Application	WB,E
Primary Accession	Q96JM7
Reactivity	Human
Host	Rabbit
Clonality	Polyclonal
Isotype	Rabbit IgG
Calculated MW	88337
Antigen Region	90-116

L3MBTL3 Antibody (N-term) - Additional Information

Gene ID 84456

Other Names

Lethal(3)malignant brain tumor-like protein 3, H-l(3)mbt-like protein 3, L(3)mbt-like protein 3, MBT-1, L3MBTL3, KIAA1798, MBT1

Target/Specificity

This L3MBTL3 antibody is generated from rabbits immunized with a KLH conjugated synthetic peptide between 90-116 amino acids from the N-terminal region of human L3MBTL3.

Dilution

WB~~1:1000

Format

Purified polyclonal antibody supplied in PBS with 0.09% (W/V) sodium azide. This antibody is purified through a protein A column, followed by peptide affinity purification.

Storage

Maintain refrigerated at 2-8°C for up to 2 weeks. For long term storage store at -20°C in small aliquots to prevent freeze-thaw cycles.

Precautions

L3MBTL3 Antibody (N-term) is for research use only and not for use in diagnostic or therapeutic procedures.

L3MBTL3 Antibody (N-term) - Protein Information

Name L3MBTL3 ([HGNC:23035](#))

Synonyms KIAA1798, MBT1

Function Is a negative regulator of Notch target genes expression, required for RBPJ-mediated transcriptional repression (PubMed:[29030483](#)). It recruits KDM1A to Notch-responsive elements and promotes KDM1A-mediated H3K4me demethylation (PubMed:[29030483](#)). Involved in the regulation of ubiquitin-dependent degradation of a set of methylated non-histone proteins, including SOX2, DNMT1 and E2F1. It acts as an adapter recruiting the CRL4-DCAF5 E3 ubiquitin ligase complex to methylated target proteins (PubMed:[30442713](#), PubMed:[29691401](#)). Required for normal maturation of myeloid progenitor cells (By similarity).

Cellular Location

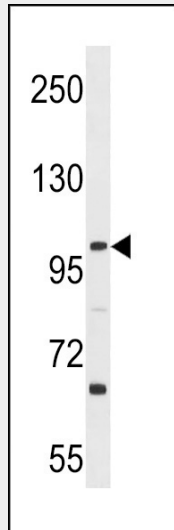
Nucleus.

L3MBTL3 Antibody (N-term) - Protocols

Provided below are standard protocols that you may find useful for product applications.

- [Western Blot](#)
- [Blocking Peptides](#)
- [Dot Blot](#)
- [Immunohistochemistry](#)
- [Immunofluorescence](#)
- [Immunoprecipitation](#)
- [Flow Cytometry](#)
- [Cell Culture](#)

L3MBTL3 Antibody (N-term) - Images



L3MBTL3 Antibody (N-term) (Cat. #AP20376a) western blot analysis in Ramos cell line lysates (35ug/lane). This demonstrates the L3MBTL3 antibody detected the L3MBTL3 protein (arrow).

L3MBTL3 Antibody (N-term) - Background

Putative Polycomb group (PcG) protein. PcG proteins maintain the transcriptionally repressive state of genes, probably via a modification of chromatin, rendering it heritably changed in its expressibility. Required for normal maturation of myeloid progenitor cells (By similarity).