

**GTDC1 Antibody (Center)**  
**Affinity Purified Rabbit Polyclonal Antibody (Pab)**  
**Catalog # AP20381c**

**Specification**

---

**GTDC1 Antibody (Center) - Product Information**

Application	WB,E
Primary Accession	<a href="#">Q4AE62</a>
Reactivity	Human
Host	Rabbit
Clonality	Polyclonal
Isotype	Rabbit IgG
Calculated MW	52597
Antigen Region	278-304

**GTDC1 Antibody (Center) - Additional Information**

**Gene ID** 79712

**Other Names**

Glycosyltransferase-like domain-containing protein 1, Mat-Xa, GTDC1

**Target/Specificity**

This GTDC1 antibody is generated from rabbits immunized with a KLH conjugated synthetic peptide between 278-304 amino acids from the Central region of human GTDC1.

**Dilution**

WB~~1:1000

**Format**

Purified polyclonal antibody supplied in PBS with 0.09% (W/V) sodium azide. This antibody is purified through a protein A column, followed by peptide affinity purification.

**Storage**

Maintain refrigerated at 2-8°C for up to 2 weeks. For long term storage store at -20°C in small aliquots to prevent freeze-thaw cycles.

**Precautions**

GTDC1 Antibody (Center) is for research use only and not for use in diagnostic or therapeutic procedures.

**GTDC1 Antibody (Center) - Protein Information**

**Name** GTDC1 {ECO:0000303|PubMed:15068588, ECO:0000312|HGNC:HGNC:20887}

**Function** Glycosyltransferase that specifically catalyzes mannosylation of cytoplasmic tRNA(Asp) modified with queuosine at position 34 (queuosine(34)) (PubMed:[37992713](#)). Mannosylates the cyclopentene moiety of queuosine(34) in tRNA(Asp) to form mannosyl-queuosine(34)

(PubMed:[37992713](#)). Mannosylation of queuosine(34) in tRNA(Asp) is required to slow-down elongation at cognate codons, GAC and GAU, thereby regulating protein translation (PubMed:[37992713](#)).

#### Cellular Location

Cytoplasm. Nucleus

#### Tissue Location

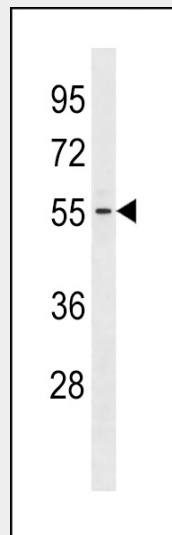
Ubiquitous. Expressed at high levels in the lung, brain, spleen, testis, placenta. ovary, pancreas, spleen and peripheral blood leukocytes. Expressed at low level in the colon, small intestine, kidney, skeletal muscle and thymus. Expressed at high level in colon adenocarcinoma.

### GTDC1 Antibody (Center) - Protocols

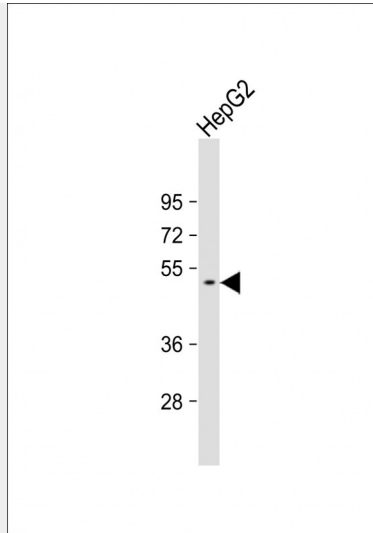
Provided below are standard protocols that you may find useful for product applications.

- [Western Blot](#)
- [Blocking Peptides](#)
- [Dot Blot](#)
- [Immunohistochemistry](#)
- [Immunofluorescence](#)
- [Immunoprecipitation](#)
- [Flow Cytometry](#)
- [Cell Culture](#)

### GTDC1 Antibody (Center) - Images



GTDC1 Antibody (Center) (Cat. #AP20381c) western blot analysis in Jurkat cell line lysates (35ug/lane). This demonstrates the GTDC1 antibody detected the GTDC1 protein (arrow).



Anti-GTDC1 Antibody (Center) at 1:1000 dilution + HepG2 whole cell lysate Lysates/proteins at 20  $\mu$ g per lane. Secondary Goat Anti-Rabbit IgG, (H+L), Peroxidase conjugated at 1/10000 dilution. Predicted band size : 53 kDa Blocking/Dilution buffer: 5% NFDM/TBST.

#### **GTDC1 Antibody (Center) - Background**

The function of GTDC1 (glycosyltransferase like domain containing 1) remains unknown.