

**LRP2BP Antibody (Center)**  
**Affinity Purified Rabbit Polyclonal Antibody (Pab)**  
**Catalog # AP20390c****Specification**

---

**LRP2BP Antibody (Center) - Product Information**

Application	WB,E
Primary Accession	<a href="#">O9P2M1</a>
Other Accession	<a href="#">Q4R3N2</a>
Reactivity	Human
Predicted	Monkey
Host	Rabbit
Clonality	Polyclonal
Isotype	Rabbit IgG
Calculated MW	39780
Antigen Region	126-152

**LRP2BP Antibody (Center) - Additional Information****Gene ID** 55805**Other Names**

LRP2-binding protein, Megalin-binding protein, MegBP, LRP2BP, KIAA1325

**Target/Specificity**

This LRP2BP antibody is generated from rabbits immunized with a KLH conjugated synthetic peptide between 126-152 amino acids from the Central region of human LRP2BP.

**Dilution**

WB~~1:1000

E~~Use at an assay dependent concentration.

**Format**

Purified polyclonal antibody supplied in PBS with 0.09% (W/V) sodium azide. This antibody is purified through a protein A column, followed by peptide affinity purification.

**Storage**

Maintain refrigerated at 2-8°C for up to 2 weeks. For long term storage store at -20°C in small aliquots to prevent freeze-thaw cycles.

**Precautions**

LRP2BP Antibody (Center) is for research use only and not for use in diagnostic or therapeutic procedures.

**LRP2BP Antibody (Center) - Protein Information****Name** LRP2BP

**Synonyms** KIAA1325

**Function** May act as an adapter that regulates LRP2 function.

**Cellular Location**

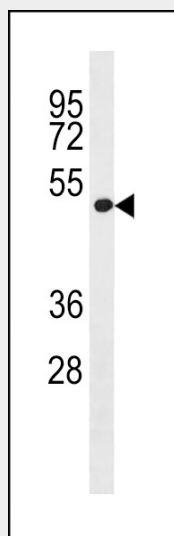
Cytoplasm. Note=Detected in a vesicular staining pattern close to the plasma membrane and throughout the cytoplasm

**LRP2BP Antibody (Center) - Protocols**

Provided below are standard protocols that you may find useful for product applications.

- [Western Blot](#)
- [Blocking Peptides](#)
- [Dot Blot](#)
- [Immunohistochemistry](#)
- [Immunofluorescence](#)
- [Immunoprecipitation](#)
- [Flow Cytometry](#)
- [Cell Culture](#)

**LRP2BP Antibody (Center) - Images**



LRP2BP Antibody (Center) (Cat. #AP20390c) western blot analysis in A549 cell line lysates (35ug/lane). This demonstrates the LRP2BP antibody detected the LRP2BP protein (arrow).

**LRP2BP Antibody (Center) - Background**

May act as an adapter that regulates LRP2 function.