

**LRRC61 Antibody (Center)**  
**Affinity Purified Rabbit Polyclonal Antibody (Pab)**  
**Catalog # AP20391c****Specification**

---

**LRRC61 Antibody (Center) - Product Information**

Application	WB,E
Primary Accession	<a href="#">Q9BV99</a>
Reactivity	Human
Host	Rabbit
Clonality	Polyclonal
Isotype	Rabbit IgG
Calculated MW	28014
Antigen Region	111-139

**LRRC61 Antibody (Center) - Additional Information****Gene ID** 65999**Other Names**

Leucine-rich repeat-containing protein 61, LRRC61

**Target/Specificity**

This LRRC61 antibody is generated from rabbits immunized with a KLH conjugated synthetic peptide between 111-139 amino acids from the Central region of human LRRC61.

**Dilution**

WB~~1:1000

E~~Use at an assay dependent concentration.

**Format**

Purified polyclonal antibody supplied in PBS with 0.09% (W/V) sodium azide. This antibody is purified through a protein A column, followed by peptide affinity purification.

**Storage**

Maintain refrigerated at 2-8°C for up to 2 weeks. For long term storage store at -20°C in small aliquots to prevent freeze-thaw cycles.

**Precautions**

LRRC61 Antibody (Center) is for research use only and not for use in diagnostic or therapeutic procedures.

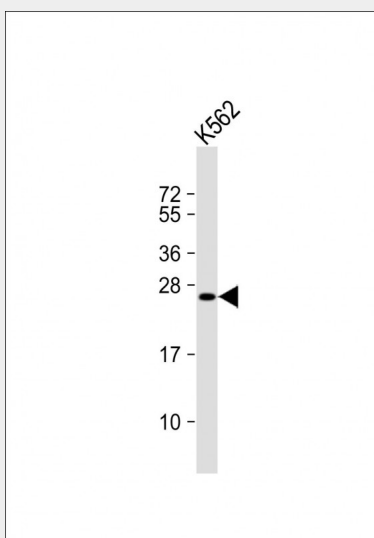
**LRRC61 Antibody (Center) - Protein Information****Name** LRRC61

## LRRC61 Antibody (Center) - Protocols

Provided below are standard protocols that you may find useful for product applications.

- [Western Blot](#)
- [Blocking Peptides](#)
- [Dot Blot](#)
- [Immunohistochemistry](#)
- [Immunofluorescence](#)
- [Immunoprecipitation](#)
- [Flow Cytometry](#)
- [Cell Culture](#)

## LRRC61 Antibody (Center) - Images



Anti-LRRC61 Antibody (Center) at 1:1000 dilution + K562 whole cell lysate Lysates/proteins at 20 µg per lane. Secondary Goat Anti-Rabbit IgG, (H+L), Peroxidase conjugated at 1/10000 dilution. Predicted band size : 28 kDa Blocking/Dilution buffer: 5% NFDm/TBST.

## LRRC61 Antibody (Center) - Background

LRRC61 contains two Leucine-rich repeat; these are short sequence motifs present in a number of proteins with diverse functions and cellular locations. These repeats are usually involved in protein-protein interactions. Each Leucine Rich Repeat is composed of a beta-alpha unit. These units form elongated non-globular structures. Leucine Rich Repeats are often flanked by cysteine rich domains.