

**CLEC19A Antibody (Center)**  
**Affinity Purified Rabbit Polyclonal Antibody (Pab)**  
**Catalog # AP20400c**

**Specification**

---

**CLEC19A Antibody (Center) - Product Information**

Application	WB,E
Primary Accession	<a href="#">Q6UXS0</a>
Reactivity	Human
Host	Rabbit
Clonality	Polyclonal
Isotype	Rabbit IgG
Calculated MW	21431
Antigen Region	54-80

**CLEC19A Antibody (Center) - Additional Information**

**Gene ID** 728276

**Other Names**

C-type lectin domain family 19 member A, CLEC19A

**Target/Specificity**

This CLEC19A antibody is generated from rabbits immunized with a KLH conjugated synthetic peptide between 54-80 amino acids from the Central region of human CLEC19A.

**Dilution**

WB~~1:1000

E~~Use at an assay dependent concentration.

**Format**

Purified polyclonal antibody supplied in PBS with 0.09% (W/V) sodium azide. This antibody is purified through a protein A column, followed by peptide affinity purification.

**Storage**

Maintain refrigerated at 2-8°C for up to 2 weeks. For long term storage store at -20°C in small aliquots to prevent freeze-thaw cycles.

**Precautions**

CLEC19A Antibody (Center) is for research use only and not for use in diagnostic or therapeutic procedures.

**CLEC19A Antibody (Center) - Protein Information**

**Name** CLEC19A ([HGNC:34522](#))

**Cellular Location**

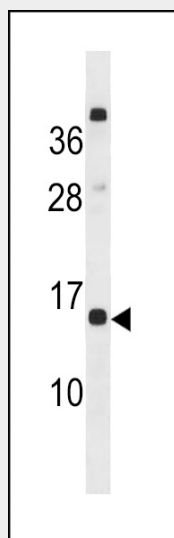
Secreted.

## CLEC19A Antibody (Center) - Protocols

Provided below are standard protocols that you may find useful for product applications.

- [Western Blot](#)
- [Blocking Peptides](#)
- [Dot Blot](#)
- [Immunohistochemistry](#)
- [Immunofluorescence](#)
- [Immunoprecipitation](#)
- [Flow Cytometry](#)
- [Cell Culture](#)

## CLEC19A Antibody (Center) - Images



CLEC19A Antibody (Center) (Cat. #AP20400c) western blot analysis in MCF-7 cell line lysates (35ug/lane). This demonstrates the CLEC19A antibody detected the CLEC19A protein (arrow).

## CLEC19A Antibody (Center) - Background

The function of this protein remains unknown.