

LMAN2L Antibody (C-term)
Affinity Purified Rabbit Polyclonal Antibody (Pab)
Catalog # AP20404b**Specification**

LMAN2L Antibody (C-term) - Product Information

| | |
|-------------------|------------------------|
| Application | WB,E |
| Primary Accession | O9H0V9 |
| Reactivity | Human |
| Host | Rabbit |
| Clonality | Polyclonal |
| Isotype | Rabbit IgG |
| Calculated MW | 39711 |
| Antigen Region | 322-348 |

LMAN2L Antibody (C-term) - Additional Information**Gene ID** 81562**Other Names**

VIP36-like protein, Lectin mannose-binding 2-like, LMAN2-like protein, LMAN2L, VIPL

Target/Specificity

This LMAN2L antibody is generated from rabbits immunized with a KLH conjugated synthetic peptide between 322-348 amino acids from the C-terminal region of human LMAN2L.

Dilution

WB~~1:1000

Format

Purified polyclonal antibody supplied in PBS with 0.09% (W/V) sodium azide. This antibody is purified through a protein A column, followed by peptide affinity purification.

Storage

Maintain refrigerated at 2-8°C for up to 2 weeks. For long term storage store at -20°C in small aliquots to prevent freeze-thaw cycles.

Precautions

LMAN2L Antibody (C-term) is for research use only and not for use in diagnostic or therapeutic procedures.

LMAN2L Antibody (C-term) - Protein Information**Name** LMAN2L**Synonyms** VIPL**Function** May be involved in the regulation of export from the endoplasmic reticulum of a subset

of glycoproteins. May function as a regulator of ERGIC-53.

Cellular Location

Endoplasmic reticulum membrane; Single-pass type I membrane protein. Golgi apparatus membrane; Single-pass type I membrane protein. Note=Predominantly found in the endoplasmic reticulum. Partly found in the Golgi

Tissue Location

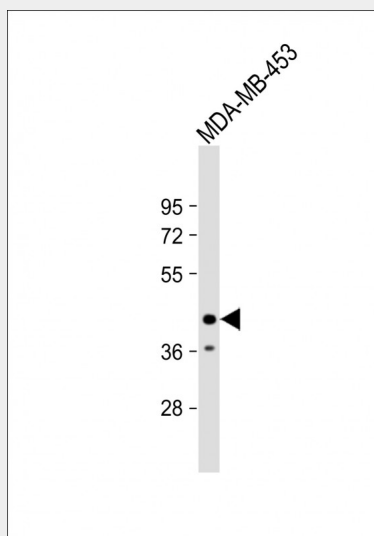
Expressed in numerous tissues. Highest expression in skeletal muscle and kidney, intermediate levels in heart, liver and placenta, low levels in brain, thymus, spleen, small intestine and lung.

LMAN2L Antibody (C-term) - Protocols

Provided below are standard protocols that you may find useful for product applications.

- [Western Blot](#)
- [Blocking Peptides](#)
- [Dot Blot](#)
- [Immunohistochemistry](#)
- [Immunofluorescence](#)
- [Immunoprecipitation](#)
- [Flow Cytometry](#)
- [Cell Culture](#)

LMAN2L Antibody (C-term) - Images



Anti-LMAN2L Antibody (C-term) at 1:1000 dilution + MDA-MB-453 whole cell lysate Lysates/proteins at 20 µg per lane. Secondary Goat Anti-Rabbit IgG, (H+L), Peroxidase conjugated at 1/10000 dilution. Predicted band size : 40 kDa Blocking/Dilution buffer: 5% NFDM/TBST.

LMAN2L Antibody (C-term) - Background

May be involved in the regulation of export from the endoplasmic reticulum of a subset of glycoproteins. May function as a regulator of ERGIC-53.