

**M CCNB1 Antibody (Center S123/S125)**  
**Affinity Purified Rabbit Polyclonal Antibody (Pab)**  
**Catalog # AP20408c****Specification**

---

**M CCNB1 Antibody (Center S123/S125) - Product Information**

Application	IHC-P, WB,E
Primary Accession	<a href="#">P24860</a>
Other Accession	<a href="#">Q08301</a>
Reactivity	Mouse
Predicted	Hamster
Host	Rabbit
Clonality	Polyclonal
Isotype	Rabbit IgG
Calculated MW	48052
Antigen Region	103-130

**M CCNB1 Antibody (Center S123/S125) - Additional Information****Gene ID** 268697**Other Names**

G2/mitotic-specific cyclin-B1, Ccnb1, Ccn-2, Ccnb1-rs13, Cycb, Cycb1

**Target/Specificity**

This Mouse CCNB1 antibody is generated from rabbits immunized with a KLH conjugated synthetic peptide between 103-130 amino acids from the Central region of mouse CCNB1.

**Dilution**

IHC-P~~1:25

WB~~1:1000

E~~Use at an assay dependent concentration.

**Format**

Purified polyclonal antibody supplied in PBS with 0.09% (W/V) sodium azide. This antibody is purified through a protein A column, followed by peptide affinity purification.

**Storage**

Maintain refrigerated at 2-8°C for up to 2 weeks. For long term storage store at -20°C in small aliquots to prevent freeze-thaw cycles.

**Precautions**

M CCNB1 Antibody (Center S123/S125) is for research use only and not for use in diagnostic or therapeutic procedures.

**M CCNB1 Antibody (Center S123/S125) - Protein Information****Name** Ccnb1

**Synonyms** Ccn-2, Ccnb1-rs13, Cycb, Cycb1

**Function** Essential for the control of the cell cycle at the G2/M (mitosis) transition.

**Cellular Location**

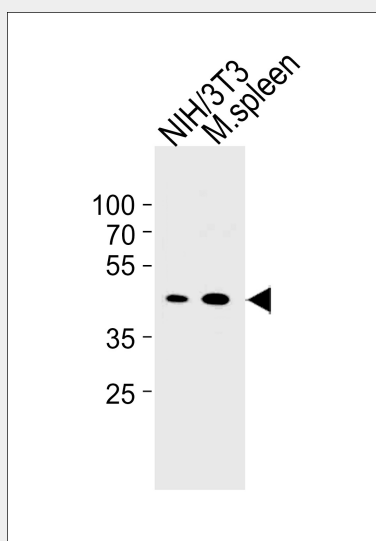
Cytoplasm. Nucleus. Cytoplasm, cytoskeleton, microtubule organizing center, centrosome

**M CCNB1 Antibody (Center S123/S125) - Protocols**

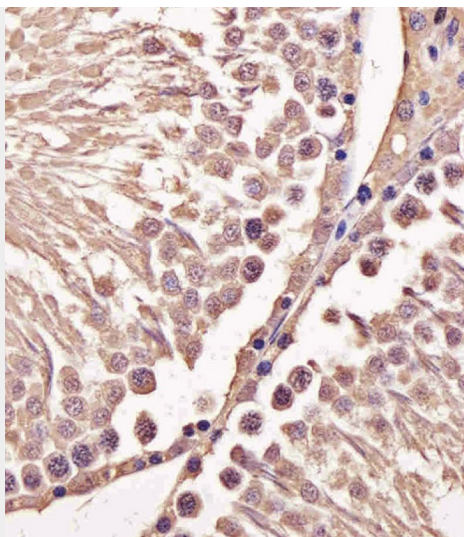
Provided below are standard protocols that you may find useful for product applications.

- [Western Blot](#)
- [Blocking Peptides](#)
- [Dot Blot](#)
- [Immunohistochemistry](#)
- [Immunofluorescence](#)
- [Immunoprecipitation](#)
- [Flow Cytometry](#)
- [Cell Culture](#)

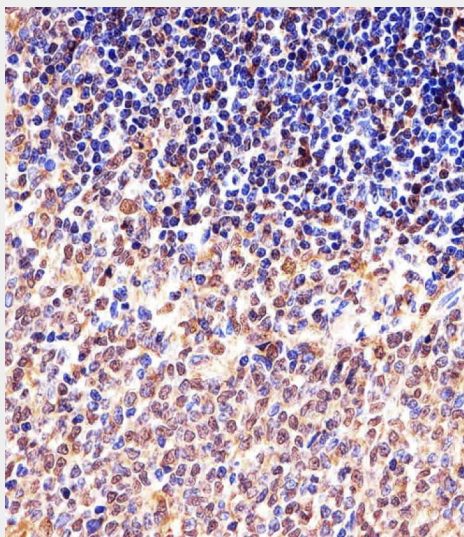
**M CCNB1 Antibody (Center S123/S125) - Images**



Mouse CCNB1 Antibody (Center S123/S125)(Cat. #AP20408c) western blot analysis in mouse NIH/3T3 cell line and mouse spleen tissue lysates (35ug/lane). This demonstrates the mouse CCNB1 antibody detected the mouse CCNB1 protein (arrow).



Immunohistochemical analysis of paraffin-embedded M. testis section using M CcNB1 Antibody (Center S123/S125)(Cat#AP20408c). AP20408c was diluted at 1:25 dilution. A undiluted biotinylated goat polyvalent antibody was used as the secondary, followed by DAB staining.



Immunohistochemical analysis of paraffin-embedded M. spleen section using M CcNB1 Antibody (Center S123/S125)(Cat#AP20408c). AP20408c was diluted at 1:25 dilution. A undiluted biotinylated goat polyvalent antibody was used as the secondary, followed by DAB staining.

#### **M CcNB1 Antibody (Center S123/S125) - Background**

Essential for the control of the cell cycle at the G2/M (mitosis) transition.