

CCNB3 Antibody (C-term S1331/S1333)
Affinity Purified Rabbit Polyclonal Antibody (Pab)
Catalog # AP20414b**Specification**

CCNB3 Antibody (C-term S1331/S1333) - Product Information

Application	WB,E
Primary Accession	Q8WWL7
Reactivity	Human
Host	Rabbit
Clonality	Polyclonal
Isotype	Rabbit IgG
Calculated MW	157916
Antigen Region	1311-1338

CCNB3 Antibody (C-term S1331/S1333) - Additional Information**Gene ID** 85417**Other Names**

G2/mitotic-specific cyclin-B3, CCNB3, CYCB3

Target/Specificity

This CCNB3 antibody is generated from rabbits immunized with a KLH conjugated synthetic peptide between 1311-1338 amino acids from the C-terminal region of human CCNB3.

Dilution

WB~~1:1000

E~~Use at an assay dependent concentration.

Format

Purified polyclonal antibody supplied in PBS with 0.09% (W/V) sodium azide. This antibody is purified through a protein A column, followed by peptide affinity purification.

Storage

Maintain refrigerated at 2-8°C for up to 2 weeks. For long term storage store at -20°C in small aliquots to prevent freeze-thaw cycles.

Precautions

CCNB3 Antibody (C-term S1331/S1333) is for research use only and not for use in diagnostic or therapeutic procedures.

CCNB3 Antibody (C-term S1331/S1333) - Protein Information**Name** CCNB3**Synonyms** CYCB3

Function Cyclins are positive regulatory subunits of the cyclin- dependent kinases (CDKs), and thereby play an essential role in the control of the cell cycle, notably via their destruction during cell division. Its tissue specificity suggest that it may be required during early meiotic prophase I.

Cellular Location

Nucleus.

Tissue Location

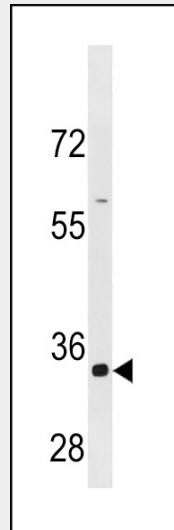
Testis specific. In testis, it is expressed in developing germ cells, but not in Leydig cells. Weakly or not expressed in other tissues.

CCNB3 Antibody (C-term S1331/S1333) - Protocols

Provided below are standard protocols that you may find useful for product applications.

- [Western Blot](#)
- [Blocking Peptides](#)
- [Dot Blot](#)
- [Immunohistochemistry](#)
- [Immunofluorescence](#)
- [Immunoprecipitation](#)
- [Flow Cytometry](#)
- [Cell Culture](#)

CCNB3 Antibody (C-term S1331/S1333) - Images



CCNB3 Antibody (C-term S1331/S1333) (Cat. #AP20414b) western blot analysis in HepG2 cell line lysates (35ug/lane). This demonstrates the CCNB3 antibody detected the CCNB3 protein (arrow).

CCNB3 Antibody (C-term S1331/S1333) - Background

Cyclins are positive regulatory subunits of the cyclin-dependent kinases (CDKs), and thereby play an essential role in the control of the cell cycle, notably via their destruction during cell division. Its tissue specificity suggest that it may be required during early meiotic prophase I.