

POMP Antibody (C-term)
Affinity Purified Rabbit Polyclonal Antibody (Pab)
Catalog # AP20420b

Specification

POMP Antibody (C-term) - Product Information

Application	WB,E
Primary Accession	O9Y244
Reactivity	Human, Mouse
Host	Rabbit
Clonality	Polyclonal
Isotype	Rabbit IgG
Calculated MW	15789
Antigen Region	105-131

POMP Antibody (C-term) - Additional Information

Gene ID 51371

Other Names

Proteasome maturation protein, Proteasemblin, Protein UMP1 homolog, hUMP1, Voltage-gated K channel beta subunit 41, POMP, C13orf12, UMP1

Target/Specificity

This POMP antibody is generated from rabbits immunized with a KLH conjugated synthetic peptide between 105-131 amino acids from the C-terminal region of human POMP.

Dilution

WB~~1:1000

E~~Use at an assay dependent concentration.

Format

Purified polyclonal antibody supplied in PBS with 0.09% (W/V) sodium azide. This antibody is purified through a protein A column, followed by peptide affinity purification.

Storage

Maintain refrigerated at 2-8°C for up to 2 weeks. For long term storage store at -20°C in small aliquots to prevent freeze-thaw cycles.

Precautions

POMP Antibody (C-term) is for research use only and not for use in diagnostic or therapeutic procedures.

POMP Antibody (C-term) - Protein Information

Name POMP ([HGNC:20330](#))

Function Molecular chaperone essential for the assembly of standard proteasomes and

immunoproteasomes. Degraded after completion of proteasome maturation. Mediates the association of 20S preproteasome with the endoplasmic reticulum.

Cellular Location

Cytoplasm, cytosol. Nucleus. Microsome membrane.

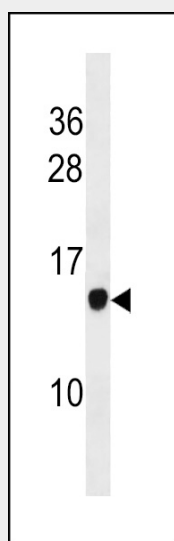
Tissue Location

Strongly expressed from the basal layer to the granular layer of healthy epidermis, whereas in KLiCK patients there is a gradual decrease of expression toward the granular layer

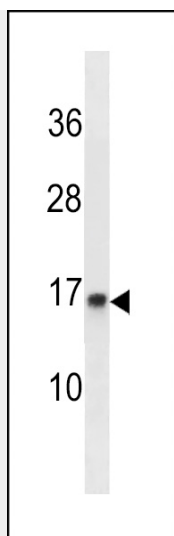
POMP Antibody (C-term) - Protocols

Provided below are standard protocols that you may find useful for product applications.

- [Western Blot](#)
- [Blocking Peptides](#)
- [Dot Blot](#)
- [Immunohistochemistry](#)
- [Immunofluorescence](#)
- [Immunoprecipitation](#)
- [Flow Cytometry](#)
- [Cell Culture](#)

POMP Antibody (C-term) - Images

POMP Antibody (C-term) (Cat. #AP20420b) western blot analysis in mouse stomach tissue lysates (35ug/lane). This demonstrates the POMP antibody detected the POMP protein (arrow).



POMP Antibody (C-term) (Cat. #AP20420b) western blot analysis in WiDr cell line lysates (35ug/lane). This demonstrates the POMP antibody detected the POMP protein (arrow).

POMP Antibody (C-term) - Background

Molecular chaperone essential for the assembly of standard proteasomes and immunoproteasomes. Degraded after completion of proteasome maturation. Mediates the association of 20S preproteasome with the endoplasmic reticulum.