

MOUSE Bcar1 Antibody (Center)
Affinity Purified Rabbit Polyclonal Antibody (Pab)
Catalog # AP20421c

Specification

MOUSE Bcar1 Antibody (Center) - Product Information

Application	WB,E
Primary Accession	Q61140
Other Accession	Q63767
Reactivity	Mouse
Predicted	Rat
Host	Rabbit
Clonality	Polyclonal
Isotype	Rabbit IgG
Calculated MW	94285
Antigen Region	322-348

MOUSE Bcar1 Antibody (Center) - Additional Information

Gene ID 12927

Other Names

Breast cancer anti-estrogen resistance protein 1, CRK-associated substrate, p130cas, Bcar1, Cas, Crkas

Target/Specificity

This MOUSE Bcar1 antibody is generated from rabbits immunized with a KLH conjugated synthetic peptide between 322-348 amino acids from the Central region of mouse Bcar1.

Dilution

WB~~1:1000

E~~Use at an assay dependent concentration.

Format

Purified polyclonal antibody supplied in PBS with 0.09% (W/V) sodium azide. This antibody is purified through a protein A column, followed by peptide affinity purification.

Storage

Maintain refrigerated at 2-8°C for up to 2 weeks. For long term storage store at -20°C in small aliquots to prevent freeze-thaw cycles.

Precautions

MOUSE Bcar1 Antibody (Center) is for research use only and not for use in diagnostic or therapeutic procedures.

MOUSE Bcar1 Antibody (Center) - Protein Information

Name Bcar1

Synonyms Cas, Crkas

Function Docking protein which plays a central coordinating role for tyrosine kinase-based signaling related to cell adhesion (By similarity). Implicated in induction of cell migration and cell branching (PubMed:[25499443](#)). Involved in the BCAR3-mediated inhibition of TGFB signaling (PubMed:[25499443](#)).

Cellular Location

Cell junction, focal adhesion. Cytoplasm Cell projection, axon Note=Unphosphorylated form localizes in the cytoplasm (PubMed:22801373). Localizes to focal adhesion sites following integrin engagement (PubMed:22801373).

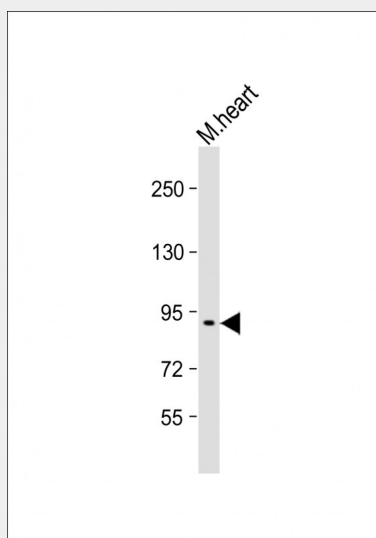
Tissue Location

Expressed in olfactory sensory neurons (at protein level) (PubMed:20881139). Expressed abundantly in the liver, lung, brain, and at lower levels in the heart (at protein level) (PubMed:19365570).

MOUSE Bcar1 Antibody (Center) - Protocols

Provided below are standard protocols that you may find useful for product applications.

- [Western Blot](#)
- [Blocking Peptides](#)
- [Dot Blot](#)
- [Immunohistochemistry](#)
- [Immunofluorescence](#)
- [Immunoprecipitation](#)
- [Flow Cytometry](#)
- [Cell Culture](#)

MOUSE Bcar1 Antibody (Center) - Images

Anti-Mouse Bcar1 Antibody (Center) at 1:1000 dilution + mouse heart lysate Lysates/proteins at 20 µg per lane. Secondary Goat Anti-Rabbit IgG, (H+L), Peroxidase conjugated at 1/10000 dilution. Predicted band size : 94kDa Blocking/Dilution buffer: 5% NFDm/TBST.

MOUSE Bcar1 Antibody (Center) - Background

Docking protein which plays a central coordinating role for tyrosine kinase-based signaling related to cell adhesion. Implicated in induction of cell migration (By similarity). Has been shown to be essential in cardiovascular development during embryogenesis.