

TCF7L1 Antibody (N-term)
Affinity Purified Rabbit Polyclonal Antibody (Pab)
Catalog # AP20423a**Specification**

TCF7L1 Antibody (N-term) - Product Information

Application	WB,E
Primary Accession	O9HCS4
Reactivity	Human
Host	Rabbit
Clonality	Polyclonal
Isotype	Rabbit IgG
Calculated MW	62631
Antigen Region	70-98

TCF7L1 Antibody (N-term) - Additional Information**Gene ID** 83439**Other Names**

Transcription factor 7-like 1, HMG box transcription factor 3, TCF-3, TCF7L1, TCF3

Target/Specificity

This TCF7L1 antibody is generated from rabbits immunized with a KLH conjugated synthetic peptide between 70-98 amino acids from the N-terminal region of human TCF7L1.

Dilution

WB~~1:1000

E~~Use at an assay dependent concentration.

Format

Purified polyclonal antibody supplied in PBS with 0.09% (W/V) sodium azide. This antibody is purified through a protein A column, followed by peptide affinity purification.

Storage

Maintain refrigerated at 2-8°C for up to 2 weeks. For long term storage store at -20°C in small aliquots to prevent freeze-thaw cycles.

Precautions

TCF7L1 Antibody (N-term) is for research use only and not for use in diagnostic or therapeutic procedures.

TCF7L1 Antibody (N-term) - Protein Information**Name** TCF7L1**Synonyms** TCF3

Function Participates in the Wnt signaling pathway. Binds to DNA and acts as a repressor in the absence of CTNNB1, and as an activator in its presence. Necessary for the terminal differentiation of epidermal cells, the formation of keratohyalin granules and the development of the barrier function of the epidermis (By similarity). Down-regulates NQO1, leading to increased mitomycin c resistance.

Cellular Location

Nucleus.

Tissue Location

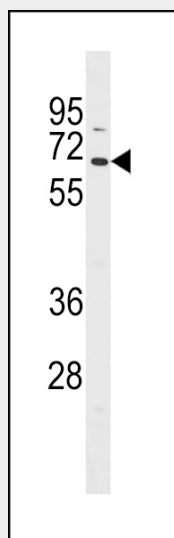
Detected in hair follicles and skin keratinocytes, and at lower levels in stomach epithelium

TCF7L1 Antibody (N-term) - Protocols

Provided below are standard protocols that you may find useful for product applications.

- [Western Blot](#)
- [Blocking Peptides](#)
- [Dot Blot](#)
- [Immunohistochemistry](#)
- [Immunofluorescence](#)
- [Immunoprecipitation](#)
- [Flow Cytometry](#)
- [Cell Culture](#)

TCF7L1 Antibody (N-term) - Images



TCF7L1 Antibody (N-term) (Cat. #AP20423a) western blot analysis in HepG2 cell line lysates (35ug/lane). This demonstrates the TCF7L1 antibody detected the TCF7L1 protein (arrow).

TCF7L1 Antibody (N-term) - Background

Participates in the Wnt signaling pathway. Binds to DNA and acts as a repressor in the absence of CTNNB1, and as an activator in its presence. Necessary for the terminal differentiation of epidermal cells, the formation of keratohyalin granules and the development of the barrier function of the epidermis (By similarity). Down-regulates NQO1, leading to increased mitomycin c resistance.