

SYN1 Antibody (C-term)
Affinity Purified Rabbit Polyclonal Antibody (Pab)
Catalog # AP20425b

Specification

SYN1 Antibody (C-term) - Product Information

| | |
|-------------------|--|
| Application | WB,E |
| Primary Accession | P17600 |
| Other Accession | P09951 , O88935 , P17599 |
| Reactivity | Human |
| Predicted | Bovine, Mouse, Rat |
| Host | Rabbit |
| Clonality | Polyclonal |
| Isotype | Rabbit IgG |
| Calculated MW | 74111 |
| Antigen Region | 668-697 |

SYN1 Antibody (C-term) - Additional Information

Gene ID 6853

Other Names

Synapsin-1, Brain protein 41, Synapsin I, SYN1

Target/Specificity

This SYN1 antibody is generated from rabbits immunized with a KLH conjugated synthetic peptide between 668-697 amino acids from the C-terminal region of human SYN1.

Dilution

WB~~1:1000

E~~Use at an assay dependent concentration.

Format

Purified polyclonal antibody supplied in PBS with 0.09% (W/V) sodium azide. This antibody is purified through a protein A column, followed by peptide affinity purification.

Storage

Maintain refrigerated at 2-8°C for up to 2 weeks. For long term storage store at -20°C in small aliquots to prevent freeze-thaw cycles.

Precautions

SYN1 Antibody (C-term) is for research use only and not for use in diagnostic or therapeutic procedures.

SYN1 Antibody (C-term) - Protein Information

Name SYN1

Function Neuronal phosphoprotein that coats synaptic vesicles, and binds to the cytoskeleton. Acts as a regulator of synaptic vesicles trafficking, involved in the control of neurotransmitter release at the pre-synaptic terminal (PubMed:[21441247](#), PubMed:[23406870](#)). Also involved in the regulation of axon outgrowth and synaptogenesis (By similarity). The complex formed with NOS1 and CAPON proteins is necessary for specific nitric-oxid functions at a presynaptic level (By similarity).

Cellular Location

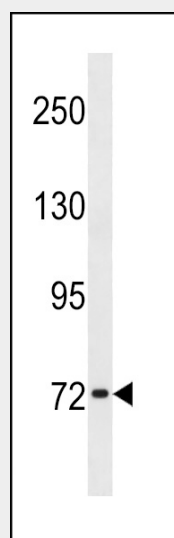
Synapse {ECO:0000250|UniProtKB:O88935}. Golgi apparatus {ECO:0000250|UniProtKB:O88935}. Presynapse. Cytoplasmic vesicle, secretory vesicle, synaptic vesicle {ECO:0000250|UniProtKB:P09951}. Note=Dissociates from synaptic vesicles and redistributes into the axon during action potential firing, in a step that precedes fusion of vesicles with the plasma membrane. Reclusters to presynapses after the cessation of synaptic activity. {ECO:0000250|UniProtKB:P09951}

SYN1 Antibody (C-term) - Protocols

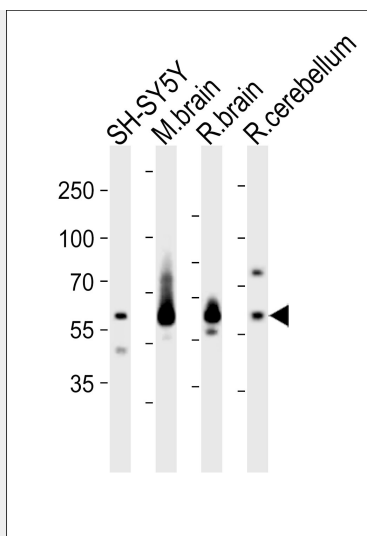
Provided below are standard protocols that you may find useful for product applications.

- [Western Blot](#)
- [Blocking Peptides](#)
- [Dot Blot](#)
- [Immunohistochemistry](#)
- [Immunofluorescence](#)
- [Immunoprecipitation](#)
- [Flow Cytometry](#)
- [Cell Culture](#)

SYN1 Antibody (C-term) - Images



SYN1 Antibody (C-term) (Cat. #AP20425b) western blot analysis in HL-60 cell line lysates (35ug/lane). This demonstrates the SYN1 antibody detected the SYN1 protein (arrow).



Western blot analysis of lysates from SH-SY5Y cell line, mouse brain, rat brain, rat cerebellum tissue (from left to right), using SYN1 Antibody (C-term)(Cat. #AP20425b). AP20425b was diluted at 1:1000 at each lane. A goat anti-rabbit IgG H&L(HRP) at 1:10000 dilution was used as the secondary antibody. Lysates at 20ug per lane.

SYN1 Antibody (C-term) - Background

Neuronal phosphoprotein that coats synaptic vesicles, binds to the cytoskeleton, and is believed to function in the regulation of neurotransmitter release. The complex formed with NOS1 and CAPON proteins is necessary for specific nitric-oxid functions at a presynaptic level.