

LILRA3 Antibody (C-term)
Affinity Purified Rabbit Polyclonal Antibody (Pab)
Catalog # AP20443b**Specification**

LILRA3 Antibody (C-term) - Product Information

Application	WB,E
Primary Accession	Q8N6C8
Reactivity	Human
Host	Rabbit
Clonality	Polyclonal
Isotype	Rabbit IgG
Calculated MW	47472
Antigen Region	350-378

LILRA3 Antibody (C-term) - Additional Information**Gene ID** 11026**Other Names**

Leukocyte immunoglobulin-like receptor subfamily A member 3, CD85 antigen-like family member E, Immunoglobulin-like transcript 6, ILT-6, Leukocyte immunoglobulin-like receptor 4, LIR-4, Monocyte inhibitory receptor HM43/HM31, CD85e, LILRA3, ILT6, LIR4

Target/Specificity

This LILRA3 antibody is generated from rabbits immunized with a KLH conjugated synthetic peptide between 350-378 amino acids from the C-terminal region of human LILRA3.

Dilution

WB~~1:1000

E~~Use at an assay dependent concentration.

Format

Purified polyclonal antibody supplied in PBS with 0.09% (W/V) sodium azide. This antibody is purified through a protein A column, followed by peptide affinity purification.

Storage

Maintain refrigerated at 2-8°C for up to 2 weeks. For long term storage store at -20°C in small aliquots to prevent freeze-thaw cycles.

Precautions

LILRA3 Antibody (C-term) is for research use only and not for use in diagnostic or therapeutic procedures.

LILRA3 Antibody (C-term) - Protein Information**Name** LILRA3

Synonyms ILT6, LIR4

Function Acts as a soluble receptor for class I MHC antigens. Binds both classical and non-classical HLA class I molecules but with reduced affinities compared to LILRB1 or LILRB2. Binds with high affinity to the surface of monocytes, leading to abolish LPS-induced TNF-alpha production by monocytes.

Cellular Location

Secreted.

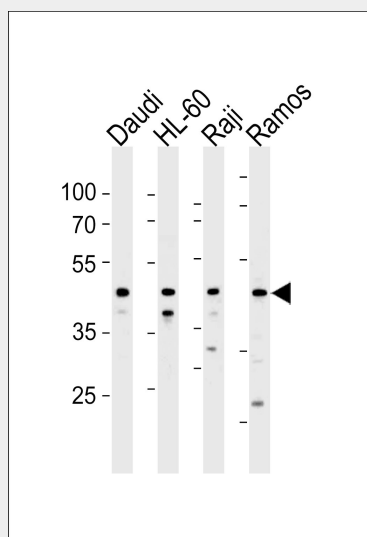
Tissue Location

Detected in B-cells, and at lower levels in natural killer (NK) cells. Detected in peripheral blood monocytes and lung

LILRA3 Antibody (C-term) - Protocols

Provided below are standard protocols that you may find useful for product applications.

- [Western Blot](#)
- [Blocking Peptides](#)
- [Dot Blot](#)
- [Immunohistochemistry](#)
- [Immunofluorescence](#)
- [Immunoprecipitation](#)
- [Flow Cytometry](#)
- [Cell Culture](#)

LILRA3 Antibody (C-term) - Images

LILRA3 Antibody (C-term) (Cat. #AP20443b) western blot analysis in Daudi,HL-60,Raji and Ramos cell line lysates (35ug/lane).This demonstrates the LILRA3 antibody detected the LILRA3 protein (arrow).

LILRA3 Antibody (C-term) - Background

May act as soluble receptor for class I MHC antigens.

LILRA3 Antibody (C-term) - References

Zhang Z., et al. Protein Sci. 13:2819-2824(2004).
Arm J.P., et al. J. Immunol. 159:2342-2349(1997).
Borges L., et al. J. Immunol. 159:5192-5196(1997).
Norman P.J., et al. Immunogenetics 55:165-171(2003).