

FAM159A Antibody (Center)
Affinity Purified Rabbit Polyclonal Antibody (Pab)
Catalog # AP20445c**Specification**

FAM159A Antibody (Center) - Product Information

Application	IF, WB,E
Primary Accession	Q6UWV7
Reactivity	Human, Mouse
Host	Rabbit
Clonality	Polyclonal
Isotype	Rabbit IgG
Calculated MW	20306
Antigen Region	89-115

FAM159A Antibody (Center) - Additional Information**Gene ID** 348378**Other Names**

Membrane protein FAM159A, FAM159A

Target/Specificity

This FAM159A antibody is generated from rabbits immunized with a KLH conjugated synthetic peptide between 89-115 amino acids from the Central region of human FAM159A.

Dilution

IF~~1:25

WB~~1:1000

E~~Use at an assay dependent concentration.

Format

Purified polyclonal antibody supplied in PBS with 0.09% (W/V) sodium azide. This antibody is purified through a protein A column, followed by peptide affinity purification.

Storage

Maintain refrigerated at 2-8°C for up to 2 weeks. For long term storage store at -20°C in small aliquots to prevent freeze-thaw cycles.

Precautions

FAM159A Antibody (Center) is for research use only and not for use in diagnostic or therapeutic procedures.

FAM159A Antibody (Center) - Protein Information**Name** SHISAL2A ([HGNC:28757](#))**Synonyms** FAM159A

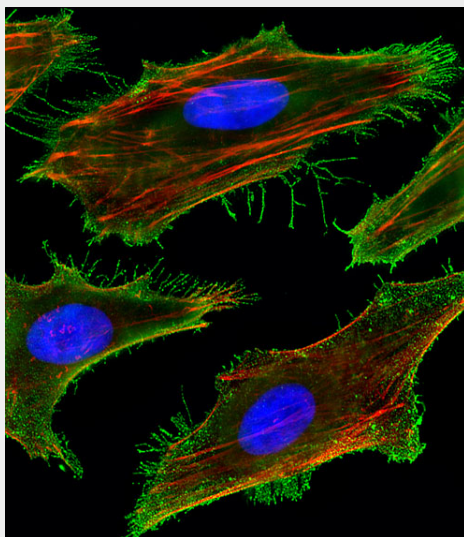
Cellular Location

Membrane; Multi-pass membrane protein

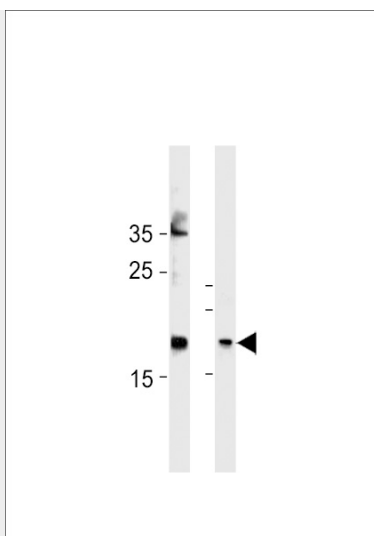
FAM159A Antibody (Center) - Protocols

Provided below are standard protocols that you may find useful for product applications.

- [Western Blot](#)
- [Blocking Peptides](#)
- [Dot Blot](#)
- [Immunohistochemistry](#)
- [Immunofluorescence](#)
- [Immunoprecipitation](#)
- [Flow Cytometry](#)
- [Cell Culture](#)

FAM159A Antibody (Center) - Images

Fluorescent image of HeLa cells stained with FAM159A Antibody (Center)(Cat#AP20445c). AP20445c was diluted at 1:25 dilution. An Alexa Fluor 488-conjugated goat anti-rabbit IgG at 1:400 dilution was used as the secondary antibody (green). DAPI was used to stain the cell nuclear (blue) . Cytoplasmic actin was counterstained with Alexa Fluor® 555 conjugated with Phalloidin (red).



FAM159A Antibody (Center) (Cat. #AP20445c) western blot analysis in HeLa cell line and mouse bladder tissue lysates (35ug/lane). This demonstrates the FAM159A antibody detected the FAM159A protein (arrow).

FAM159A Antibody (Center) - Background

The exact function of this protein remains unknown.

FAM159A Antibody (Center) - References

Clark H.F., et al. Genome Res. 13:2265-2270(2003).
Ota T., et al. Nat. Genet. 36:40-45(2004).
Mural R.J., et al. Submitted (SEP-2005) to the EMBL/GenBank/DDBJ databases.
Gregory S.G., et al. Nature 441:315-321(2006).