

PTGER4 Antibody (Center)
Affinity Purified Rabbit Polyclonal Antibody (Pab)
Catalog # AP20451c

Specification

PTGER4 Antibody (Center) - Product Information

Application	IHC-P, WB,E
Primary Accession	P35408
Other Accession	P43114 , Q28691 , P32240 , Q8MJ08
Reactivity	Human, Mouse
Predicted	Bovine, Rabbit, Rat
Host	Rabbit
Clonality	Polyclonal
Isotype	Rabbit IgG
Antigen Region	242-269

PTGER4 Antibody (Center) - Additional Information

Gene ID 5734

Other Names

Prostaglandin E2 receptor EP4 subtype, PGE receptor EP4 subtype, PGE2 receptor EP4 subtype, Prostanoid EP4 receptor, PTGER4, PTGER2

Target/Specificity

This PTGER4 antibody is generated from rabbits immunized with a KLH conjugated synthetic peptide between 242-269 amino acids from the Central region of human PTGER4.

Dilution

IHC-P~~1:25

WB~~1:1000

E~~Use at an assay dependent concentration.

Format

Purified polyclonal antibody supplied in PBS with 0.09% (W/V) sodium azide. This antibody is purified through a protein A column, followed by peptide affinity purification.

Storage

Maintain refrigerated at 2-8°C for up to 2 weeks. For long term storage store at -20°C in small aliquots to prevent freeze-thaw cycles.

Precautions

PTGER4 Antibody (Center) is for research use only and not for use in diagnostic or therapeutic procedures.

PTGER4 Antibody (Center) - Protein Information

Name PTGER4

Synonyms PTGER2

Function Receptor for prostaglandin E2 (PGE2). The activity of this receptor is mediated by G(s) proteins that stimulate adenylate cyclase. Has a relaxing effect on smooth muscle. May play an important role in regulating renal hemodynamics, intestinal epithelial transport, adrenal aldosterone secretion, and uterine function.

Cellular Location

Cell membrane; Multi-pass membrane protein.

Tissue Location

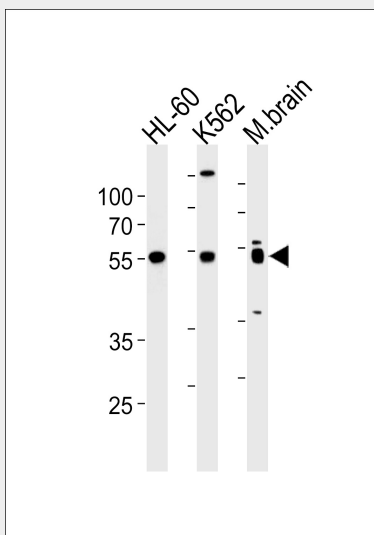
High in intestine and in peripheral blood mononuclear cells; low in lung, kidney, thymus, uterus, vasculature and brain. Not found in liver, heart, retina or skeletal muscle

PTGER4 Antibody (Center) - Protocols

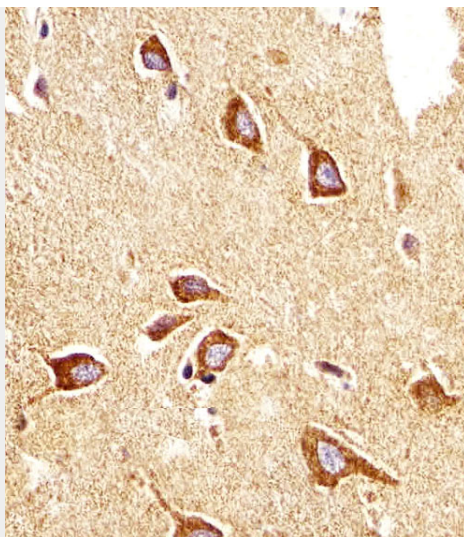
Provided below are standard protocols that you may find useful for product applications.

- [Western Blot](#)
- [Blocking Peptides](#)
- [Dot Blot](#)
- [Immunohistochemistry](#)
- [Immunofluorescence](#)
- [Immunoprecipitation](#)
- [Flow Cytometry](#)
- [Cell Culture](#)

PTGER4 Antibody (Center) - Images



PTGER4 Antibody (Center) (Cat. #AP20451c) western blot analysis in HL-60, K562 cell line and mouse brain lysates (35ug/lane). This demonstrates the PTGER4 antibody detected the PTGER4 protein (arrow).



Immunohistochemical analysis of paraffin-embedded H. brain section using PTGER4 Antibody (Center)(Cat#AP20451c). AP20451c was diluted at 1:25 dilution. A undiluted biotinylated goat polyvalent antibody was used as the secondary, followed by DAB staining.

PTGER4 Antibody (Center) - Background

Receptor for prostaglandin E2 (PGE2). The activity of this receptor is mediated by G(s) proteins that stimulate adenylate cyclase. Has a relaxing effect on smooth muscle. May play an important role in regulating renal hemodynamics, intestinal epithelial transport, adrenal aldosterone secretion, and uterine function.

PTGER4 Antibody (Center) - References

Bastien L., et al. J. Biol. Chem. 269:11873-11877(1994).
An S., et al. Biochem. Biophys. Res. Commun. 197:263-270(1993).
Foord S.M., et al. Genomics 35:182-188(1996).
Mori K., et al. J. Mol. Med. 74:333-336(1996).
Kopatz S.A., et al. Submitted (OCT-2003) to the EMBL/GenBank/DDBJ databases.