

**CNO Antibody (Center)**  
**Affinity Purified Rabbit Polyclonal Antibody (Pab)**  
**Catalog # AP20464c**

**Specification**

---

**CNO Antibody (Center) - Product Information**

Application	WB,E
Primary Accession	<a href="#">Q9NUP1</a>
Reactivity	Human
Host	Rabbit
Clonality	Polyclonal
Isotype	Rabbit IgG
Calculated MW	23351
Antigen Region	114-143

**CNO Antibody (Center) - Additional Information**

**Gene ID** 55330

**Other Names**

Biogenesis of lysosome-related organelles complex 1 subunit 4, BLOC-1 subunit 4, Protein cappuccino homolog, BLOC1S4, CNO

**Target/Specificity**

This CNO antibody is generated from rabbits immunized with a KLH conjugated synthetic peptide between 114-143 amino acids from the Central region of human CNO.

**Dilution**

WB~~1:1000

E~~Use at an assay dependent concentration.

**Format**

Purified polyclonal antibody supplied in PBS with 0.09% (W/V) sodium azide. This antibody is purified through a protein A column, followed by peptide affinity purification.

**Storage**

Maintain refrigerated at 2-8°C for up to 2 weeks. For long term storage store at -20°C in small aliquots to prevent freeze-thaw cycles.

**Precautions**

CNO Antibody (Center) is for research use only and not for use in diagnostic or therapeutic procedures.

**CNO Antibody (Center) - Protein Information**

**Name** BLOC1S4

**Synonyms** CNO

**Function** Component of the BLOC-1 complex, a complex that is required for normal biogenesis of lysosome-related organelles (LRO), such as platelet dense granules and melanosomes. In concert with the AP-3 complex, the BLOC-1 complex is required to target membrane protein cargos into vesicles assembled at cell bodies for delivery into neurites and nerve terminals. The BLOC-1 complex, in association with SNARE proteins, is also proposed to be involved in neurite extension. Plays a role in intracellular vesicle trafficking.

#### **Cellular Location**

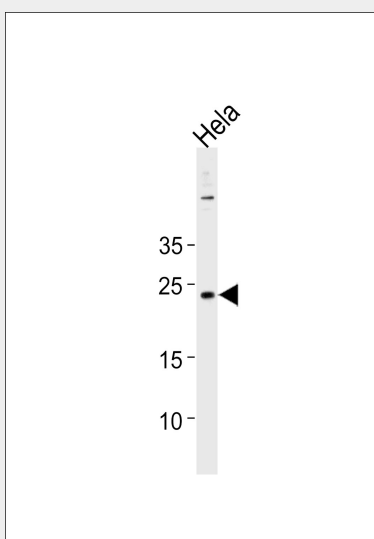
Cytoplasm.

### **CNO Antibody (Center) - Protocols**

Provided below are standard protocols that you may find useful for product applications.

- [Western Blot](#)
- [Blocking Peptides](#)
- [Dot Blot](#)
- [Immunohistochemistry](#)
- [Immunofluorescence](#)
- [Immunoprecipitation](#)
- [Flow Cytometry](#)
- [Cell Culture](#)

### **CNO Antibody (Center) - Images**



CNO Antibody (Center) (Cat. #AP20464c) western blot analysis in HeLa cell line lysates (35ug/lane). This demonstrates the CNO antibody detected the CNO protein (arrow).

### **CNO Antibody (Center) - Background**

The BLOC-1 complex is required for normal biogenesis of lysosome-related organelles, such as platelet dense granules and melanosomes. Plays a role in intracellular vesicle trafficking (By similarity).

### **CNO Antibody (Center) - References**

Ota T., et al. Nat. Genet. 36:40-45(2004).

Hillier L.W., et al. Nature 434:724-731(2005).