

**R Ccnl2 Antibody (C-term)**  
**Affinity Purified Rabbit Polyclonal Antibody (Pab)**  
**Catalog # AP20475b****Specification**

---

**R Ccnl2 Antibody (C-term) - Product Information**

Application	WB,E
Primary Accession	<a href="#">Q510H5</a>
Other Accession	<a href="#">Q9JJA7</a>
Reactivity	Rat
Predicted	Mouse
Host	Rabbit
Clonality	Polyclonal
Isotype	Rabbit IgG
Calculated MW	58246
Antigen Region	422-450

**R Ccnl2 Antibody (C-term) - Additional Information****Gene ID** 298686**Other Names**

Cyclin-L2, Ccnl2

**Target/Specificity**

This RAT Ccnl2 antibody is generated from rabbits immunized with a KLH conjugated synthetic peptide between 422-450 amino acids from the C-terminal region of rat Ccnl2.

**Dilution**

WB~~1:1000

E~~Use at an assay dependent concentration.

**Format**

Purified polyclonal antibody supplied in PBS with 0.09% (W/V) sodium azide. This antibody is purified through a protein A column, followed by peptide affinity purification.

**Storage**

Maintain refrigerated at 2-8°C for up to 2 weeks. For long term storage store at -20°C in small aliquots to prevent freeze-thaw cycles.

**Precautions**

R Ccnl2 Antibody (C-term) is for research use only and not for use in diagnostic or therapeutic procedures.

**R Ccnl2 Antibody (C-term) - Protein Information****Name** Ccnl2

**Function** Involved in pre-mRNA splicing. May induce cell death, possibly by acting on the transcription and RNA processing of apoptosis-related factors.

**Cellular Location**

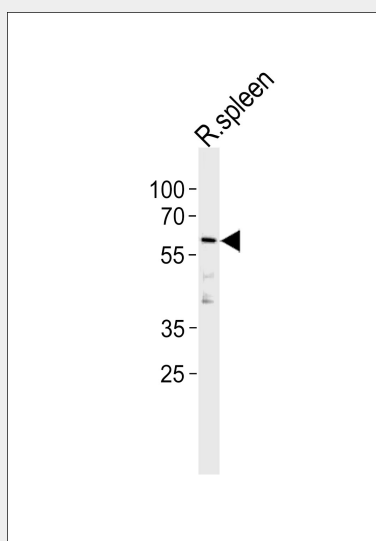
Nucleus speckle {ECO:0000250|UniProtKB:Q96S94}. Nucleus, nucleoplasm {ECO:0000250|UniProtKB:Q96S94}

**R Ccnl2 Antibody (C-term) - Protocols**

Provided below are standard protocols that you may find useful for product applications.

- [Western Blot](#)
- [Blocking Peptides](#)
- [Dot Blot](#)
- [Immunohistochemistry](#)
- [Immunofluorescence](#)
- [Immunoprecipitation](#)
- [Flow Cytometry](#)
- [Cell Culture](#)

**R Ccnl2 Antibody (C-term) - Images**



Rat Ccnl2 Antibody (C-term) (Cat. #AP20475b) western blot analysis in rat spleen tissue lysates (35ug/lane). This demonstrates the Rat Ccnl2 antibody detected the Rat Ccnl2 protein (arrow).

**R Ccnl2 Antibody (C-term) - Background**

Transcriptional regulator which participates in regulating the pre-mRNA splicing process. Also modulates the expression of critical apoptotic factor, leading to cell apoptosis (By similarity).

**R Ccnl2 Antibody (C-term) - References**

Gibbs R.A., et al. Nature 428:493-521(2004).