

**NDUFB10 Antibody (Center)**  
**Affinity Purified Rabbit Polyclonal Antibody (Pab)**  
**Catalog # AP20477c****Specification**

---

**NDUFB10 Antibody (Center) - Product Information**

Application	WB,E
Primary Accession	<a href="#">O96000</a>
Other Accession	<a href="#">O9DCS9</a>
Reactivity	Human
Predicted	Mouse
Host	Rabbit
Clonality	Polyclonal
Isotype	Rabbit IgG
Calculated MW	20777
Antigen Region	43-70

**NDUFB10 Antibody (Center) - Additional Information****Gene ID** 4716**Other Names**

NADH dehydrogenase [ubiquinone] 1 beta subcomplex subunit 10, Complex I-PDSW, CI-PDSW, NADH-ubiquinone oxidoreductase PDSW subunit, NDUFB10

**Target/Specificity**

This NDUFB10 antibody is generated from rabbits immunized with a KLH conjugated synthetic peptide between 43-70 amino acids from the Central region of human NDUFB10.

**Dilution**

WB~~1:1000

E~~Use at an assay dependent concentration.

**Format**

Purified polyclonal antibody supplied in PBS with 0.09% (W/V) sodium azide. This antibody is purified through a protein A column, followed by peptide affinity purification.

**Storage**

Maintain refrigerated at 2-8°C for up to 2 weeks. For long term storage store at -20°C in small aliquots to prevent freeze-thaw cycles.

**Precautions**

NDUFB10 Antibody (Center) is for research use only and not for use in diagnostic or therapeutic procedures.

**NDUFB10 Antibody (Center) - Protein Information****Name** NDUFB10

**Function** Accessory subunit that is involved in the functional assembly of the mitochondrial respiratory chain complex I. Complex I has an NADH dehydrogenase activity with ubiquinone as an immediate electron acceptor and mediates the transfer of electrons from NADH to the respiratory chain.

**Cellular Location**

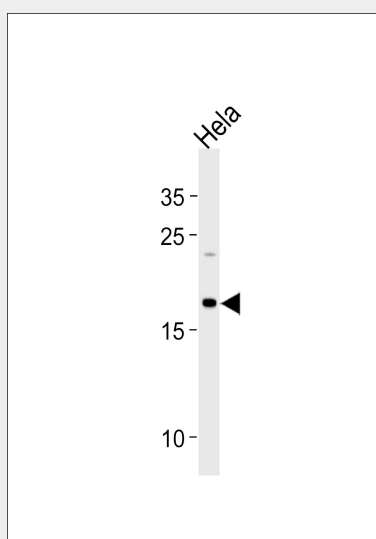
Mitochondrion inner membrane; Peripheral membrane protein; Matrix side

**NDUFB10 Antibody (Center) - Protocols**

Provided below are standard protocols that you may find useful for product applications.

- [Western Blot](#)
- [Blocking Peptides](#)
- [Dot Blot](#)
- [Immunohistochemistry](#)
- [Immunofluorescence](#)
- [Immunoprecipitation](#)
- [Flow Cytometry](#)
- [Cell Culture](#)

**NDUFB10 Antibody (Center) - Images**



NDUFB10 Antibody (Center) (Cat. #AP20477c) western blot analysis in HeLa cell line lysates (35ug/lane). This demonstrates the NDUFB10 antibody detected the NDUFB10 protein (arrow).

**NDUFB10 Antibody (Center) - Background**

Accessory subunit of the mitochondrial membrane respiratory chain NADH dehydrogenase (Complex I), that is believed not to be involved in catalysis. Complex I functions in the transfer of electrons from NADH to the respiratory chain. The immediate electron acceptor for the enzyme is believed to be ubiquinone.

**NDUFB10 Antibody (Center) - References**

Loeffen J.L.C.M., et al. Biochem. Biophys. Res. Commun. 253:415-422(1998).  
Wang L., et al. Submitted (AUG-1998) to the EMBL/GenBank/DDBJ databases.

Zhang Q.-H., et al. Genome Res. 10:1546-1560(2000).  
Murray J., et al. J. Biol. Chem. 278:13619-13622(2003).  
Rikova K., et al. Cell 131:1190-1203(2007).