

**RAB3C Antibody (Center)**  
**Affinity Purified Rabbit Polyclonal Antibody (Pab)**  
**Catalog # AP20486c****Specification**

---

**RAB3C Antibody (Center) - Product Information**

Application	WB,E
Primary Accession	<a href="#">O96E17</a>
Other Accession	<a href="#">P10949</a>
Reactivity	Human, Mouse
Predicted	Bovine
Host	Rabbit
Clonality	Polyclonal
Isotype	Rabbit IgG
Calculated MW	25952
Antigen Region	136-164

**RAB3C Antibody (Center) - Additional Information****Gene ID** 115827**Other Names**

Ras-related protein Rab-3C, RAB3C

**Target/Specificity**

This RAB3C antibody is generated from rabbits immunized with a KLH conjugated synthetic peptide between 136-164 amino acids from the Central region of human RAB3C.

**Dilution**

WB~~1:1000

E~~Use at an assay dependent concentration.

**Format**

Purified polyclonal antibody supplied in PBS with 0.09% (W/V) sodium azide. This antibody is purified through a protein A column, followed by peptide affinity purification.

**Storage**

Maintain refrigerated at 2-8°C for up to 2 weeks. For long term storage store at -20°C in small aliquots to prevent freeze-thaw cycles.

**Precautions**

RAB3C Antibody (Center) is for research use only and not for use in diagnostic or therapeutic procedures.

**RAB3C Antibody (Center) - Protein Information****Name** RAB3C ([HGNC:30269](#))

**Function** The small GTPases Rab are key regulators of intracellular membrane trafficking, from the formation of transport vesicles to their fusion with membranes. Rabs cycle between an inactive GDP-bound form and an active GTP-bound form that is able to recruit to membranes different sets of downstream effectors directly responsible for vesicle formation, movement, tethering and fusion.

**Cellular Location**

Cell membrane; Lipid-anchor; Cytoplasmic side

**Tissue Location**

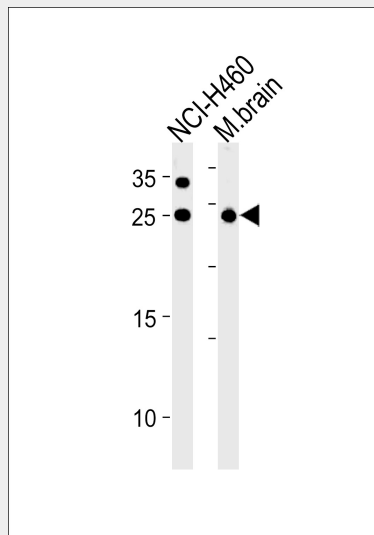
Expressed in brain, placenta and lung.

**RAB3C Antibody (Center) - Protocols**

Provided below are standard protocols that you may find useful for product applications.

- [Western Blot](#)
- [Blocking Peptides](#)
- [Dot Blot](#)
- [Immunohistochemistry](#)
- [Immunofluorescence](#)
- [Immunoprecipitation](#)
- [Flow Cytometry](#)
- [Cell Culture](#)

**RAB3C Antibody (Center) - Images**



RAB3C Antibody (Center) (Cat. #AP20486c) western blot analysis in NCI-H460 cell line and mouse brain tissue lysates (35ug/lane). This demonstrates the RAB3C antibody detected the RAB3C protein (arrow).

**RAB3C Antibody (Center) - Background**

Protein transport. Probably involved in vesicular traffic (By similarity).

**RAB3C Antibody (Center) - References**

Cheng H., et al. Biochem. Genet. 40:263-272(2002).