

SSPN Antibody (N-term)
Affinity Purified Rabbit Polyclonal Antibody (Pab)
Catalog # AP20496a**Specification**

SSPN Antibody (N-term) - Product Information

Application	WB, IHC-P,E
Primary Accession	Q14714
Reactivity	Human
Host	Rabbit
Clonality	Polyclonal
Isotype	Rabbit IgG
Antigen Region	6-34

SSPN Antibody (N-term) - Additional Information**Gene ID** 8082**Other Names**

Sarcospan, K-ras oncogene-associated protein, Kirsten-ras-associated protein, SSPN, KRAG

Target/Specificity

This SSPN antibody is generated from rabbits immunized with a KLH conjugated synthetic peptide between 6-34 amino acids from the N-terminal region of human SSPN.

Dilution

WB~~1:1000

IHC-P~~1:25

E~~Use at an assay dependent concentration.

Format

Purified polyclonal antibody supplied in PBS with 0.09% (W/V) sodium azide. This antibody is purified through a protein A column, followed by peptide affinity purification.

Storage

Maintain refrigerated at 2-8°C for up to 2 weeks. For long term storage store at -20°C in small aliquots to prevent freeze-thaw cycles.

Precautions

SSPN Antibody (N-term) is for research use only and not for use in diagnostic or therapeutic procedures.

SSPN Antibody (N-term) - Protein Information**Name** SSPN**Synonyms** KRAG

Function Component of the dystrophin-glycoprotein complex (DGC), a complex that spans the muscle plasma membrane and forms a link between the F-actin cytoskeleton and the extracellular matrix. Preferentially associates with the sarcoglycan subcomplex of the DGC.

Cellular Location

Cell membrane; Multi-pass membrane protein. Cell membrane, sarcolemma Postsynaptic cell membrane; Multi-pass membrane protein. Note=Also found in myotendinous junctions and in the postsynaptic membrane of neuromuscular junctions.

Tissue Location

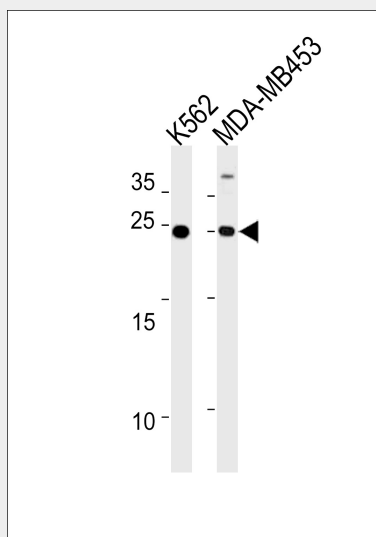
Isoform 1 is expressed exclusively in heart and skeletal muscle. Isoform 2 is expressed in heart, skeletal muscle, thymus, prostate, testis, ovary, small intestine, colon and spleen

SSPN Antibody (N-term) - Protocols

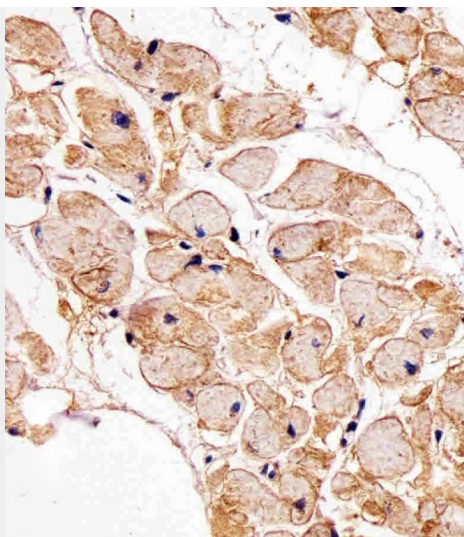
Provided below are standard protocols that you may find useful for product applications.

- [Western Blot](#)
- [Blocking Peptides](#)
- [Dot Blot](#)
- [Immunohistochemistry](#)
- [Immunofluorescence](#)
- [Immunoprecipitation](#)
- [Flow Cytometry](#)
- [Cell Culture](#)

SSPN Antibody (N-term) - Images



SSPN Antibody (N-term) (Cat. #AP20496a) western blot analysis in K562, MDA-MB453 cell line lysates (35ug/lane). This demonstrates the SSPN antibody detected the SSPN protein (arrow).



Immunohistochemical analysis of paraffin-embedded human heart section using SSPN Antibody (N-term) (Cat#AP20496A). AP20496A was diluted at 1:25 dilution. An undiluted biotinylated goat polyvalent antibody was used as the secondary, followed by DAB staining.

SSPN Antibody (N-term) - Background

Component of the dystrophin-glycoprotein complex (DGC), a complex that spans the muscle plasma membrane and forms a link between the F-actin cytoskeleton and the extracellular matrix. Preferentially associates with the sarcoglycan subcomplex of the DGC.

SSPN Antibody (N-term) - References

Crosbie R.H., et al. J. Biol. Chem. 272:31221-31224(1997).
Crosbie R.H., et al. Submitted (APR-2000) to the EMBL/GenBank/DDBJ databases.
Wiemann S., et al. Genome Res. 11:422-435(2001).
Heighway J., et al. Genomics 35:207-214(1996).