

SLC25A25 Antibody (N-term)
Affinity Purified Rabbit Polyclonal Antibody (Pab)
Catalog # AP20508a**Specification**

SLC25A25 Antibody (N-term) - Product Information

Application	IHC-P, WB,E
Primary Accession	Q6KCM7
Other Accession	Q7ZYD5 , Q8K3P6 , A2ASZ8 , Q0V7M4 , A2CEQ0
Reactivity	Human, Rat
Predicted	Zebrafish, Bovine, Mouse, Xenopus
Host	Rabbit
Clonality	Polyclonal
Isotype	Rabbit IgG
Calculated MW	52663
Antigen Region	63-93

SLC25A25 Antibody (N-term) - Additional Information**Gene ID** 114789**Other Names**

Calcium-binding mitochondrial carrier protein SCaMC-2, Mitochondrial ATP-Mg/Pi carrier protein 3, Mitochondrial Ca(2+)-dependent solute carrier protein 3, Small calcium-binding mitochondrial carrier protein 2, Solute carrier family 25 member 25, SLC25A25, APC3, KIAA1896, MCSC3, SCAMC2

Target/Specificity

This SLC25A25 antibody is generated from rabbits immunized with a KLH conjugated synthetic peptide between 63-93 amino acids from the N-terminal region of human SLC25A25.

Dilution

IHC-P~~1:25

WB~~1:1000

E~~Use at an assay dependent concentration.

Format

Purified polyclonal antibody supplied in PBS with 0.09% (W/V) sodium azide. This antibody is purified through a protein A column, followed by peptide affinity purification.

Storage

Maintain refrigerated at 2-8°C for up to 2 weeks. For long term storage store at -20°C in small aliquots to prevent freeze-thaw cycles.

Precautions

SLC25A25 Antibody (N-term) is for research use only and not for use in diagnostic or therapeutic procedures.

SLC25A25 Antibody (N-term) - Protein Information

Name SLC25A25 ([HGNC:20663](#))

Function Electroneutral antiporter that most probably mediates the transport of adenyl nucleotides through the inner mitochondrial membrane. Originally identified as an ATP-magnesium/inorganic phosphate antiporter, it could have a broader specificity for adenyl nucleotides. By regulating the mitochondrial matrix adenyl nucleotide pool could adapt to changing cellular energetic demands and indirectly regulate adenyl nucleotide-dependent metabolic pathways.

Cellular Location

Mitochondrion inner membrane; Multi-pass membrane protein

Tissue Location

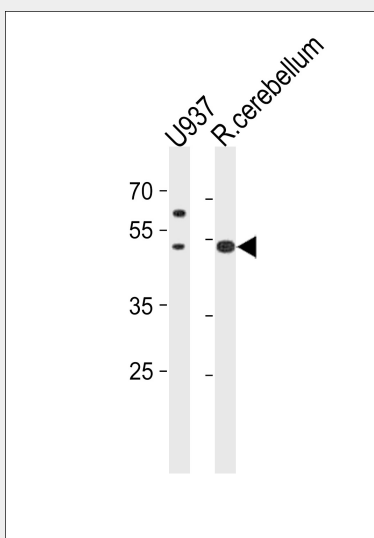
Widely expressed. Expressed in fetal and adult liver, skeletal muscle, testis, ovary, hippocampus and caudate nucleus [Isoform 2]: Expression is restricted to kidney and lung.

SLC25A25 Antibody (N-term) - Protocols

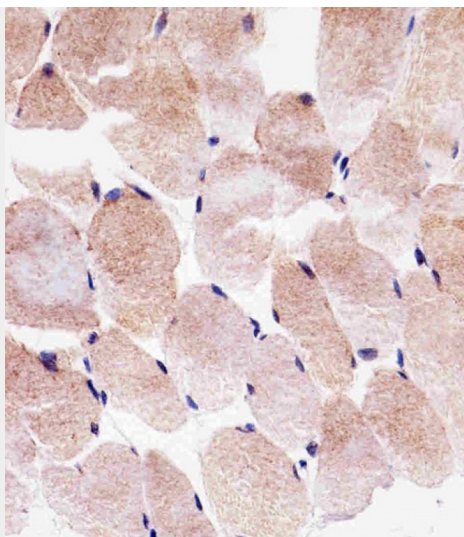
Provided below are standard protocols that you may find useful for product applications.

- [Western Blot](#)
- [Blocking Peptides](#)
- [Dot Blot](#)
- [Immunohistochemistry](#)
- [Immunofluorescence](#)
- [Immunoprecipitation](#)
- [Flow Cytometry](#)
- [Cell Culture](#)

SLC25A25 Antibody (N-term) - Images



SLC25A25 Antibody (N-term) (Cat. #AP20508a) western blot analysis in U-937 cell line and rat cerebellum tissue lysates (35ug/lane). This demonstrates the SLC25A25 antibody detected the SLC25A25 protein (arrow).



Immunohistochemical analysis of paraffin-embedded H. skeletal muscle section using SLC25A25 Antibody (N-term)(Cat#AP20508A). AP20508A was diluted at 1:25 dilution. A undiluted biotinylated goat polyvalent antibody was used as the secondary, followed by DAB staining.

SLC25A25 Antibody (N-term) - Background

Calcium-dependent mitochondrial solute carrier. Mitochondrial solute carriers shuttle metabolites, nucleotides, and cofactors through the mitochondrial inner membrane. May act as a ATP-Mg/Pi exchanger that mediates the transport of Mg-ATP in exchange for phosphate, catalyzing the net uptake or efflux of adenine nucleotides into or from the mitochondria.

SLC25A25 Antibody (N-term) - References

del Arco A., et al. J. Biol. Chem. 279:24701-24713(2004).
Fiermonte G., et al. J. Biol. Chem. 279:30722-30730(2004).
Nagase T., et al. DNA Res. 8:179-187(2001).
Clark H.F., et al. Genome Res. 13:2265-2270(2003).
Ota T., et al. Nat. Genet. 36:40-45(2004).