

M Sh2d5 Antibody (Center)
Affinity Purified Rabbit Polyclonal Antibody (Pab)
Catalog # AP20512c**Specification**

M Sh2d5 Antibody (Center) - Product Information

Application	WB,E
Primary Accession	Q8JZW5
Reactivity	Mouse
Host	Rabbit
Clonality	Polyclonal
Isotype	Rabbit IgG
Calculated MW	47380
Antigen Region	200-230

M Sh2d5 Antibody (Center) - Additional Information**Gene ID** 230863**Other Names**

SH2 domain-containing protein 5, Sh2d5

Target/Specificity

This Mouse Sh2d5 antibody is generated from rabbits immunized with a KLH conjugated synthetic peptide between 200-230 amino acids from the Central region of mouse Sh2d5.

Dilution

WB~~1:1000

E~~Use at an assay dependent concentration.

Format

Purified polyclonal antibody supplied in PBS with 0.09% (W/V) sodium azide. This antibody is purified through a protein A column, followed by peptide affinity purification.

Storage

Maintain refrigerated at 2-8°C for up to 2 weeks. For long term storage store at -20°C in small aliquots to prevent freeze-thaw cycles.

Precautions

M Sh2d5 Antibody (Center) is for research use only and not for use in diagnostic or therapeutic procedures.

M Sh2d5 Antibody (Center) - Protein Information**Name** Sh2d5 {ECO:0000312|MGI:MGI:2446215}**Function** May be involved in synaptic plasticity regulation through the control of Rac-GTP levels.

Cellular Location

Postsynaptic density

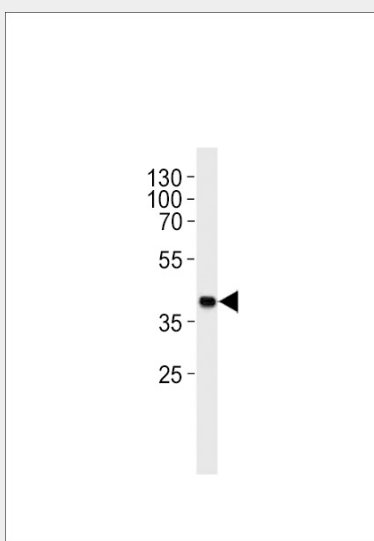
Tissue Location

Highly expressed in brain, particularly in Purkinje cells in the cerebellum and the cornu ammonis of the hippocampus.

M Sh2d5 Antibody (Center) - Protocols

Provided below are standard protocols that you may find useful for product applications.

- [Western Blot](#)
- [Blocking Peptides](#)
- [Dot Blot](#)
- [Immunohistochemistry](#)
- [Immunofluorescence](#)
- [Immunoprecipitation](#)
- [Flow Cytometry](#)
- [Cell Culture](#)

M Sh2d5 Antibody (Center) - Images

Mouse Sh2d5 Antibody (Center) (Cat. #AP20512c) western blot analysis in mouse heart tissue lysates (35ug/lane). This demonstrates the mouse Sh2d5 antibody detected the mouse Sh2d5 protein (arrow).

M Sh2d5 Antibody (Center) - Background

The function of this protein is unknown.

M Sh2d5 Antibody (Center) - References

Trinidad J.C., et al. Mol. Cell. Proteomics 5:914-922(2006).
Munton R.P., et al. Mol. Cell. Proteomics 6:283-293(2007).