

R Ccdc89 Antibody (Center)
Affinity Purified Rabbit Polyclonal Antibody (Pab)
Catalog # AP20514c

Specification

R Ccdc89 Antibody (Center) - Product Information

Application	WB,E
Primary Accession	B2RZ86
Reactivity	Human, Mouse, Rat
Host	Rabbit
Clonality	Polyclonal
Isotype	Rabbit IgG
Calculated MW	43453
Antigen Region	114-145

R Ccdc89 Antibody (Center) - Additional Information

Gene ID 293107

Other Names

Coiled-coil domain-containing protein 89 {ECO:0000312|RGD:1305335}, Bc8 orange-interacting protein, Ccdc89 {ECO:0000312|EMBL:AAI670631, ECO:0000312|RGD:1305335}

Target/Specificity

This Rat Ccdc89 antibody is generated from rabbits immunized with a KLH conjugated synthetic peptide between 114-145 amino acids from the Central region of rat Ccdc89.

Dilution

WB~~1:1000

E~~Use at an assay dependent concentration.

Format

Purified polyclonal antibody supplied in PBS with 0.09% (W/V) sodium azide. This antibody is purified through a protein A column, followed by peptide affinity purification.

Storage

Maintain refrigerated at 2-8°C for up to 2 weeks. For long term storage store at -20°C in small aliquots to prevent freeze-thaw cycles.

Precautions

R Ccdc89 Antibody (Center) is for research use only and not for use in diagnostic or therapeutic procedures.

R Ccdc89 Antibody (Center) - Protein Information

Name Ccdc89 {ECO:0000312|EMBL:AAI67063.1, ECO:0000312|RGD:1305335}

Cellular Location

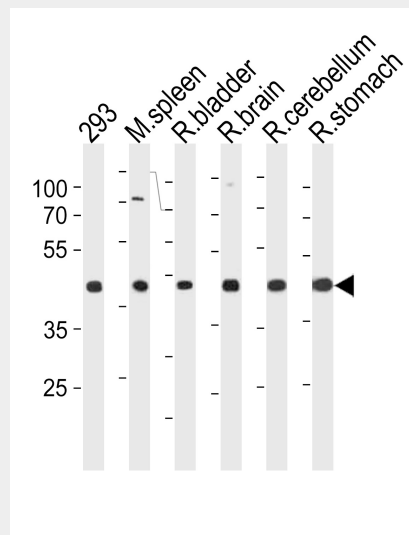
Cytoplasm {ECO:0000250|UniProtKB:Q7ZW57}. Nucleus {ECO:0000250|UniProtKB:Q7ZW57}.
Note=Uniformly distributed within the cell, but becomes recruited to the nucleus upon binding to HEY1 {ECO:0000250|UniProtKB:Q7ZW57}

R Ccdc89 Antibody (Center) - Protocols

Provided below are standard protocols that you may find useful for product applications.

- [Western Blot](#)
- [Blocking Peptides](#)
- [Dot Blot](#)
- [Immunohistochemistry](#)
- [Immunofluorescence](#)
- [Immunoprecipitation](#)
- [Flow Cytometry](#)
- [Cell Culture](#)

R Ccdc89 Antibody (Center) - Images



Rat Ccdc89 Antibody (Center) (Cat. #AP20514c) western blot analysis in 293 cell line, mouse spleen, rat bladder, brain, cerebellum and stomach tissue lysates (35ug/lane). This demonstrates the rat Ccdc89 antibody detected the rat Ccdc89 protein (arrow).

R Ccdc89 Antibody (Center) - Background

The function of this protein is unknown.

R Ccdc89 Antibody (Center) - References

Van Wayenbergh R., et al. Dev. Dyn. 228:716-725(2003).