

**POLR2C Antibody (C-term)**  
**Affinity Purified Rabbit Polyclonal Antibody (Pab)**  
**Catalog # AP20520b**

**Specification**

---

**POLR2C Antibody (C-term) - Product Information**

Application	IF, WB, IHC-P,E
Primary Accession	<a href="#">P19387</a>
Other Accession	<a href="#">P97760</a> , <a href="#">Q3T0Q3</a>
Reactivity	Human, Mouse
Predicted	Bovine
Host	Rabbit
Clonality	Polyclonal
Isotype	Rabbit IgG
Calculated MW	31441
Antigen Region	200-228

**POLR2C Antibody (C-term) - Additional Information**

**Gene ID** 5432

**Other Names**

DNA-directed RNA polymerase II subunit RPB3, RNA polymerase II subunit 3, RNA polymerase II subunit B3, DNA-directed RNA polymerase II 33 kDa polypeptide, RPB33, DNA-directed RNA polymerase II subunit C, RPB31, POLR2C

**Target/Specificity**

This POLR2C antibody is generated from rabbits immunized with a KLH conjugated synthetic peptide between 200-228 amino acids from the C-terminal region of human POLR2C.

**Dilution**

IF~~1:25

WB~~1:1000

IHC-P~~1:100

E~~Use at an assay dependent concentration.

**Format**

Purified polyclonal antibody supplied in PBS with 0.09% (W/V) sodium azide. This antibody is purified through a protein A column, followed by peptide affinity purification.

**Storage**

Maintain refrigerated at 2-8°C for up to 2 weeks. For long term storage store at -20°C in small aliquots to prevent freeze-thaw cycles.

**Precautions**

POLR2C Antibody (C-term) is for research use only and not for use in diagnostic or therapeutic procedures.

**POLR2C Antibody (C-term) - Protein Information**

**Name** POLR2C ([HGNC:9189](#))

**Function** Core component of RNA polymerase II (Pol II), a DNA-dependent RNA polymerase which synthesizes mRNA precursors and many functional non-coding RNAs using the four ribonucleoside triphosphates as substrates.

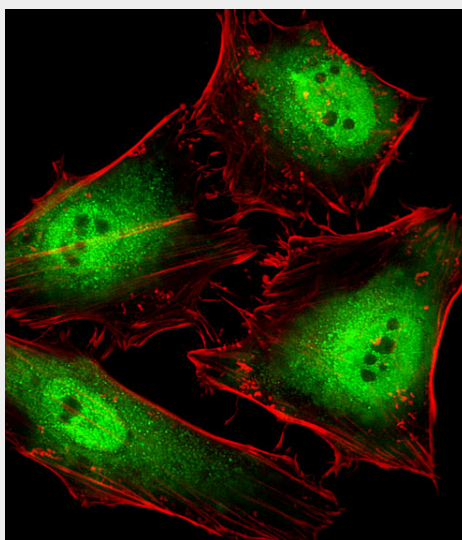
**Cellular Location**  
Nucleus.

### **POLR2C Antibody (C-term) - Protocols**

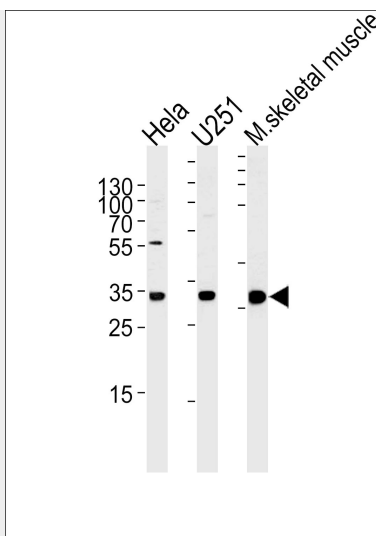
Provided below are standard protocols that you may find useful for product applications.

- [Western Blot](#)
- [Blocking Peptides](#)
- [Dot Blot](#)
- [Immunohistochemistry](#)
- [Immunofluorescence](#)
- [Immunoprecipitation](#)
- [Flow Cytometry](#)
- [Cell Culture](#)

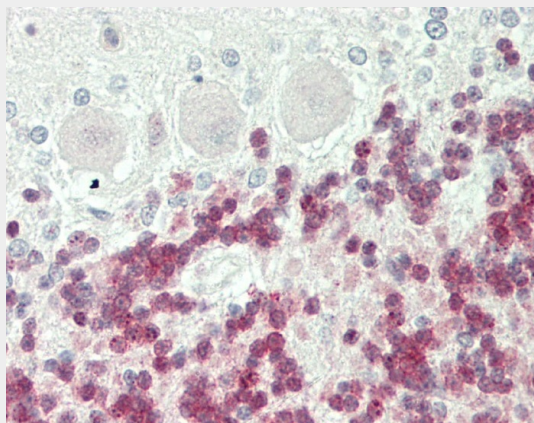
### **POLR2C Antibody (C-term) - Images**



Fluorescent image of HeLa cells stained with POLR2C Antibody (C-term)(Cat#AP20520B). AP20520B was diluted at 1:25 dilution. An Alexa Fluor 488-conjugated goat anti-rabbit IgG at 1:400 dilution was used as the secondary antibody (green). Cytoplasmic actin was counterstained with Alexa Fluor® 555 conjugated with Phalloidin (red).



POLR2C Antibody (C-term) (Cat. #AP20520b) western blot analysis in HeLa,U251 cell line and mouse skeletal muscle tissue lysates (35ug/lane).This demonstrates the POLR2C antibody detected the POLR2C protein (arrow).



Formalin-fixed and paraffin-embedded H.brain, H.cerebellum tissue reacted with POLR2C Antibody (C-term) (Cat#AP20520b).

#### **POLR2C Antibody (C-term) - Background**

DNA-dependent RNA polymerase catalyzes the transcription of DNA into RNA using the four ribonucleoside triphosphates as substrates. Component of RNA polymerase II which synthesizes mRNA precursors and many functional non-coding RNAs. Pol II is the central component of the basal RNA polymerase II transcription machinery. It is composed of mobile elements that move relative to each other. RPB3 is part of the core element with the central large cleft and the clamp element that moves to open and close the cleft (By similarity).

#### **POLR2C Antibody (C-term) - References**

Pati U.K., et al. J. Biol. Chem. 265:8400-8403(1990).  
Dammann R., et al. Biochim. Biophys. Acta 1396:153-157(1998).  
Bruno T., et al. Submitted (FEB-1998) to the EMBL/GenBank/DBJ databases.  
Loftus B.J., et al. Genomics 60:295-308(1999).  
Bienvenut W.V., et al. Submitted (MAR-2009) to UniProtKB.