

KRT20 Antibody (C-term)
Affinity Purified Rabbit Polyclonal Antibody (Pab)
Catalog # AP20533b**Specification**

KRT20 Antibody (C-term) - Product Information

Application	WB,E
Primary Accession	P35900
Reactivity	Human
Host	Rabbit
Clonality	Polyclonal
Isotype	Rabbit IgG
Calculated MW	48487
Antigen Region	377-401

KRT20 Antibody (C-term) - Additional Information**Gene ID** 54474**Other Names**

Keratin, type I cytoskeletal 20, Cytokeratin-20, CK-20, Keratin-20, K20, Protein IT, KRT20

Target/Specificity

This KRT20 antibody is generated from rabbits immunized with a KLH conjugated synthetic peptide between 377-401 amino acids from the C-terminal region of human KRT20.

Dilution

WB~~1:1000

E~~Use at an assay dependent concentration.

Format

Purified polyclonal antibody supplied in PBS with 0.09% (W/V) sodium azide. This antibody is purified through a protein A column, followed by peptide affinity purification.

Storage

Maintain refrigerated at 2-8°C for up to 2 weeks. For long term storage store at -20°C in small aliquots to prevent freeze-thaw cycles.

Precautions

KRT20 Antibody (C-term) is for research use only and not for use in diagnostic or therapeutic procedures.

KRT20 Antibody (C-term) - Protein Information**Name** KRT20

Function Plays a significant role in maintaining keratin filament organization in intestinal epithelia. When phosphorylated, plays a role in the secretion of mucin in the small intestine (By

similarity).

Cellular Location

Cytoplasm

Tissue Location

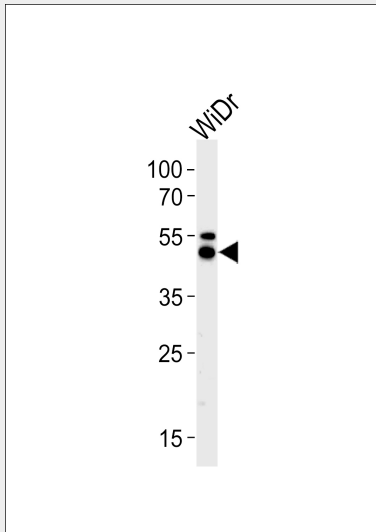
Expressed predominantly in the intestinal epithelium. Expressed in luminal cells of colonic mucosa. Also expressed in the Merkel cells of keratinized oral mucosa; specifically at the tips of some rete ridges of the gingival mucosa, in the basal layer of the palatal mucosa and in the taste buds of lingual mucosa

KRT20 Antibody (C-term) - Protocols

Provided below are standard protocols that you may find useful for product applications.

- [Western Blot](#)
- [Blocking Peptides](#)
- [Dot Blot](#)
- [Immunohistochemistry](#)
- [Immunofluorescence](#)
- [Immunoprecipitation](#)
- [Flow Cytometry](#)
- [Cell Culture](#)

KRT20 Antibody (C-term) - Images



KRT20 Antibody (C-term) (Cat. #AP20533b) western blot analysis in WiDr cell line lysates (35ug/lane). This demonstrates the KRT20 antibody detected the KRT20 protein (arrow).

KRT20 Antibody (C-term) - Background

Plays a significant role in maintaining keratin filament organization in intestinal epithelia. When phosphorylated, plays a role in the secretion of mucin in the small intestine (By similarity).

KRT20 Antibody (C-term) - References

Moll R., et al. Differentiation 53:75-93(1993).

Ota T., et al. Nat. Genet. 36:40-45(2004).
Zhou Q., et al. J. Biol. Chem. 281:16453-16461(2006).
Calnek D., et al. Differentiation 53:95-104(1993).
Moll R., et al. J. Cell Biol. 111:567-580(1990).