

PHF11 Antibody (Center)
Purified Rabbit Polyclonal Antibody (Pab)
Catalog # AP20554c

Specification

PHF11 Antibody (Center) - Product Information

Application	WB,E
Primary Accession	O9UIL8
Reactivity	Human
Host	Rabbit
Clonality	Polyclonal
Isotype	Rabbit IgG
Calculated MW	37582

PHF11 Antibody (Center) - Additional Information

Gene ID 51131

Other Names

PHD finger protein 11, BRCA1 C-terminus-associated protein, Renal carcinoma antigen NY-REN-34, PHF11, BCAP

Target/Specificity

This PHF11 antibody is generated from a rabbit immunized with a KLH conjugated synthetic peptide between 158-191 amino acids from the Central region of human PHF11.

Dilution

WB~~1:1000

E~~Use at an assay dependent concentration.

Format

Purified polyclonal antibody supplied in PBS with 0.09% (W/V) sodium azide. This antibody is purified through a protein A column, followed by peptide affinity purification.

Storage

Maintain refrigerated at 2-8°C for up to 2 weeks. For long term storage store at -20°C in small aliquots to prevent freeze-thaw cycles.

Precautions

PHF11 Antibody (Center) is for research use only and not for use in diagnostic or therapeutic procedures.

PHF11 Antibody (Center) - Protein Information

Name PHF11

Synonyms BCAP

Function Positive regulator of Th1-type cytokine gene expression.

Cellular Location

Nucleus.

Tissue Location

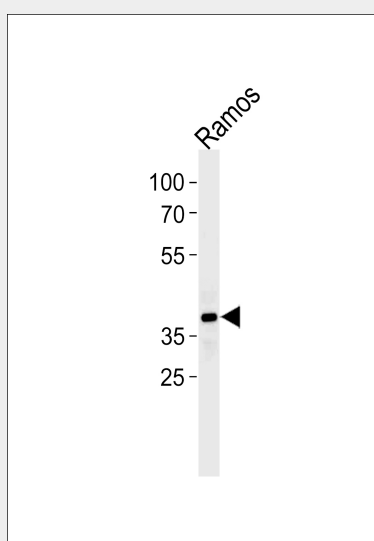
Highly expressed in T and B-cells, as well as natural killer and mature dendritic cells. Expressed at higher levels in Th1 as compared to Th2 cells. Expressed at low levels in all normal tissues tested, including lung, testis, small intestine, breast, liver and placenta.

PHF11 Antibody (Center) - Protocols

Provided below are standard protocols that you may find useful for product applications.

- [Western Blot](#)
- [Blocking Peptides](#)
- [Dot Blot](#)
- [Immunohistochemistry](#)
- [Immunofluorescence](#)
- [Immunoprecipitation](#)
- [Flow Cytometry](#)
- [Cell Culture](#)

PHF11 Antibody (Center) - Images



Western blot analysis of lysate from Ramos cell line, using PHF11 Antibody (Center) (Cat. #AP20554c). AP20554c was diluted at 1:1000 at each lane. A goat anti-rabbit(HRP) at 1:5000 dilution was used as the secondary antibody. Lysate at 35ug.

PHF11 Antibody (Center) - Background

Positive regulator of Th1-type cytokine gene expression.

PHF11 Antibody (Center) - References

Scanlan M.J.,et al.Int. J. Cancer 83:456-464(1999).
Kato H.,et al.Submitted (FEB-1998) to the EMBL/GenBank/DDBJ databases.

Dunham A.,et al.Nature 428:522-528(2004).

Mural R.J.,et al.Submitted (JUL-2005) to the EMBL/GenBank/DDBJ databases.

Zhang Y.,et al.Nat. Genet. 34:181-186(2003).