

PRB4 Antibody (Center)
Purified Rabbit Polyclonal Antibody (Pab)
Catalog # AP20557c**Specification**

PRB4 Antibody (Center) - Product Information

| | |
|-------------------|------------------------|
| Application | WB,E |
| Primary Accession | P10163 |
| Reactivity | Human |
| Host | Rabbit |
| Clonality | Polyclonal |
| Isotype | Rabbit IgG |
| Calculated MW | 31326 |
| Antigen Region | 100-130 |

PRB4 Antibody (Center) - Additional Information**Other Names**

Basic salivary proline-rich protein 4, Salivary proline-rich protein Po, Parotid o protein, Salivary proline-rich protein II-1, Protein N1, Glycosylated protein A, Peptide P-D, Proline-rich peptide IB-5, PRB4

Target/Specificity

This PRB4 antibody is generated from a rabbit immunized with a KLH conjugated synthetic peptide between 100-130 amino acids from the Central region of human PRB4.

Dilution

WB~~1:1000

E~~Use at an assay dependent concentration.

Format

Purified polyclonal antibody supplied in PBS with 0.09% (W/V) sodium azide. This antibody is purified through a protein A column, followed by peptide affinity purification.

Storage

Maintain refrigerated at 2-8°C for up to 2 weeks. For long term storage store at -20°C in small aliquots to prevent freeze-thaw cycles.

Precautions

PRB4 Antibody (Center) is for research use only and not for use in diagnostic or therapeutic procedures.

PRB4 Antibody (Center) - Protein Information

Name PRB4

Cellular Location

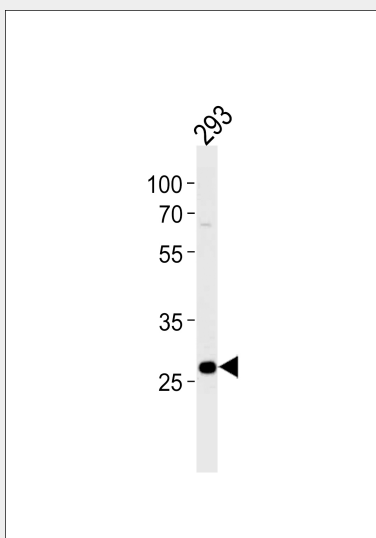
Secreted.

PRB4 Antibody (Center) - Protocols

Provided below are standard protocols that you may find useful for product applications.

- [Western Blot](#)
- [Blocking Peptides](#)
- [Dot Blot](#)
- [Immunohistochemistry](#)
- [Immunofluorescence](#)
- [Immunoprecipitation](#)
- [Flow Cytometry](#)
- [Cell Culture](#)

PRB4 Antibody (Center) - Images



Western blot analysis of lysate from 293 cell line, using PRB4 Antibody (Center) (Cat. #AP20557c). AP20557c was diluted at 1:1000 at each lane. A goat anti-rabbit IgG H&L(HRP) at 1:5000 dilution was used as the secondary antibody. Lysate at 35ug.

PRB4 Antibody (Center) - References

- Maeda N.,et al.J. Biol. Chem. 260:11123-11130(1985).
Lyons K.M.,et al.Genetics 120:267-278(1988).
Scherer S.E.,et al.Nature 440:346-351(2006).
Kauffman D.L.,et al.Crit. Rev. Oral Biol. Med. 4:287-292(1993).
Azen E.A.,et al.Am. J. Hum. Genet. 58:143-153(1996).