

Mouse Tfap2a Antibody (Center)
Purified Rabbit Polyclonal Antibody (Pab)
Catalog # AP20558c**Specification**

Mouse Tfap2a Antibody (Center) - Product Information

Application	WB,E
Primary Accession	P34056
Other Accession	P58197 , A1A4R9 , Q9N0N3
Reactivity	Mouse
Predicted	Bovine, Rat, Sheep
Host	Rabbit
Clonality	Polyclonal
Isotype	Rabbit IgG
Calculated MW	47971

Mouse Tfap2a Antibody (Center) - Additional Information**Gene ID** 21418**Other Names**

Transcription factor AP-2-alpha, AP2-alpha, AP-2 transcription factor, Activating enhancer-binding protein 2-alpha, Activator protein 2, AP-2, Tfap2a, Ap2tf, Tcfap2a

Target/Specificity

This mouse Tfap2a antibody is generated from a rabbit immunized with a KLH conjugated synthetic peptide between 134-166 amino acids from the Central region of mouse Tfap2a.

Dilution

WB~~1:1000

E~~Use at an assay dependent concentration.

Format

Purified polyclonal antibody supplied in PBS with 0.09% (W/V) sodium azide. This antibody is purified through a protein A column, followed by peptide affinity purification.

Storage

Maintain refrigerated at 2-8°C for up to 2 weeks. For long term storage store at -20°C in small aliquots to prevent freeze-thaw cycles.

Precautions

Mouse Tfap2a Antibody (Center) is for research use only and not for use in diagnostic or therapeutic procedures.

Mouse Tfap2a Antibody (Center) - Protein Information**Name** Tfap2a

Synonyms Ap2tf, Tcfap2a

Function Sequence-specific DNA-binding protein that interacts with inducible viral and cellular enhancer elements to regulate transcription of selected genes. AP-2 factors bind to the consensus sequence 5'-GCCNNNGGC-3' and activate genes involved in a large spectrum of important biological functions including proper eye, face, body wall, limb and neural tube development. They also suppress a number of genes including MCAM/MUC18, C/EBP alpha and MYC. AP-2-alpha is the only AP-2 protein required for early morphogenesis of the lens vesicle. Together with the CITED2 coactivator, stimulates the PITX2 P1 promoter transcription activation. Associates with chromatin to the PITX2 P1 promoter region.

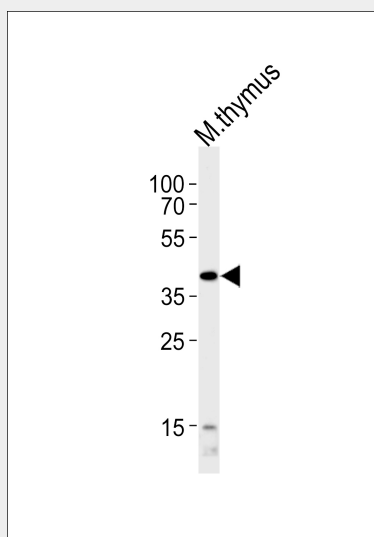
Cellular Location

Nucleus.

Mouse Tfap2a Antibody (Center) - Protocols

Provided below are standard protocols that you may find useful for product applications.

- [Western Blot](#)
- [Blocking Peptides](#)
- [Dot Blot](#)
- [Immunohistochemistry](#)
- [Immunofluorescence](#)
- [Immunoprecipitation](#)
- [Flow Cytometry](#)
- [Cell Culture](#)

Mouse Tfap2a Antibody (Center) - Images

Western blot analysis of lysate from mouse thymus tissue lysate, using Mouse Tfap2a Antibody (Center) (Cat. #AP20558c). AP20558c was diluted at 1:1000 at each lane. A goat anti-rabbit IgG H&L(HRP) at 1:5000 dilution was used as the secondary antibody. Lysate at 35ug.

Mouse Tfap2a Antibody (Center) - Background

Sequence-specific DNA-binding protein that interacts with inducible viral and cellular enhancer elements to regulate transcription of selected genes. AP-2 factors bind to the consensus sequence

5'-GCCNNNGGC-3' and activate genes involved in a large spectrum of important biological functions including proper eye, face, body wall, limb and neural tube development. They also suppress a number of genes including MCAM/MUC18, C/EBP alpha and MYC. AP-2-alpha is the only AP-2 protein required for early morphogenesis of the lens vesicle. Together with the CITED2 coactivator, stimulates the PITX2 P1 promoter transcription activation. Associates with chromatin to the PITX2 P1 promoter region.

Mouse Tfap2a Antibody (Center) - References

Moser M.,et al.Nucleic Acids Res. 21:4844-4844(1993).
Meier P.,et al.Dev. Biol. 169:1-14(1995).
Carninci P.,et al.Science 309:1559-1563(2005).
Mitchell P.J.,et al.Genes Dev. 5:105-119(1991).
Yahata T.,et al.Genomics 80:601-613(2002).