

ANP32E Antibody (N-term)
Purified Rabbit Polyclonal Antibody (Pab)
Catalog # AP20559a**Specification**

ANP32E Antibody (N-term) - Product Information

Application	IF, WB,E
Primary Accession	Q9BTT0
Other Accession	Q5XIE0 , P97822
Reactivity	Human, Mouse
Predicted	Rat
Host	Rabbit
Clonality	Polyclonal
Isotype	Rabbit IgG
Calculated MW	30692
Antigen Region	21-44

ANP32E Antibody (N-term) - Additional Information**Gene ID** 81611**Other Names**

Acidic leucine-rich nuclear phosphoprotein 32 family member E, LANP-like protein, LANP-L, ANP32E

Target/Specificity

This ANP32E antibody is generated from a rabbit immunized with a KLH conjugated synthetic peptide between 21-44 amino acids from the N-terminal region of human ANP32E.

Dilution

IF~~1:25

WB~~1:1000

E~~Use at an assay dependent concentration.

Format

Purified polyclonal antibody supplied in PBS with 0.09% (W/V) sodium azide. This antibody is purified through a protein A column, followed by peptide affinity purification.

Storage

Maintain refrigerated at 2-8°C for up to 2 weeks. For long term storage store at -20°C in small aliquots to prevent freeze-thaw cycles.

Precautions

ANP32E Antibody (N-term) is for research use only and not for use in diagnostic or therapeutic procedures.

ANP32E Antibody (N-term) - Protein Information**Name** ANP32E

Function Histone chaperone that specifically mediates the genome-wide removal of histone H2A.Z/H2AZ1 from the nucleosome: removes H2A.Z/H2AZ1 from its normal sites of deposition, especially from enhancer and insulator regions. Not involved in deposition of H2A.Z/H2AZ1 in the nucleosome. May stabilize the evicted H2A.Z/H2AZ1-H2B dimer, thus shifting the equilibrium towards dissociation and the off-chromatin state (PubMed:[24463511](#)). Inhibits activity of protein phosphatase 2A (PP2A). Does not inhibit protein phosphatase 1. May play a role in cerebellar development and synaptogenesis.

Cellular Location

Cytoplasm. Nucleus.

Tissue Location

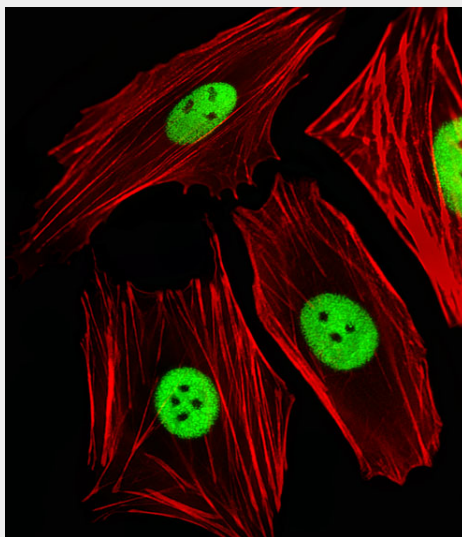
Expressed in peripheral blood leukocytes, colon, small intestine, prostate, thymus, spleen, skeletal muscle, liver and kidney.

ANP32E Antibody (N-term) - Protocols

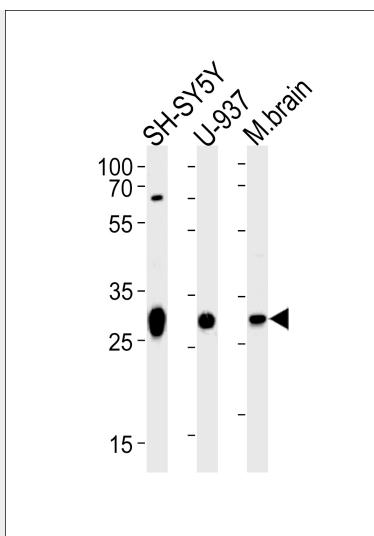
Provided below are standard protocols that you may find useful for product applications.

- [Western Blot](#)
- [Blocking Peptides](#)
- [Dot Blot](#)
- [Immunohistochemistry](#)
- [Immunofluorescence](#)
- [Immunoprecipitation](#)
- [Flow Cytometry](#)
- [Cell Culture](#)

ANP32E Antibody (N-term) - Images



Fluorescent image of SH-SY5Y cells stained with ANP32E Antibody (N-term)(Cat#AP20559a). AP20559a was diluted at 1:25 dilution. An Alexa Fluor 488-conjugated goat anti-rabbit IgG at 1:400 dilution was used as the secondary antibody (green). Cytoplasmic actin was counterstained with Alexa Fluor® 555 conjugated with Phalloidin (red).



Western blot analysis of lysates from SH-SY5Y, U-937 cell line and mouse brain tissue lysate (from left to right), using ANP32E Antibody (N-term) (Cat. #AP20559a). AP20559a was diluted at 1:1000 at each lane. A goat anti-rabbit IgG H&L(HRP) at 1:5000 dilution was used as the secondary antibody. Lysate at 35ug per lane.

ANP32E Antibody (N-term) - Background

Inhibits activity of protein phosphatase 2A (PP2A). Does not inhibit protein phosphatase 1. May play a role in cerebellar development and synaptogenesis process by modulating PP2A activity (By similarity).

ANP32E Antibody (N-term) - References

Jiang M.,et al.Cytogenet. Genome Res. 97:68-71(2002).
Ota T.,et al.Nat. Genet. 36:40-45(2004).
Bechtel S.,et al.BMC Genomics 8:399-399(2007).
Gregory S.G.,et al.Nature 441:315-321(2006).
Mural R.J.,et al.Submitted (SEP-2005) to the EMBL/GenBank/DDBJ databases.