

BICC1 Antibody (N-term)
Purified Rabbit Polyclonal Antibody (Pab)
Catalog # AP20561a

Specification

BICC1 Antibody (N-term) - Product Information

Application	WB,E
Primary Accession	O9H694
Other Accession	O99MQ1 , Q5U4T7 , Q9IA00
Reactivity	Human
Predicted	Xenopus, Mouse
Host	Rabbit
Clonality	Polyclonal
Isotype	Rabbit IgG
Calculated MW	104844
Antigen Region	75-107

BICC1 Antibody (N-term) - Additional Information

Gene ID 80114

Other Names

Protein bicaudal C homolog 1, Bic-C, BICC1

Target/Specificity

This BICC1 antibody is generated from a rabbit immunized with a KLH conjugated synthetic peptide between 75-107 amino acids from the N-terminal region of human BICC1.

Dilution

WB~~1:1000

E~~Use at an assay dependent concentration.

Format

Purified polyclonal antibody supplied in PBS with 0.09% (W/V) sodium azide. This antibody is purified through a protein A column, followed by peptide affinity purification.

Storage

Maintain refrigerated at 2-8°C for up to 2 weeks. For long term storage store at -20°C in small aliquots to prevent freeze-thaw cycles.

Precautions

BICC1 Antibody (N-term) is for research use only and not for use in diagnostic or therapeutic procedures.

BICC1 Antibody (N-term) - Protein Information

Name BICC1

Function Putative RNA-binding protein. Acts as a negative regulator of Wnt signaling. May be involved in regulating gene expression during embryonic development.

Cellular Location

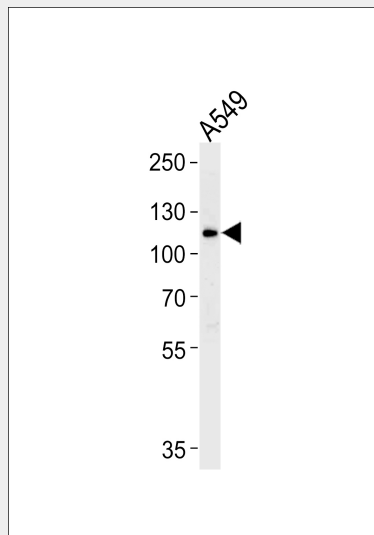
Cytoplasm.

BICC1 Antibody (N-term) - Protocols

Provided below are standard protocols that you may find useful for product applications.

- [Western Blot](#)
- [Blocking Peptides](#)
- [Dot Blot](#)
- [Immunohistochemistry](#)
- [Immunofluorescence](#)
- [Immunoprecipitation](#)
- [Flow Cytometry](#)
- [Cell Culture](#)

BICC1 Antibody (N-term) - Images



Western blot analysis of lysate from A549 cell line, using BICC1 Antibody (N-term)(Cat. #AP20561a). AP20561a was diluted at 1:1000. A goat anti-rabbit IgG H&L(HRP) at 1:5000 dilution was used as the secondary antibody. Lysate at 35ug.

BICC1 Antibody (N-term) - Background

Putative RNA-binding protein. Acts as a negative regulator of Wnt signaling. May be involved in regulating gene expression during embryonic development.

BICC1 Antibody (N-term) - References

- Ferreira E.N.,et al.Submitted (AUG-2004) to the EMBL/GenBank/DDBJ databases.
Ota T.,et al.Nat. Genet. 36:40-45(2004).
Olsen J.V.,et al.Cell 127:635-648(2006).
Choudhary C.,et al.Science 325:834-840(2009).
Olsen J.V.,et al.Sci. Signal. 3:RA3-RA3(2010).

