

ACVRL1 Antibody (N-term)
Purified Rabbit Polyclonal Antibody (Pab)
Catalog # AP20564a**Specification**

ACVRL1 Antibody (N-term) - Product Information

Application	IHC-P, WB,E
Primary Accession	P37023
Reactivity	Human
Predicted	Bovine
Host	Rabbit
Clonality	Polyclonal
Isotype	Rabbit IgG

ACVRL1 Antibody (N-term) - Additional Information**Gene ID** 94**Other Names**

Serine/threonine-protein kinase receptor R3, SKR3, Activin receptor-like kinase 1, ALK-1, TGF-B superfamily receptor type I, TSR-I, ACVRL1, ACVRLK1, ALK1

Target/Specificity

This ACVRL1 antibody is generated from a rabbit immunized with a KLH conjugated synthetic peptide between 11-44amino acids from the N-terminal region of human ACVRL1.

Dilution

IHC-P~~1:25

WB~~1:1000

E~~Use at an assay dependent concentration.

Format

Purified polyclonal antibody supplied in PBS with 0.09% (W/V) sodium azide. This antibody is purified through a protein A column, followed by peptide affinity purification.

Storage

Maintain refrigerated at 2-8°C for up to 2 weeks. For long term storage store at -20°C in small aliquots to prevent freeze-thaw cycles.

Precautions

ACVRL1 Antibody (N-term) is for research use only and not for use in diagnostic or therapeutic procedures.

ACVRL1 Antibody (N-term) - Protein Information**Name** ACVRL1**Synonyms** ACVRLK1, ALK1

Function Type I receptor for TGF-beta family ligands BMP9/GDF2 and BMP10 and important regulator of normal blood vessel development. On ligand binding, forms a receptor complex consisting of two type II and two type I transmembrane serine/threonine kinases. Type II receptors phosphorylate and activate type I receptors which autophosphorylate, then bind and activate SMAD transcriptional regulators. May bind activin as well.

Cellular Location

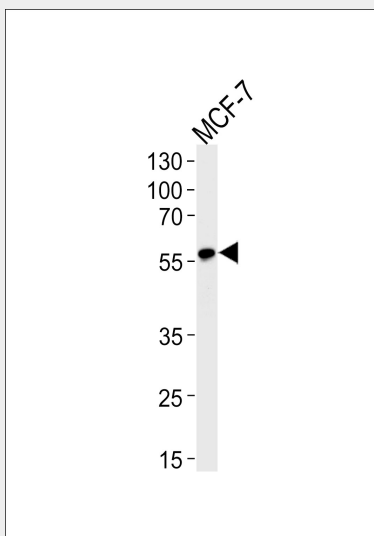
Cell membrane; Single-pass type I membrane protein

ACVRL1 Antibody (N-term) - Protocols

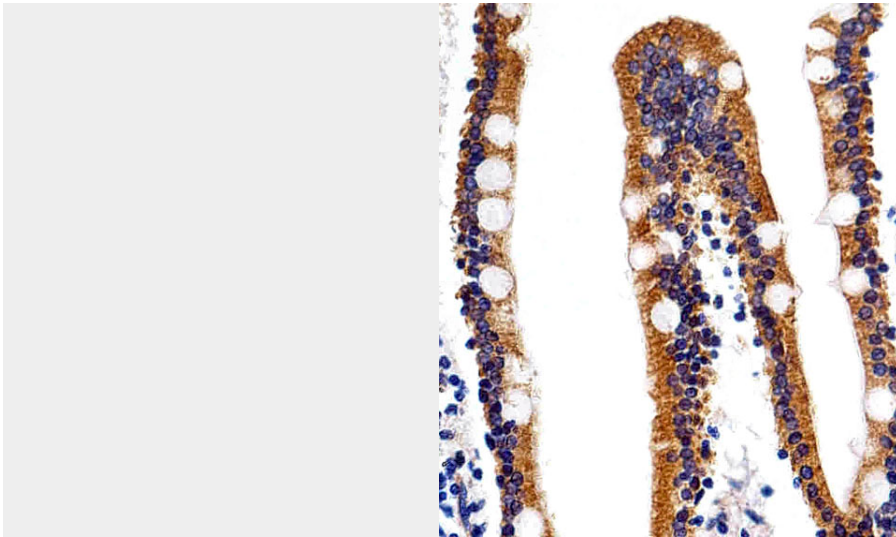
Provided below are standard protocols that you may find useful for product applications.

- [Western Blot](#)
- [Blocking Peptides](#)
- [Dot Blot](#)
- [Immunohistochemistry](#)
- [Immunofluorescence](#)
- [Immunoprecipitation](#)
- [Flow Cytometry](#)
- [Cell Culture](#)

ACVRL1 Antibody (N-term) - Images



Western blot analysis of lysate from MCF-7 cell line, using ACVRL1 Antibody (N-term)(Cat. #AP20564a). AP20564a was diluted at 1:1000. A goat anti-rabbit IgG H&L(HRP) at 1:5000 dilution was used as the secondary antibody. Lysate at 35ug.



Immunohistochemical analysis of paraffin-embedded H. small intestine section using ACVRL1 Antibody (N-term)(Cat#AP20564a). AP20564a was diluted at 1:25 dilution. A peroxidase-conjugated goat anti-rabbit IgG at 1:400 dilution was used as the secondary antibody, followed by DAB staining.

ACVRL1 Antibody (N-term) - Background

Type I receptor for TGF-beta family ligands BMP9/GDF2 and BMP10 and important regulator of normal blood vessel development. On ligand binding, forms a receptor complex consisting of two type II and two type I transmembrane serine/threonine kinases. Type II receptors phosphorylate and activate type I receptors which autophosphorylate, then bind and activate SMAD transcriptional regulators. May bind activin as well.

ACVRL1 Antibody (N-term) - References

ten Dijke P., et al. Oncogene 8:2879-2887(1993).
Attisano L., et al. Cell 75:671-680(1993).
Berg J.N., et al. Am. J. Hum. Genet. 61:60-67(1997).
Scherer S.E., et al. Nature 440:346-351(2006).
Mural R.J., et al. Submitted (JUL-2005) to the EMBL/GenBank/DDBJ databases.