

**IL4R Antibody (C-term)**  
**Purified Rabbit Polyclonal Antibody (Pab)**  
**Catalog # AP20570a****Specification**

---

**IL4R Antibody (C-term) - Product Information**

Application	WB, FC,E
Primary Accession	<a href="#">P24394</a>
Reactivity	Human
Host	Rabbit
Clonality	Polyclonal
Isotype	Rabbit IgG
Calculated MW	89658

**IL4R Antibody (C-term) - Additional Information****Gene ID** 3566**Other Names**

Interleukin-4 receptor subunit alpha, IL-4 receptor subunit alpha, IL-4R subunit alpha, IL-4R-alpha, IL-4RA, CD124, Soluble interleukin-4 receptor subunit alpha, Soluble IL-4 receptor subunit alpha, Soluble IL-4R-alpha, sIL4Ralpha/prot, IL-4-binding protein, IL4-BP, IL4R, IL4RA

**Target/Specificity**

This IL4R antibody is generated from a rabbit immunized with a KLH conjugated synthetic peptide between 677-691 amino acids from the C-terminal region of human IL4R.

**Dilution**

WB~~1:1000

FC~~1:25

E~~Use at an assay dependent concentration.

**Format**

Purified polyclonal antibody supplied in PBS with 0.09% (W/V) sodium azide. This antibody is purified through a protein A column, followed by peptide affinity purification.

**Storage**

Maintain refrigerated at 2-8°C for up to 2 weeks. For long term storage store at -20°C in small aliquots to prevent freeze-thaw cycles.

**Precautions**

IL4R Antibody (C-term) is for research use only and not for use in diagnostic or therapeutic procedures.

**IL4R Antibody (C-term) - Protein Information****Name** IL4R

## Synonyms IL4RA

**Function** Receptor for both interleukin 4 and interleukin 13 (PubMed:[17030238](#)). Couples to the JAK1/2/3-STAT6 pathway. The IL4 response is involved in promoting Th2 differentiation. The IL4/IL13 responses are involved in regulating IgE production and, chemokine and mucus production at sites of allergic inflammation. In certain cell types, can signal through activation of insulin receptor substrates, IRS1/IRS2.

## Cellular Location

Cell membrane; Single-pass type I membrane protein

## Tissue Location

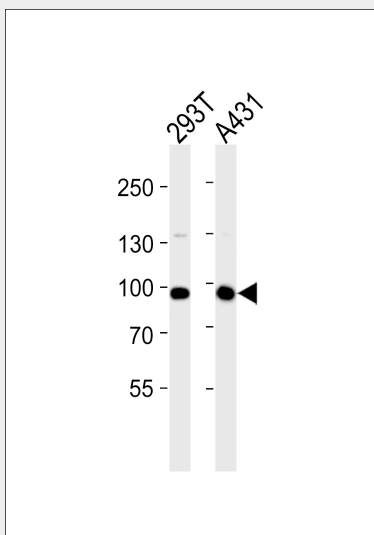
Isoform 1 and isoform 2 are highly expressed in activated T-cells

## IL4R Antibody (C-term) - Protocols

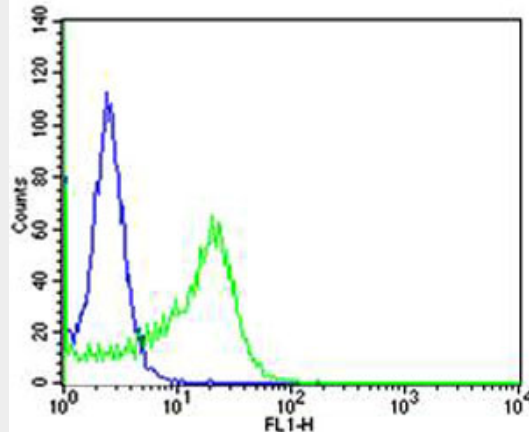
Provided below are standard protocols that you may find useful for product applications.

- [Western Blot](#)
- [Blocking Peptides](#)
- [Dot Blot](#)
- [Immunohistochemistry](#)
- [Immunofluorescence](#)
- [Immunoprecipitation](#)
- [Flow Cytometry](#)
- [Cell Culture](#)

## IL4R Antibody (C-term) - Images



Western blot analysis of lysates from 293T, A431 cell line (from left to right), using IL4R Antibody (C-term)(Cat. #AP20570a). AP20570a was diluted at 1:1000 at each lane. A goat anti-rabbit IgG H&L(HRP) at 1:5000 dilution was used as the secondary antibody. Lysates at 35ug per lane.



Flow cytometric analysis of Ramos cells using IL4R Antibody (C-term)(green, Cat#AP20570a) compared to an isotype control of rabbit IgG(blue). AP20570a was diluted at 1:25 dilution. An Alexa Fluor® 488 goat anti-rabbit IgG at 1:400 dilution was used as the secondary antibody.

#### **IL4R Antibody (C-term) - Background**

Receptor for both interleukin 4 and interleukin 13. Couples to the JAK1/2/3-STAT6 pathway. The IL4 response is involved in promoting Th2 differentiation. The IL4/IL13 responses are involved in regulating IgE production and, chemokine and mucus production at sites of allergic inflammation. In certain cell types, can signal through activation of insulin receptor substrates, IRS1/IRS2.

#### **IL4R Antibody (C-term) - References**

Idzerda R.L.,et al.J. Exp. Med. 171:861-873(1990).  
Galizzi J.-P.,et al.Int. Immunol. 2:669-675(1990).  
Kruse S.,et al.Int. Immunol. 11:1965-1970(1999).  
Loftus B.J.,et al.Genomics 60:295-308(1999).  
Ota T.,et al.Nat. Genet. 36:40-45(2004).