

EEF1B2 Antibody (Center)
Purified Rabbit Polyclonal Antibody (Pab)
Catalog # AP20573a

Specification

EEF1B2 Antibody (Center) - Product Information

Application	WB, IHC-P, IF, FC,E
Primary Accession	P24534
Other Accession	O9YGO1
Reactivity	Human
Predicted	Chicken
Host	Rabbit
Clonality	Polyclonal
Isotype	Rabbit IgG

EEF1B2 Antibody (Center) - Additional Information

Gene ID 1933

Other Names

Elongation factor 1-beta, EF-1-beta, EEF1B2, EEF1B, EF1B

Target/Specificity

This EEF1B2 antibody is generated from a rabbit immunized with a KLH conjugated synthetic peptide between 54-86 amino acids from the Central region of human EEF1B2.

Dilution

WB~~1:1000
IHC-P~~1:25
IF~~1:25
FC~~1:25
E~~Use at an assay dependent concentration.

Format

Purified polyclonal antibody supplied in PBS with 0.09% (W/V) sodium azide. This antibody is purified through a protein A column, followed by peptide affinity purification.

Storage

Maintain refrigerated at 2-8°C for up to 2 weeks. For long term storage store at -20°C in small aliquots to prevent freeze-thaw cycles.

Precautions

EEF1B2 Antibody (Center) is for research use only and not for use in diagnostic or therapeutic procedures.

EEF1B2 Antibody (Center) - Protein Information

Name EEF1B2

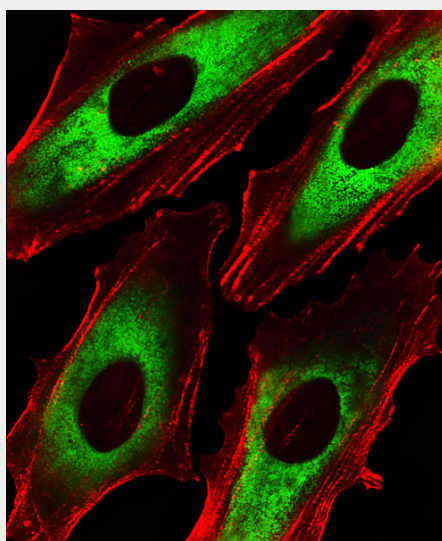
Synonyms EEF1B, EF1B

Function Catalytic subunit of the guanine nucleotide exchange factor (GEF) (eEF1B subcomplex) of the eukaryotic elongation factor 1 complex (eEF1) (By similarity). Stimulates the exchange of GDP for GTP on elongation factor 1A (eEF1A), probably by displacing GDP from the nucleotide binding pocket in eEF1A (By similarity).

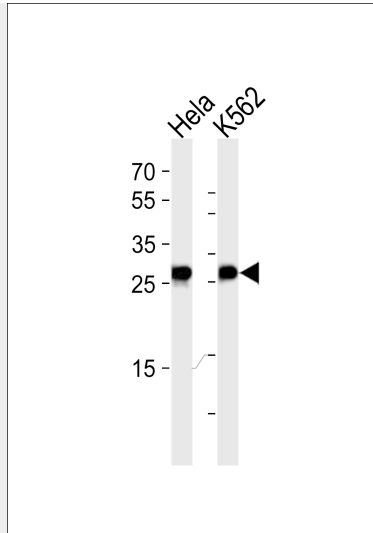
EEF1B2 Antibody (Center) - Protocols

Provided below are standard protocols that you may find useful for product applications.

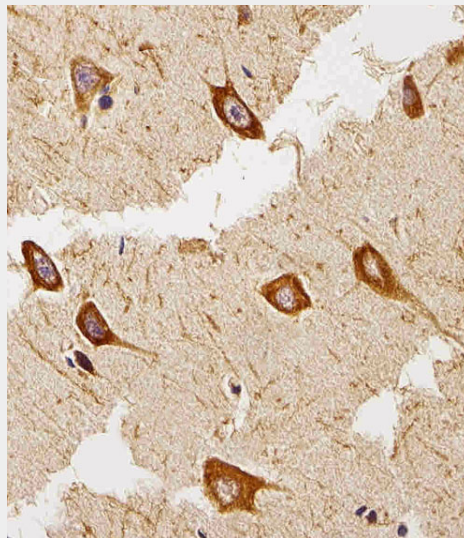
- [Western Blot](#)
- [Blocking Peptides](#)
- [Dot Blot](#)
- [Immunohistochemistry](#)
- [Immunofluorescence](#)
- [Immunoprecipitation](#)
- [Flow Cytometry](#)
- [Cell Culture](#)

EEF1B2 Antibody (Center) - Images

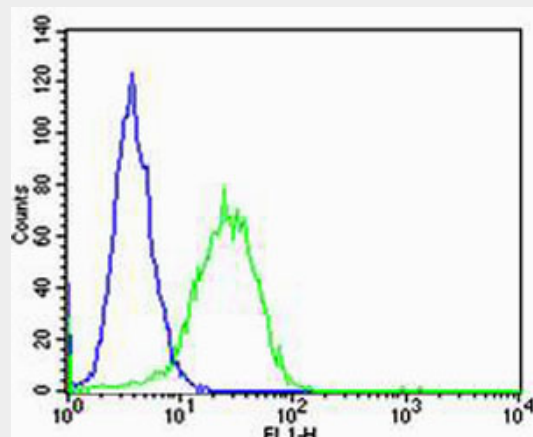
Fluorescent image of HeLa cells stained with EEF1B2 Antibody (Center) (Cat#AP20573a). AP20573a was diluted at 1:25 dilution. An Alexa Fluor 488-conjugated goat anti-rabbit IgG at 1:400 dilution was used as the secondary antibody (green). Cytoplasmic actin was counterstained with Alexa Fluor® 555 conjugated with Phalloidin (red).



Western blot analysis of lysates from HeLa, K562 cell line (from left to right), using EEF1B2 Antibody (Center) (Cat. #AP20573a). AP20573a was diluted at 1:1000 at each lane. A goat anti-rabbit IgG H&L (HRP) at 1:5000 dilution was used as the secondary antibody. Lysates at 35ug per lane.



Immunohistochemical analysis of paraffin-embedded human brain section using EEF1B2 Antibody (Center) (Cat#AP20573a). AP20573a was diluted at 1:25 dilution. A peroxidase-conjugated goat anti-rabbit IgG at 1:400 dilution was used as the secondary antibody, followed by DAB staining.



Flow cytometric analysis of Hela cells using EEF1B2 Antibody (Center) (green, Cat#AP20573a) compared to an isotype control of rabbit IgG (blue). AP20573a was diluted at 1:25 dilution. An Alexa Fluor® 488 goat anti-rabbit IgG at 1:400 dilution was used as the secondary antibody.

EEF1B2 Antibody (Center) - Background

EF-1-beta and EF-1-delta stimulate the exchange of GDP bound to EF-1-alpha to GTP.

EEF1B2 Antibody (Center) - References

Sanders J.,et al.Nucleic Acids Res. 19:4551-4551(1991).
von der Kammer H.,et al.Biochem. Biophys. Res. Commun. 177:312-317(1991).
Kalnine N.,et al.Submitted (MAY-2003) to the EMBL/GenBank/DDBJ databases.
Ebert L.,et al.Submitted (JUN-2004) to the EMBL/GenBank/DDBJ databases.
Ota T.,et al.Nat. Genet. 36:40-45(2004).