

MPP7 Antibody (N-term)
Purified Rabbit Polyclonal Antibody (Pab)
Catalog # AP20581a

Specification

MPP7 Antibody (N-term) - Product Information

Application	WB, IHC-P, FC,E
Primary Accession	Q5T2T1
Reactivity	Human
Host	Rabbit
Clonality	Polyclonal
Isotype	Rabbit IgG

MPP7 Antibody (N-term) - Additional Information

Gene ID 143098

Other Names

MAGUK p55 subfamily member 7, MPP7

Target/Specificity

This MPP7 antibody is generated from a rabbit immunized with a KLH conjugated synthetic peptide between 2-36 amino acids from the N-terminal region of human MPP7.

Dilution

WB~~1:1000

IHC-P~~1:25

FC~~1:25

E~~Use at an assay dependent concentration.

Format

Purified polyclonal antibody supplied in PBS with 0.09% (W/V) sodium azide. This antibody is purified through a protein A column, followed by peptide affinity purification.

Storage

Maintain refrigerated at 2-8°C for up to 2 weeks. For long term storage store at -20°C in small aliquots to prevent freeze-thaw cycles.

Precautions

MPP7 Antibody (N-term) is for research use only and not for use in diagnostic or therapeutic procedures.

MPP7 Antibody (N-term) - Protein Information

Name MPP7

Function Acts as an important adapter that promotes epithelial cell polarity and tight junction formation via its interaction with DLG1. Involved in the assembly of protein complexes at sites of

cell-cell contact.

Cellular Location

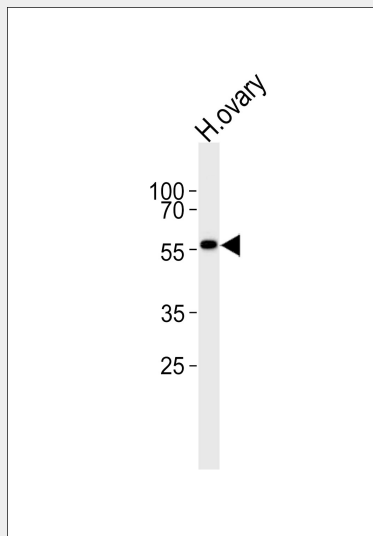
Membrane; Peripheral membrane protein. Lateral cell membrane; Peripheral membrane protein. Cell junction, tight junction Cell junction, adherens junction. Cytoplasm, cell cortex. Cytoplasm
Note=In epidermal cells, detected primarily at the lateral cell membrane.

MPP7 Antibody (N-term) - Protocols

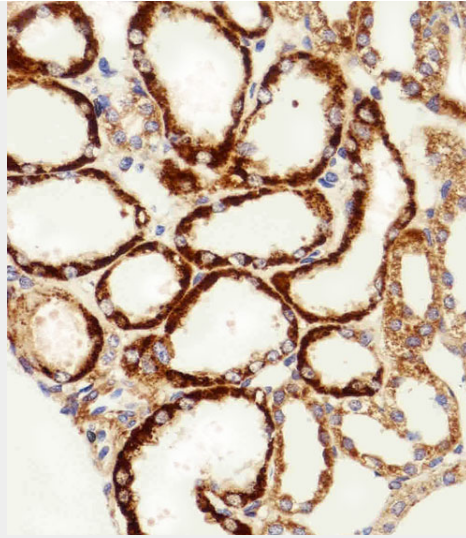
Provided below are standard protocols that you may find useful for product applications.

- [Western Blot](#)
- [Blocking Peptides](#)
- [Dot Blot](#)
- [Immunohistochemistry](#)
- [Immunofluorescence](#)
- [Immunoprecipitation](#)
- [Flow Cytometry](#)
- [Cell Culture](#)

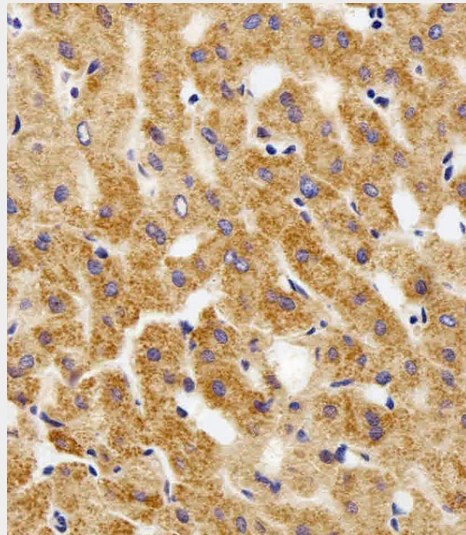
MPP7 Antibody (N-term) - Images



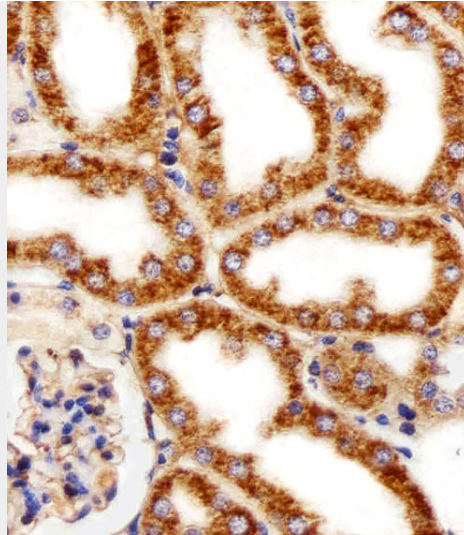
Western blot analysis of lysate from human ovary tissue lysate, using MPP7 Antibody (N-term) (Cat. #AP20581a). AP20581a was diluted at 1:1000. A goat anti-rabbit IgG H&L(HRP) at 1:5000 dilution was used as the secondary antibody. Lysate at 35ug.



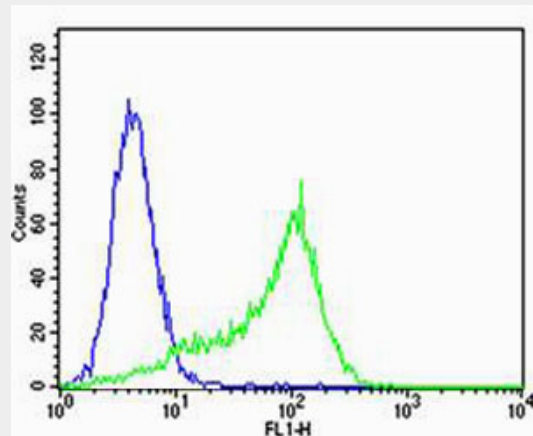
Immunohistochemical analysis of paraffin-embedded H. kidney section using MPP7 Antibody (N-term)(Cat#AP20581a). AP20581a was diluted at 1:100 dilution. A peroxidase-conjugated goat anti-rabbit IgG at 1:400 dilution was used as the secondary antibody, followed by DAB staining.



Immunohistochemical analysis of paraffin-embedded H. liver section using MPP7 Antibody (N-term)(Cat#AP20581a). AP20581a was diluted at 1:100 dilution. A peroxidase-conjugated goat anti-rabbit IgG at 1:400 dilution was used as the secondary antibody, followed by DAB staining.



Immunohistochemical analysis of paraffin-embedded M. kidney section using MPP7 Antibody (N-term)(Cat#AP20581a). AP20581a was diluted at 1:25 dilution. A peroxidase-conjugated goat anti-rabbit IgG at 1:400 dilution was used as the secondary antibody, followed by DAB staining.



Flow cytometric analysis of Hela cells using MPP7 Antibody (N-term)(green, Cat#AP20581a) compared to an isotype control of rabbit IgG(blue). AP20581a was diluted at 1:25 dilution. An Alexa Fluor® 488 goat anti-rabbit IgG at 1:400 dilution was used as the secondary antibody.

MPP7 Antibody (N-term) - Background

Acts as an important adapter that promotes epithelial cell polarity and tight junction formation via its interaction with DLG1. Involved in the assembly of protein complexes at sites of cell-cell contact.

MPP7 Antibody (N-term) - References

- Ota T.,et al.Nat. Genet. 36:40-45(2004).
- Deloukas P.,et al.Nature 429:375-381(2004).
- Mural R.J.,et al.Submitted (SEP-2005) to the EMBL/GenBank/DDBJ databases.
- Katoh M.,et al.Int. J. Mol. Med. 13:333-338(2004).
- Wells C.D.,et al.Cell 125:535-548(2006).