

**EIF4G2 Antibody (N-term)**  
**Purified Rabbit Polyclonal Antibody (Pab)**  
**Catalog # AP20594a****Specification**

---

**EIF4G2 Antibody (N-term) - Product Information**

Application	WB,E
Primary Accession	<a href="#">P78344</a>
Other Accession	<a href="#">P79398</a> , <a href="#">Q62448</a> , <a href="#">Q95L46</a>
Reactivity	Human
Predicted	Bovine, Mouse, Rabbit
Host	Rabbit
Clonality	Polyclonal
Isotype	Rabbit IgG

**EIF4G2 Antibody (N-term) - Additional Information****Gene ID** 1982**Other Names**

Eukaryotic translation initiation factor 4 gamma 2, eIF-4-gamma 2, eIF-4G 2, eIF4G 2, Death-associated protein 5, DAP-5, p97, EIF4G2 (<a href="http://www.genenames.org/cgi-bin/gene\_symbol\_report?hgnc\_id=3297" target="\_blank">HGNC:3297</a>)

**Target/Specificity**

This EIF4G2 antibody is generated from a rabbit immunized with a KLH conjugated synthetic peptide between 12-44 amino acids from the N-terminal region of human EIF4G2.

**Dilution**

WB~~1:1000

E~~Use at an assay dependent concentration.

**Format**

Purified polyclonal antibody supplied in PBS with 0.09% (W/V) sodium azide. This antibody is purified through a protein A column, followed by peptide affinity purification.

**Storage**

Maintain refrigerated at 2-8°C for up to 2 weeks. For long term storage store at -20°C in small aliquots to prevent freeze-thaw cycles.

**Precautions**

EIF4G2 Antibody (N-term) is for research use only and not for use in diagnostic or therapeutic procedures.

**EIF4G2 Antibody (N-term) - Protein Information**

**Name** EIF4G2 ([HGNC:3297](#))

**Function** Appears to play a role in the switch from cap-dependent to IRES-mediated translation during mitosis, apoptosis and viral infection. Cleaved by some caspases and viral proteases.

**Tissue Location**

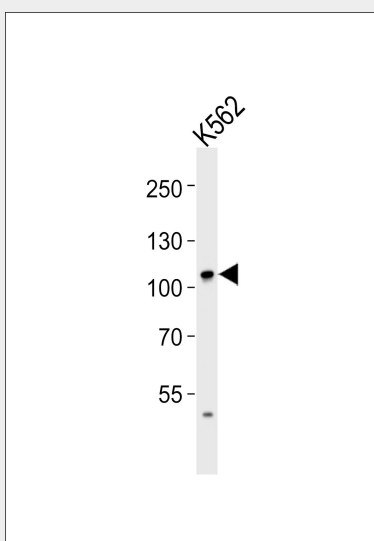
Ubiquitously expressed in all adult tissues examined, with high levels in skeletal muscle and heart. Also expressed in fetal brain, lung, liver and kidney.

**EIF4G2 Antibody (N-term) - Protocols**

Provided below are standard protocols that you may find useful for product applications.

- [Western Blot](#)
- [Blocking Peptides](#)
- [Dot Blot](#)
- [Immunohistochemistry](#)
- [Immunofluorescence](#)
- [Immunoprecipitation](#)
- [Flow Cytometry](#)
- [Cell Culture](#)

**EIF4G2 Antibody (N-term) - Images**



Western blot analysis of lysate from K562 cell line, using EIF4G2 Antibody (N-term) (Cat. #AP20594a). AP20594a was diluted at 1:1000. A goat anti-rabbit IgG H&L (HRP) at 1:5000 dilution was used as the secondary antibody. Lysate at 35ug.

**EIF4G2 Antibody (N-term) - Background**

Appears to play a role in the switch from cap-dependent to IRES-mediated translation during mitosis, apoptosis and viral infection. Cleaved by some caspases and viral proteases.

**EIF4G2 Antibody (N-term) - References**

Imataka H.,et al.EMBO J. 16:817-825(1997).  
Yamanaka S.,et al.Genes Dev. 11:321-333(1997).  
Levy-Strumpf N.,et al.Mol. Cell. Biol. 17:1615-1625(1997).  
Totoki Y.,et al.Submitted (APR-2005) to the EMBL/GenBank/DDBJ databases.

Taylor T.D.,et al.Nature 440:497-500(2006).