

FCGR3B Antibody (N-term)
Purified Rabbit Polyclonal Antibody (Pab)
Catalog # AP20596a**Specification**

FCGR3B Antibody (N-term) - Product Information

Application	WB,E
Primary Accession	O75015
Reactivity	Human
Host	Rabbit
Clonality	Polyclonal
Isotype	Rabbit IgG
Calculated MW	26243
Antigen Region	12-47

FCGR3B Antibody (N-term) - Additional Information**Gene ID** 2215**Other Names**

Low affinity immunoglobulin gamma Fc region receptor III-B, Fc-gamma RIII-beta, Fc-gamma RIII, Fc-gamma RIIIb, FcRIII, FcRIIIb, FcR-10, IgG Fc receptor III-1, CD16b, FCGR3B, CD16B, FCG3, FCGR3, IGFR3

Target/Specificity

This FCGR3B antibody is generated from a rabbit immunized with a KLH conjugated synthetic peptide between 12-47 amino acids from the N-terminal region of human FCGR3B.

Dilution

WB~~1:1000

E~~Use at an assay dependent concentration.

Format

Purified polyclonal antibody supplied in PBS with 0.09% (W/V) sodium azide. This antibody is purified through a protein A column, followed by peptide affinity purification.

Storage

Maintain refrigerated at 2-8°C for up to 2 weeks. For long term storage store at -20°C in small aliquots to prevent freeze-thaw cycles.

Precautions

FCGR3B Antibody (N-term) is for research use only and not for use in diagnostic or therapeutic procedures.

FCGR3B Antibody (N-term) - Protein Information**Name** FCGR3B

Synonyms CD16B, FCG3, FCGR3, IGFR3

Function Receptor for the Fc region of immunoglobulins gamma. Low affinity receptor. Binds complexed or aggregated IgG and also monomeric IgG. Contrary to III-A, is not capable to mediate antibody-dependent cytotoxicity and phagocytosis. May serve as a trap for immune complexes in the peripheral circulation which does not activate neutrophils.

Cellular Location

Cell membrane; Lipid-anchor, GPI-anchor. Secreted Note=Secreted after cleavage

Tissue Location

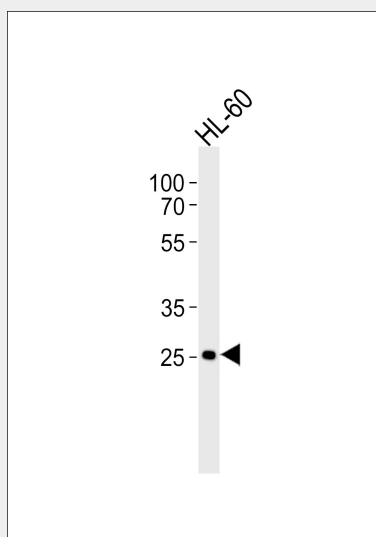
Expressed specifically by polymorphonuclear leukocytes (neutrophils). Also expressed by stimulated eosinophils

FCGR3B Antibody (N-term) - Protocols

Provided below are standard protocols that you may find useful for product applications.

- [Western Blot](#)
- [Blocking Peptides](#)
- [Dot Blot](#)
- [Immunohistochemistry](#)
- [Immunofluorescence](#)
- [Immunoprecipitation](#)
- [Flow Cytometry](#)
- [Cell Culture](#)

FCGR3B Antibody (N-term) - Images



Western blot analysis of lysate from HL-60 cell line, using FCGR3B Antibody (N-term)(Cat. #AP20596a). AP20596a was diluted at 1:1000. A goat anti-rabbit IgG H&L(HRP) at 1:5000 dilution was used as the secondary antibody. Lysate at 35ug.

FCGR3B Antibody (N-term) - Background

Receptor for the Fc region of immunoglobulins gamma. Low affinity receptor. Binds complexed or aggregated IgG and also monomeric IgG. Contrary to III-A, is not capable to mediate

antibody-dependent cytotoxicity and phagocytosis. May serve as a trap for immune complexes in the peripheral circulation which does not activate neutrophils.

FCGR3B Antibody (N-term) - References

Ravetch J.V., et al. J. Exp. Med. 170:481-497(1989).
Simmons D., et al. Nature 333:568-570(1988).
Simmons D., et al. Nature 340:662-662(1989).
Peltz G.A., et al. Proc. Natl. Acad. Sci. U.S.A. 86:1013-1017(1989).
Scallon B.J., et al. Proc. Natl. Acad. Sci. U.S.A. 86:5079-5083(1989).