

HBG2 Antibody (C-term)
Purified Rabbit Polyclonal Antibody (Pab)
Catalog # AP20600c**Specification**

HBG2 Antibody (C-term) - Product Information

Application	WB, IHC-P, FC,E
Primary Accession	P69892
Other Accession	P69891
Reactivity	Human, Mouse
Host	Rabbit
Clonality	Polyclonal
Isotype	Rabbit IgG

HBG2 Antibody (C-term) - Additional Information**Gene ID** 3048**Other Names**

Hemoglobin subunit gamma-2, Gamma-2-globin, Hb F Ggamma, Hemoglobin gamma-2 chain, Hemoglobin gamma-G chain, HBG2

Target/Specificity

This HBG2 antibody is generated from a rabbit immunized with a KLH conjugated synthetic peptide between 101-133 amino acids from the C-terminal region of human HBG2.

Dilution

WB~~1:1000

IHC-P~~1:25

FC~~1:25

E~~Use at an assay dependent concentration.

Format

Purified polyclonal antibody supplied in PBS with 0.09% (W/V) sodium azide. This antibody is purified through a protein A column, followed by peptide affinity purification.

Storage

Maintain refrigerated at 2-8°C for up to 2 weeks. For long term storage store at -20°C in small aliquots to prevent freeze-thaw cycles.

Precautions

HBG2 Antibody (C-term) is for research use only and not for use in diagnostic or therapeutic procedures.

HBG2 Antibody (C-term) - Protein Information**Name** HBG2

Function Gamma chains make up the fetal hemoglobin F, in combination with alpha chains.

Tissue Location

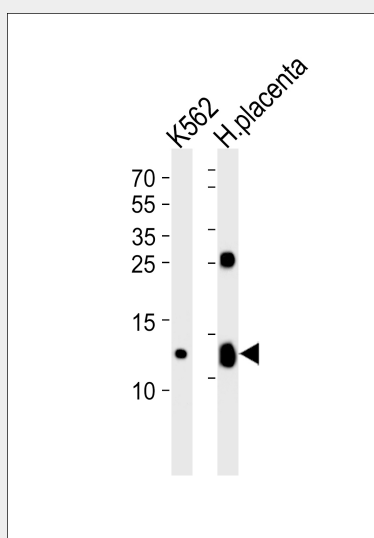
Red blood cells.

HBG2 Antibody (C-term) - Protocols

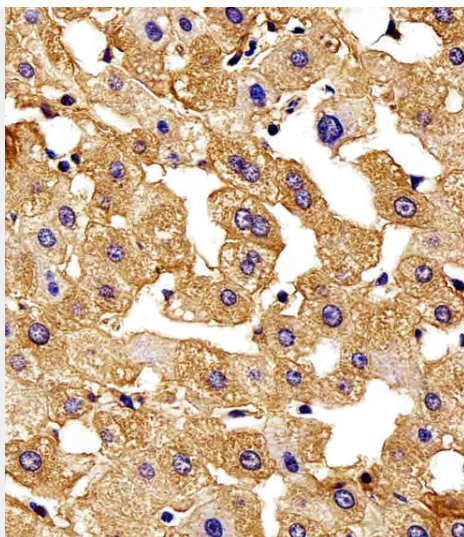
Provided below are standard protocols that you may find useful for product applications.

- [Western Blot](#)
- [Blocking Peptides](#)
- [Dot Blot](#)
- [Immunohistochemistry](#)
- [Immunofluorescence](#)
- [Immunoprecipitation](#)
- [Flow Cytometry](#)
- [Cell Culture](#)

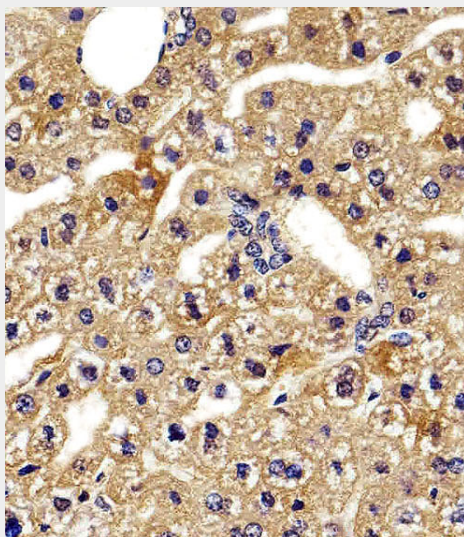
HBG2 Antibody (C-term) - Images



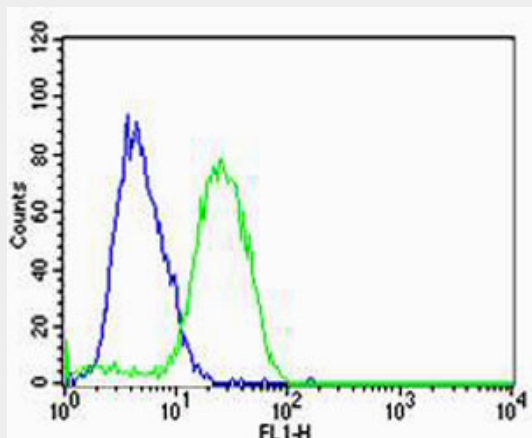
Western blot analysis of lysates from K562 cell line and human placenta tissue lysate (from left to right), using HBG2 Antibody (C-term)(Cat. # AP20600c). AP20600c was diluted at 1:1000 at each lane. A goat anti-rabbit IgG H&L(HRP) at 1:5000 dilution was used as the secondary antibody. Lysates at 35ug per lane.



Immunohistochemical analysis of paraffin-embedded H. liver section using HBG2 Antibody (C-term)(Cat#AP8074c). AP8074c was diluted at 1:100 dilution. A peroxidase-conjugated goat anti-rabbit IgG at 1:400 dilution was used as the secondary antibody, followed by DAB staining.



Immunohistochemical analysis of paraffin-embedded M. liver section using HBG2 Antibody (C-term)(Cat#AP20600c). AP20600c was diluted at 1:100 dilution. A peroxidase-conjugated goat anti-rabbit IgG at 1:400 dilution was used as the secondary antibody, followed by DAB staining.



Flow cytometric analysis of U-87 MG cells using HBG2 Antibody (C-term)(green, Cat#AP20600c) compared to an isotype control of rabbit IgG(blue). AP20600c was diluted at 1:25 dilution. An Alexa Fluor® 488 goat anti-rabbit IgG at 1:400 dilution was used as the secondary antibody.

HBG2 Antibody (C-term) - Background

Gamma chains make up the fetal hemoglobin F, in combination with alpha chains.

HBG2 Antibody (C-term) - References

Slightom J.L.,et al.Cell 21:627-638(1980).
Cavallesco C.,et al.Gene 12:215-221(1980).
Kutlar F.,et al.Submitted (JUN-2004) to the EMBL/GenBank/DDBJ databases.
Ota T.,et al.Nat. Genet. 36:40-45(2004).
Schroeder W.A.,et al.Biochemistry 2:992-1008(1963).