

AGAP4 Antibody (C-term)
Purified Rabbit Polyclonal Antibody (Pab)
Catalog # AP20603c**Specification**

AGAP4 Antibody (C-term) - Product Information

Application	WB, IHC-P, IF, FC,E
Primary Accession	Q96P64
Other Accession	Q8TF27 , A6NIR3 , Q5VW22 , Q5VTM2
Reactivity	Human
Predicted	Monkey
Host	Rabbit
Clonality	Polyclonal
Isotype	Rabbit IgG

AGAP4 Antibody (C-term) - Additional Information**Gene ID** 119016**Other Names**

Arf-GAP with GTPase, ANK repeat and PH domain-containing protein 4, Centaurin-gamma-like family member 1, Centaurin-gamma-like family member 5, AGAP8, CTGLF1, CTGLF5, MRIP2

Target/Specificity

This AGAP4 antibody is generated from a rabbit immunized with a KLH conjugated synthetic peptide between 498-531 amino acids from the C-terminal region of human AGAP4

Dilution

WB~~1:1000

IHC-P~~1:25

IF~~1:25

FC~~1:25

E~~Use at an assay dependent concentration.

Format

Purified polyclonal antibody supplied in PBS with 0.09% (W/V) sodium azide. This antibody is purified through a protein A column, followed by peptide affinity purification.

Storage

Maintain refrigerated at 2-8°C for up to 2 weeks. For long term storage store at -20°C in small aliquots to prevent freeze-thaw cycles.

Precautions

AGAP4 Antibody (C-term) is for research use only and not for use in diagnostic or therapeutic procedures.

AGAP4 Antibody (C-term) - Protein Information

Name AGAP4 ([HGNC:23459](#))

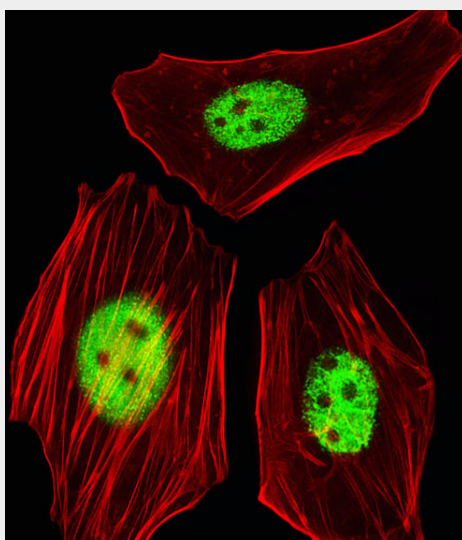
Function Putative GTPase-activating protein.

AGAP4 Antibody (C-term) - Protocols

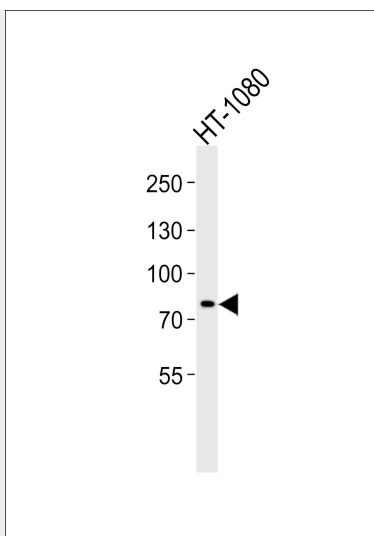
Provided below are standard protocols that you may find useful for product applications.

- [Western Blot](#)
- [Blocking Peptides](#)
- [Dot Blot](#)
- [Immunohistochemistry](#)
- [Immunofluorescence](#)
- [Immunoprecipitation](#)
- [Flow Cytometry](#)
- [Cell Culture](#)

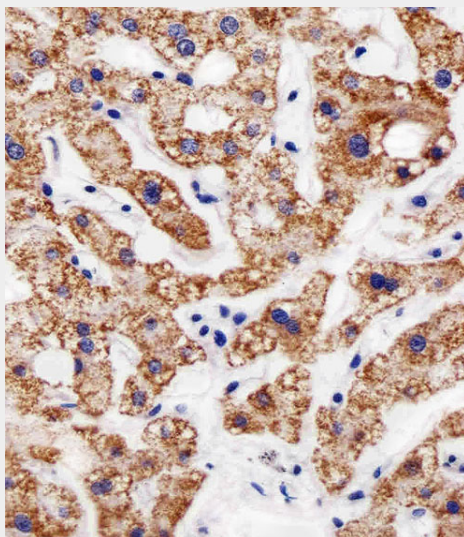
AGAP4 Antibody (C-term) - Images



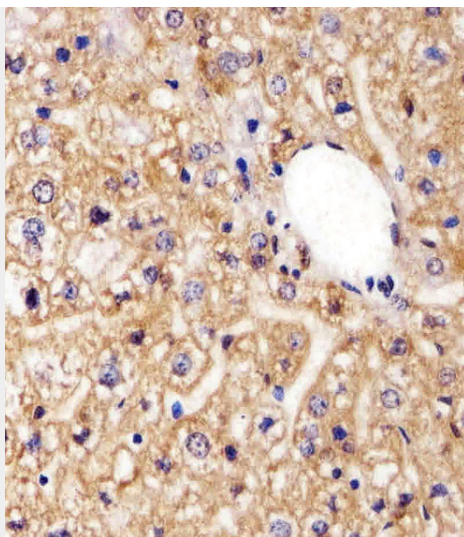
Fluorescent image of HeLa cells stained with AGAP4 Antibody (C-term)(Cat#AP20603c). AP20603c was diluted at 1:25 dilution. An Alexa Fluor 488-conjugated goat anti-rabbit IgG at 1:400 dilution was used as the secondary antibody (green). Cytoplasmic actin was counterstained with Alexa Fluor® 555 conjugated with Phalloidin (red).



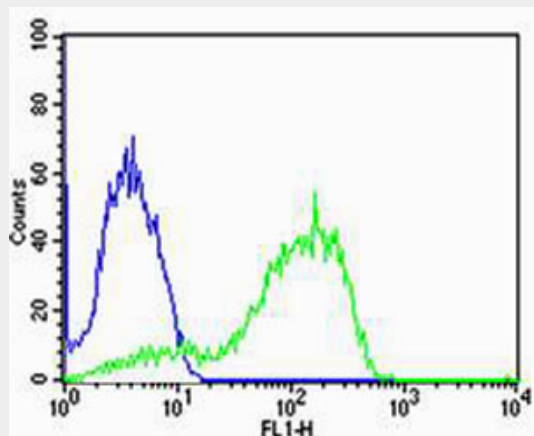
Western blot analysis of lysate from HT-1080 cell line, using AGAP4 Antibody (C-term)(Cat. # AP20603c). AP20603c was diluted at 1:1000. A goat anti-rabbit IgG H&L(HRP) at 1:5000 dilution was used as the secondary antibody. Lysate at 35ug.



Immunohistochemical analysis of paraffin-embedded H. liver section using AGAP4 Antibody (C-term)(Cat#AP20603c). AP20603c was diluted at 1:25 dilution. A peroxidase-conjugated goat anti-rabbit IgG at 1:400 dilution was used as the secondary antibody, followed by DAB staining.



Immunohistochemical analysis of paraffin-embedded M. liver section using AGAP4 Antibody (C-term)(Cat#AP20603c). AP20603c was diluted at 1:25 dilution. A peroxidase-conjugated goat anti-rabbit IgG at 1:400 dilution was used as the secondary antibody, followed by DAB staining.



Flow cytometric analysis of MCF-7 cells using AGAP4 Antibody (C-term)(green, Cat#AP20603c) compared to an isotype control of rabbit IgG(blue). AP20603c was diluted at 1:25 dilution. An Alexa Fluor® 488 goat anti-rabbit IgG at 1:400 dilution was used as the secondary antibody.

AGAP4 Antibody (C-term) - Background

Putative GTPase-activating protein (Potential).

AGAP4 Antibody (C-term) - References

Deloukas P.,et al.Nature 429:375-381(2004).
Varela I.,et al.Nature 469:539-542(2011).