

**LYZ Antibody (C-term)**  
**Purified Rabbit Polyclonal Antibody (Pab)**  
**Catalog # AP20609C****Specification**

---

**LYZ Antibody (C-term) - Product Information**

Application	WB, IHC-P,E
Primary Accession	<a href="#">P61626</a>
Reactivity	Human
Host	Rabbit
Clonality	Polyclonal
Isotype	Rabbit IgG

**LYZ Antibody (C-term) - Additional Information****Gene ID** 4069**Other Names**

Lysozyme C, 4-beta-N-acetylmuramidase C, LYZ, LZM

**Target/Specificity**

This LYZ antibody is generated from a rabbit immunized with a KLH conjugated synthetic peptide between 119-154 amino acids from the C-terminal region of human LYZ.

**Dilution**

WB~~1:1000

IHC-P~~1:25

E~~Use at an assay dependent concentration.

**Format**

Purified polyclonal antibody supplied in PBS with 0.09% (W/V) sodium azide. This antibody is purified through a protein A column, followed by peptide affinity purification.

**Storage**

Maintain refrigerated at 2-8°C for up to 2 weeks. For long term storage store at -20°C in small aliquots to prevent freeze-thaw cycles.

**Precautions**

LYZ Antibody (C-term) is for research use only and not for use in diagnostic or therapeutic procedures.

**LYZ Antibody (C-term) - Protein Information****Name** LYZ**Synonyms** LZM**Function** Lysozymes have primarily a bacteriolytic function; those in tissues and body fluids are

associated with the monocyte-macrophage system and enhance the activity of immunoagents.

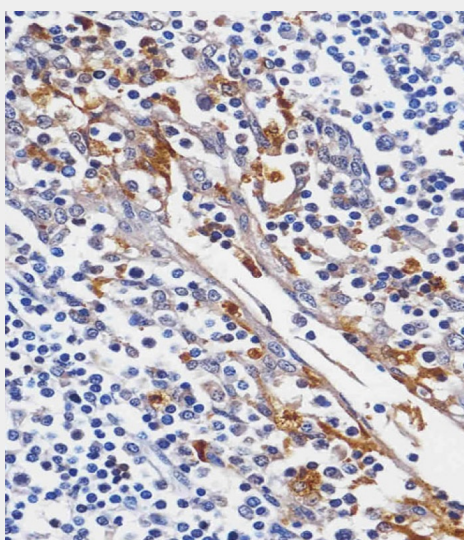
#### **Cellular Location** Secreted.

#### **LYZ Antibody (C-term) - Protocols**

Provided below are standard protocols that you may find useful for product applications.

- [Western Blot](#)
- [Blocking Peptides](#)
- [Dot Blot](#)
- [Immunohistochemistry](#)
- [Immunofluorescence](#)
- [Immunoprecipitation](#)
- [Flow Cytometry](#)
- [Cell Culture](#)

#### **LYZ Antibody (C-term) - Images**



AP20609C staining LYZ in human tonsil tissue sections by Immunohistochemistry (IHC-P - paraformaldehyde-fixed, paraffin-embedded sections). Tissue was fixed with formaldehyde and blocked with 3% BSA for 0.5 hour at room temperature; antigen retrieval was by heat mediation with a citrate buffer (pH6). Samples were incubated with primary antibody (1/25) for 1 hour at 37°C. A undiluted biotinylated goat polyvalent antibody was used as the secondary antibody.

#### **LYZ Antibody (C-term) - Background**

Lysozymes have primarily a bacteriolytic function; those in tissues and body fluids are associated with the monocyte-macrophage system and enhance the activity of immunoagents.

#### **LYZ Antibody (C-term) - References**

Castanon M.J., et al. Gene 66:223-234(1988).  
Chung L.P., et al. Proc. Natl. Acad. Sci. U.S.A. 85:6227-6231(1988).  
Yoshimura K., et al. Biochem. Biophys. Res. Commun. 150:794-801(1988).  
Peters C.W.B., et al. Eur. J. Biochem. 182:507-516(1989).

Huang B.,et al.Sheng Wu Hua Hsueh Tsa Chih 9:269-273(1993).