

GDF10 Antibody (N-term)
Purified Rabbit Polyclonal Antibody (Pab)
Catalog # AP2060a**Specification**

GDF10 Antibody (N-term) - Product Information

| | |
|-------------------|---------------------------|
| Application | WB, IHC-P,E |
| Primary Accession | P55107 |
| Other Accession | NP_004953 |
| Reactivity | Human |
| Host | Rabbit |
| Clonality | Polyclonal |
| Isotype | Rabbit IgG |
| Calculated MW | 53122 |
| Antigen Region | 33-62 |

GDF10 Antibody (N-term) - Additional Information**Gene ID** 2662**Other Names**

Bone morphogenetic protein 3B, BMP-3B, Bone-inducing protein, BIP, Growth/differentiation factor 10, GDF-10, GDF10, BMP3B

Target/Specificity

This GDF10 antibody is generated from rabbits immunized with a KLH conjugated synthetic peptide between 33-62 amino acids from the N-terminal region of human GDF10.

Dilution

WB~~1:1000

IHC-P~~1:50~100

E~~Use at an assay dependent concentration.

Format

Purified polyclonal antibody supplied in PBS with 0.09% (W/V) sodium azide. This antibody is prepared by Saturated Ammonium Sulfate (SAS) precipitation followed by dialysis against PBS.

Storage

Maintain refrigerated at 2-8°C for up to 2 weeks. For long term storage store at -20°C in small aliquots to prevent freeze-thaw cycles.

Precautions

GDF10 Antibody (N-term) is for research use only and not for use in diagnostic or therapeutic procedures.

GDF10 Antibody (N-term) - Protein Information**Name** GDF10 ([HGNC:4215](#))

Synonyms BMP3B

Function Growth factor involved in osteogenesis and adipogenesis. Plays an inhibitory role in the process of osteoblast differentiation via SMAD2/3 pathway. Plays an inhibitory role in the process of adipogenesis.

Cellular Location

Secreted {ECO:0000250|UniProtKB:P97737}.

Tissue Location

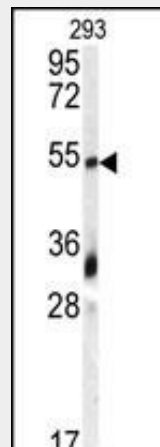
Expressed in femur, brain, lung, skeletal muscle, pancreas and testis.

GDF10 Antibody (N-term) - Protocols

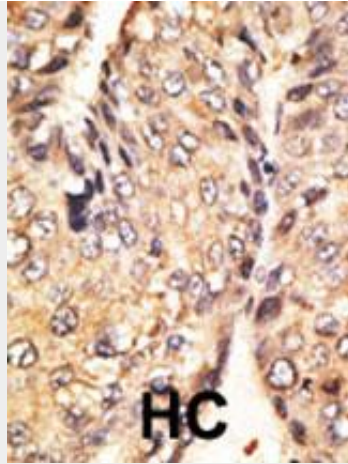
Provided below are standard protocols that you may find useful for product applications.

- [Western Blot](#)
- [Blocking Peptides](#)
- [Dot Blot](#)
- [Immunohistochemistry](#)
- [Immunofluorescence](#)
- [Immunoprecipitation](#)
- [Flow Cytometry](#)
- [Cell Culture](#)

GDF10 Antibody (N-term) - Images



Western blot analysis of anti-GDF10 Antibody (N-term) (Cat.#AP2060a) in 293 cell line lysates (35ug/lane). GDF10 (arrow) was detected using the purified Pab.



Formalin-fixed and paraffin-embedded human cancer tissue reacted with the primary antibody, which was peroxidase-conjugated to the secondary antibody, followed by DAB staining. This data demonstrates the use of this antibody for immunohistochemistry; clinical relevance has not been evaluated. BC = breast carcinoma; HC = hepatocarcinoma.

GDF10 Antibody (N-term) - Background

GDF10 is a member of the bone morphogenetic protein (BMP) family and the TGF-beta superfamily. This group of proteins is characterized by a polybasic proteolytic processing site which is cleaved to produce a mature protein containing seven conserved cysteine residues. The members of this family are regulators of cell growth and differentiation in both embryonic and adult tissues. Studies in mice suggest that the protein encoded by this gene plays a role in skeletal morphogenesis.

GDF10 Antibody (N-term) - References

- Ducy, P., et al., *Kidney Int.* 57(6):2207-2214 (2000).
- Hino, J., et al., *Biochem. Biophys. Res. Commun.* 223(2):304-310 (1996).
- Cunningham, N.S., et al., *Growth Factors* 12(2):99-109 (1995).