

GDF10 Antibody (Center)
Affinity Purified Rabbit Polyclonal Antibody (Pab)
Catalog # AP2060c

Specification

GDF10 Antibody (Center) - Product Information

Application	WB, FC,E
Primary Accession	P55107
Other Accession	Q08DX6 , NP_004953
Reactivity	Human, Mouse
Predicted	Bovine
Host	Rabbit
Clonality	Polyclonal
Isotype	Rabbit IgG
Calculated MW	53122
Antigen Region	317-344

GDF10 Antibody (Center) - Additional Information

Gene ID 2662

Other Names

Bone morphogenetic protein 3B, BMP-3B, Bone-inducing protein, BIP, Growth/differentiation factor 10, GDF-10, GDF10, BMP3B

Target/Specificity

This GDF10 antibody is generated from rabbits immunized with a KLH conjugated synthetic peptide between 317-344 amino acids from the Central region of human GDF10.

Dilution

WB~~1:1000
FC~~1:10~50
E~~Use at an assay dependent concentration.

Format

Purified polyclonal antibody supplied in PBS with 0.09% (W/V) sodium azide. This antibody is purified through a protein A column, followed by peptide affinity purification.

Storage

Maintain refrigerated at 2-8°C for up to 2 weeks. For long term storage store at -20°C in small aliquots to prevent freeze-thaw cycles.

Precautions

GDF10 Antibody (Center) is for research use only and not for use in diagnostic or therapeutic procedures.

GDF10 Antibody (Center) - Protein Information

Name GDF10 ([HGNC:4215](#))

Synonyms BMP3B

Function Growth factor involved in osteogenesis and adipogenesis. Plays an inhibitory role in the process of osteoblast differentiation via SMAD2/3 pathway. Plays an inhibitory role in the process of adipogenesis.

Cellular Location

Secreted {ECO:0000250|UniProtKB:P97737}.

Tissue Location

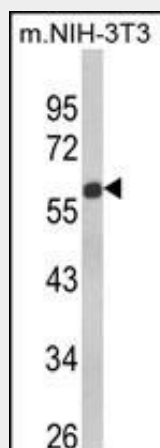
Expressed in femur, brain, lung, skeletal muscle, pancreas and testis.

GDF10 Antibody (Center) - Protocols

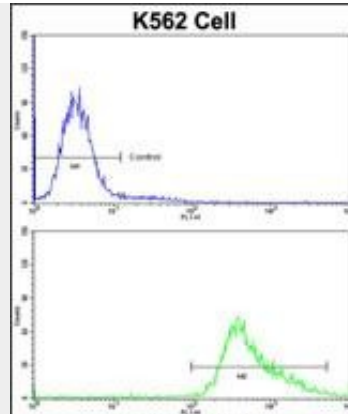
Provided below are standard protocols that you may find useful for product applications.

- [Western Blot](#)
- [Blocking Peptides](#)
- [Dot Blot](#)
- [Immunohistochemistry](#)
- [Immunofluorescence](#)
- [Immunoprecipitation](#)
- [Flow Cytometry](#)
- [Cell Culture](#)

GDF10 Antibody (Center) - Images



Western blot analysis of GDF10 Antibody (Center) (Cat. #AP2060c) in NIH-3T3 cell line lysates (35ug/lane). GDF10 (arrow) was detected using the purified Pab.



Flow cytometric analysis of K562 cells using GDF10 Antibody (Center)(bottom histogram) compared to a negative control cell (top histogram) FITC-conjugated goat-anti-rabbit secondary antibodies were used for the analysis.

GDF10 Antibody (Center) - Background

GDF10 is a member of the bone morphogenetic protein (BMP) family and the TGF-beta superfamily. This group of proteins is characterized by a polybasic proteolytic processing site which is cleaved to produce a mature protein containing seven conserved cysteine residues. The members of this family are regulators of cell growth and differentiation in both embryonic and adult tissues. Studies in mice suggest that the protein encoded by this gene plays a role in skeletal morphogenesis.

GDF10 Antibody (Center) - References

- Ducy, P., et al., *Kidney Int.* 57(6):2207-2214 (2000).
- Hino, J., et al., *Biochem. Biophys. Res. Commun.* 223(2):304-310 (1996).
- Cunningham, N.S., et al., *Growth Factors* 12(2):99-109 (1995).