

**FXYP6 Antibody (C-term)  
Purified Rabbit Polyclonal Antibody (Pab)  
Catalog # AP20610c****Specification**

---

**FXYP6 Antibody (C-term) - Product Information**

Application	WB, IHC-P, FC,E
Primary Accession	<a href="#">Q9H0Q3</a>
Other Accession	<a href="#">Q4R566</a>
Reactivity	Human, Mouse, Rat
Predicted	Monkey
Host	Rabbit
Clonality	Polyclonal
Isotype	Rabbit IgG

**FXYP6 Antibody (C-term) - Additional Information****Gene ID** 53826**Other Names**

FXYP domain-containing ion transport regulator 6, Phosphohippolin, FXYP6

**Target/Specificity**

This FXYP6 antibody is generated from a rabbit immunized with a KLH conjugated synthetic peptide between 81-115amino acids from the C-terminal region of human FXYP6.

**Dilution**

WB~~1:1000

IHC-P~~1:25

FC~~1:25

**Format**

Purified polyclonal antibody supplied in PBS with 0.09% (W/V) sodium azide. This antibody is purified through a protein A column, followed by peptide affinity purification.

**Storage**

Maintain refrigerated at 2-8°C for up to 2 weeks. For long term storage store at -20°C in small aliquots to prevent freeze-thaw cycles.

**Precautions**

FXYP6 Antibody (C-term) is for research use only and not for use in diagnostic or therapeutic procedures.

**FXYP6 Antibody (C-term) - Protein Information****Name** FXYP6**Cellular Location**

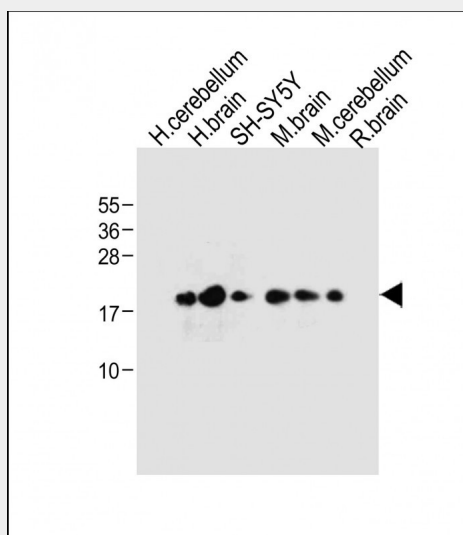
Membrane; Single-pass type I membrane protein

### FXYD6 Antibody (C-term) - Protocols

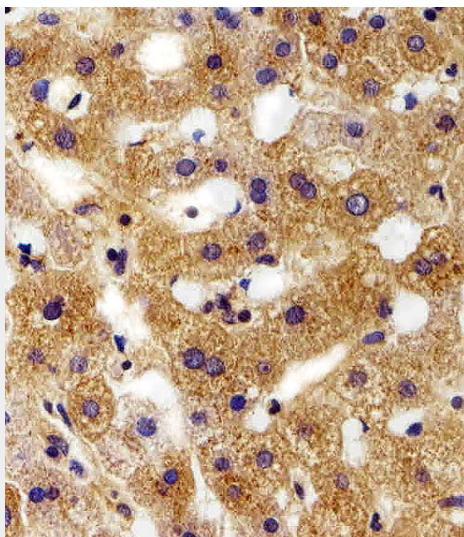
Provided below are standard protocols that you may find useful for product applications.

- [Western Blot](#)
- [Blocking Peptides](#)
- [Dot Blot](#)
- [Immunohistochemistry](#)
- [Immunofluorescence](#)
- [Immunoprecipitation](#)
- [Flow Cytometry](#)
- [Cell Culture](#)

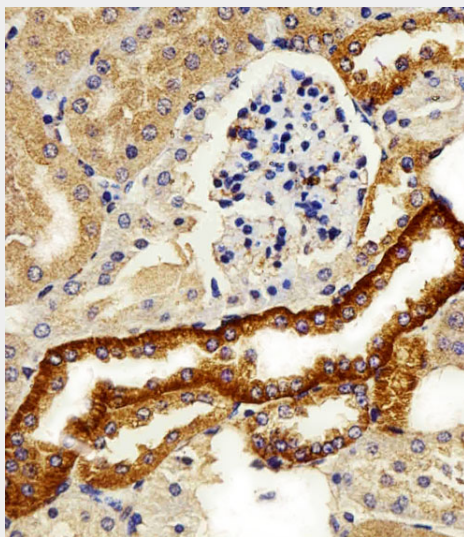
### FXYD6 Antibody (C-term) - Images



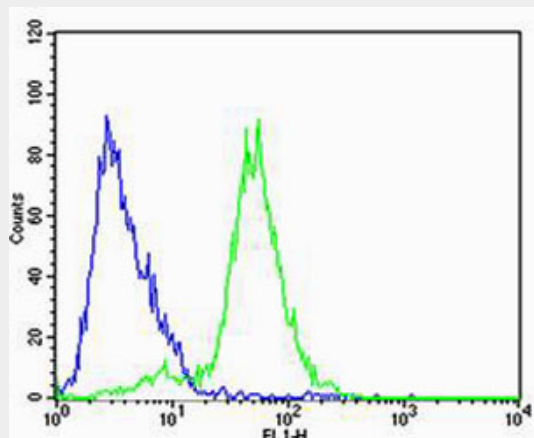
All lanes : Anti-FXYD6 Antibody (C-term) at 1:1000 dilution Lane 1: Human cerebellum tissue lysate Lane 2: Human brain tissue lysate Lane 3: SH-SY5Y whole cell lysate Lane 4: Mouse brain tissue lysate Lane 5: Mouse cerebellum tissue lysate Lane 6: Rat brain tissue lysate Lysates/proteins at 20 µg per lane. Secondary Goat Anti-Rabbit IgG, (H+L), Peroxidase conjugated at 1/10000 dilution. Predicted band size : 11 kDa Blocking/Dilution buffer: 5% NFDM/TBST.



Immunohistochemical analysis of paraffin-embedded H. liver section using FXYD6 Antibody (C-term)(Cat#AP20610c). AP20610c was diluted at 1:100 dilution. A peroxidase-conjugated goat anti-rabbit IgG at 1:400 dilution was used as the secondary antibody, followed by DAB staining.



Immunohistochemical analysis of paraffin-embedded M. kidney section using FXYD6 Antibody (C-term)(Cat#AP20610c). AP20610c was diluted at 1:100 dilution. A peroxidase-conjugated goat anti-rabbit IgG at 1:400 dilution was used as the secondary antibody, followed by DAB staining.



Flow cytometric analysis of SH-SY5Y cells using FXYD6 Antibody (C-term)(green, Cat#AP20610c) compared to an isotype control of rabbit IgG(blue). AP20610c was diluted at 1:25 dilution. An Alexa Fluor® 488 goat anti-rabbit IgG at 1:400 dilution was used as the secondary antibody.

**FXYD6 Antibody (C-term) - References**

Wiemann S.,et al.Genome Res. 11:422-435(2001).  
Clark H.F.,et al.Genome Res. 13:2265-2270(2003).  
Kalnine N.,et al.Submitted (MAY-2003) to the EMBL/GenBank/DDBJ databases.  
Brandenberger R.,et al.Nat. Biotechnol. 22:707-716(2004).  
Ebert L.,et al.Submitted (JUN-2004) to the EMBL/GenBank/DDBJ databases.