

**GSTT1 Antibody (N-term)**  
**Purified Rabbit Polyclonal Antibody (Pab)**  
**Catalog # AP20614a****Specification**

---

**GSTT1 Antibody (N-term) - Product Information**

Application	WB,E
Primary Accession	<a href="#">P30711</a>
Reactivity	Human, Rat
Host	Rabbit
Clonality	Polyclonal
Isotype	Rabbit IgG
Calculated MW	27335

**GSTT1 Antibody (N-term) - Additional Information****Gene ID** 2952**Other Names**

Glutathione S-transferase theta-1, GST class-theta-1, Glutathione transferase T1-1, GSTT1

**Target/Specificity**

This GSTT1 antibody is generated from a rabbit immunized with a KLH conjugated synthetic peptide between 46-79 amino acids from the N-terminal region of human GSTT1.

**Dilution**

WB~~1:1000

E~~Use at an assay dependent concentration.

**Format**

Purified polyclonal antibody supplied in PBS with 0.09% (W/V) sodium azide. This antibody is purified through a protein A column, followed by peptide affinity purification.

**Storage**

Maintain refrigerated at 2-8°C for up to 2 weeks. For long term storage store at -20°C in small aliquots to prevent freeze-thaw cycles.

**Precautions**

GSTT1 Antibody (N-term) is for research use only and not for use in diagnostic or therapeutic procedures.

**GSTT1 Antibody (N-term) - Protein Information****Name** GSTT1

**Function** Conjugation of reduced glutathione to a wide number of exogenous and endogenous hydrophobic electrophiles. Acts on 1,2-epoxy- 3-(4-nitrophenoxy)propane, phenethylisothiocyanate 4-nitrobenzyl chloride and 4-nitrophenethyl bromide. Displays glutathione

peroxidase activity with cumene hydroperoxide.

#### **Cellular Location**

Cytoplasm.

#### **Tissue Location**

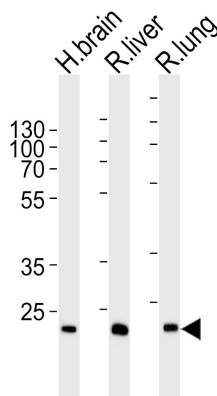
Found in erythrocyte. Expressed at low levels in liver. In lung, expressed at low levels in club cells and ciliated cells at the alveolar/bronchiolar junction. Absent from epithelial cells of larger bronchioles.

#### **GSTT1 Antibody (N-term) - Protocols**

Provided below are standard protocols that you may find useful for product applications.

- [Western Blot](#)
- [Blocking Peptides](#)
- [Dot Blot](#)
- [Immunohistochemistry](#)
- [Immunofluorescence](#)
- [Immunoprecipitation](#)
- [Flow Cytometry](#)
- [Cell Culture](#)

#### **GSTT1 Antibody (N-term) - Images**



Western blot analysis of lysates from human brain , rat liver and lung tissue lysate (from left to right), using GSTT1 Antibody (N-term)(Cat. #AP20614a). AP20614a was diluted at 1:1000 at each lane. A goat anti-rabbit IgG H&L(HRP) at 1:5000 dilution was used as the secondary antibody. Lysates at 35ug per lane.

#### **GSTT1 Antibody (N-term) - Background**

Conjugation of reduced glutathione to a wide number of exogenous and endogenous hydrophobic electrophiles. Acts on 1,2- epoxy-3-(4-nitrophenoxy)propane, phenethylisothiocyanate 4-nitrobenzyl chloride and 4-nitrophenethyl bromide. Displays glutathione peroxidase activity with cumene hydroperoxide.

**GSTT1 Antibody (N-term) - References**

Pemble S.,et al.Biochem. J. 300:271-276(1994).  
Jemth P.,et al.Arch. Biochem. Biophys. 348:247-254(1997).  
Sprenger R.,et al.Pharmacogenetics 10:557-565(2000).  
Iida A.,et al.Submitted (MAR-2001) to the EMBL/GenBank/DDBJ databases.  
Kalline N.,et al.Submitted (OCT-2004) to the EMBL/GenBank/DDBJ databases.