

**Zebrafish gfap Antibody (N-term)**  
**Purified Rabbit Polyclonal Antibody (Pab)**  
**Catalog # AP20618a****Specification**

---

**Zebrafish gfap Antibody (N-term) - Product Information**

Application	WB, IHC-P,E
Primary Accession	<a href="#">Q58EE9</a>
Reactivity	Zebrafish
Host	Rabbit
Clonality	Polyclonal
Isotype	Rabbit IgG
Antigen Region	2-36

**Zebrafish gfap Antibody (N-term) - Additional Information****Gene ID** 30646**Other Names**

Glial fibrillary acidic protein, GFAP, gfap

**Target/Specificity**

This Zebrafish gfap antibody is generated from a rabbit immunized with a KLH conjugated synthetic peptide between 2-36 amino acids from the N-terminal region of zebrafish gfap.

**Dilution**

WB~~1:1000

IHC-P~~1:25

E~~Use at an assay dependent concentration.

**Format**

Purified polyclonal antibody supplied in PBS with 0.09% (W/V) sodium azide. This antibody is purified through a protein A column, followed by peptide affinity purification.

**Storage**

Maintain refrigerated at 2-8°C for up to 2 weeks. For long term storage store at -20°C in small aliquots to prevent freeze-thaw cycles.

**Precautions**

Zebrafish gfap Antibody (N-term) is for research use only and not for use in diagnostic or therapeutic procedures.

**Zebrafish gfap Antibody (N-term) - Protein Information****Name** gfap**Cellular Location**

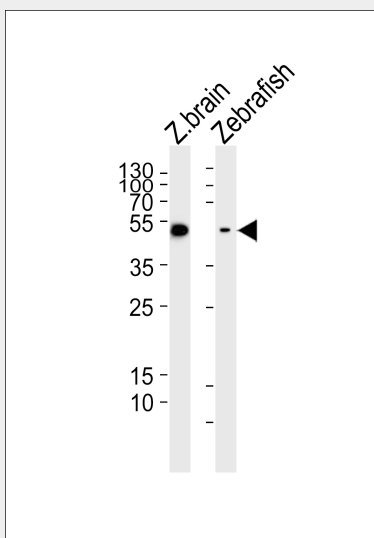
Cytoplasm, cytoskeleton. Note=Associated with intermediate filaments

## Zebrafish gfap Antibody (N-term) - Protocols

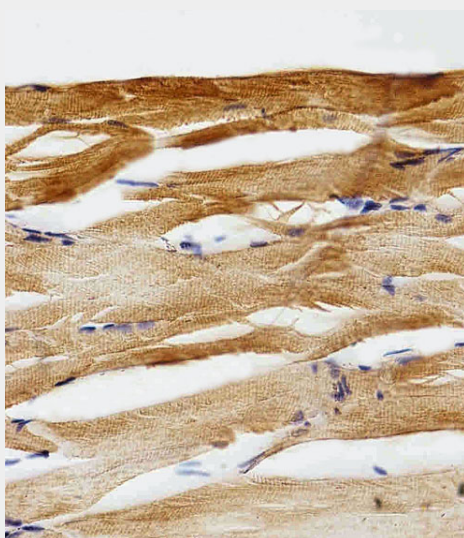
Provided below are standard protocols that you may find useful for product applications.

- [Western Blot](#)
- [Blocking Peptides](#)
- [Dot Blot](#)
- [Immunohistochemistry](#)
- [Immunofluorescence](#)
- [Immunoprecipitation](#)
- [Flow Cytometry](#)
- [Cell Culture](#)

## Zebrafish gfap Antibody (N-term) - Images



Western blot analysis of lysates from zebrafish brain, zebrafish tissue lysate (from left to right), using Zebrafish gfap Antibody (N-term) (Cat. #AP20618a). AP20618a was diluted at 1:1000 at each lane. A goat anti-rabbit IgG H&L (HRP) at 1:5000 dilution was used as the secondary antibody. Lysates at 35ug per lane.



Immunohistochemical analysis of paraffin-embedded zebrafish muscle section using Zebrafish gfap Antibody (N-term) (Cat#AP20618a). AP20618a was diluted at 1:25 dilution. A peroxidase-conjugated goat anti-rabbit IgG at 1:400 dilution was used as the secondary antibody, followed by DAB staining.

#### **Zebrafish gfap Antibody (N-term) - References**

Nielsen A.L.,et al.Gene 310:123-132(2003).

Emelyanov A.,et al.Submitted (SEP-2003) to the EMBL/GenBank/DDBJ databases.

Clark S.,et al.Submitted (AUG-1999) to the EMBL/GenBank/DDBJ databases.