

CFL2 Antibody (C-term)
Purified Rabbit Polyclonal Antibody (Pab)
Catalog # AP20625c**Specification**

CFL2 Antibody (C-term) - Product Information

Application	IF, WB,E
Primary Accession	Q9Y281
Other Accession	Q5XHH8 , Q5G6V9 , P45591 , P21566 , Q148F1
Reactivity	Human, Mouse
Predicted	Bovine, Chicken, Pig, Xenopus
Host	Rabbit
Clonality	Polyclonal
Isotype	Rabbit IgG
Calculated MW	18737

CFL2 Antibody (C-term) - Additional Information**Gene ID** 1073**Other Names**

Cofilin-2, Cofilin, muscle isoform, CFL2

Target/Specificity

This CFL2 antibody is generated from a rabbit immunized with a KLH conjugated synthetic peptide between 130-144 amino acids from the C-terminal region of human CFL2.

Dilution

IF~~1:25

WB~~1:1000

E~~Use at an assay dependent concentration.

Format

Purified polyclonal antibody supplied in PBS with 0.09% (W/V) sodium azide. This antibody is purified through a protein A column, followed by peptide affinity purification.

Storage

Maintain refrigerated at 2-8°C for up to 2 weeks. For long term storage store at -20°C in small aliquots to prevent freeze-thaw cycles.

Precautions

CFL2 Antibody (C-term) is for research use only and not for use in diagnostic or therapeutic procedures.

CFL2 Antibody (C-term) - Protein Information**Name** CFL2

Function Controls reversibly actin polymerization and depolymerization in a pH-sensitive manner. Its F-actin depolymerization activity is regulated by association with CSPR3 (PubMed:[19752190](#)). It has the ability to bind G- and F-actin in a 1:1 ratio of cofilin to actin. It is the major component of intranuclear and cytoplasmic actin rods. Required for muscle maintenance. May play a role during the exchange of alpha-actin forms during the early postnatal remodeling of the sarcomere (By similarity).

Cellular Location

Nucleus matrix. Cytoplasm, cytoskeleton. Note=Colocalizes with CSPR3 in the Z line of sarcomeres.

Tissue Location

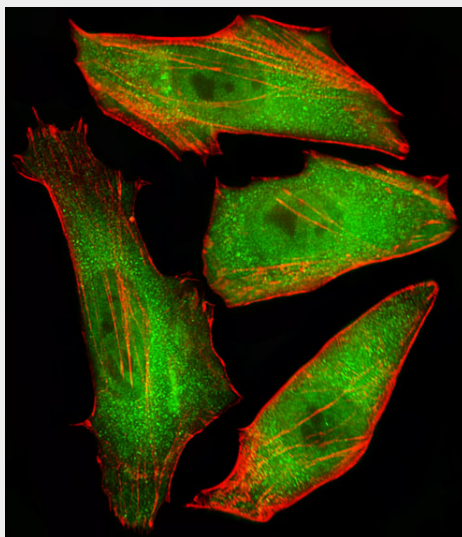
Isoform CFL2b is expressed predominantly in skeletal muscle and heart. Isoform CFL2a is expressed in various tissues

CFL2 Antibody (C-term) - Protocols

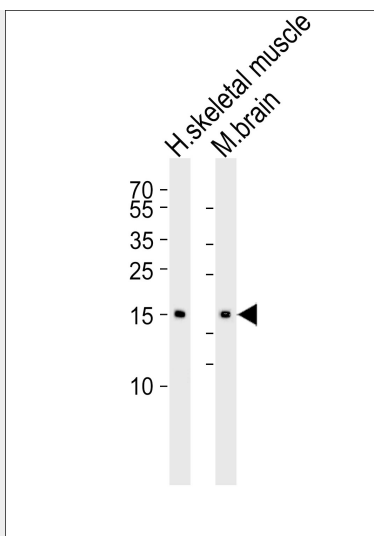
Provided below are standard protocols that you may find useful for product applications.

- [Western Blot](#)
- [Blocking Peptides](#)
- [Dot Blot](#)
- [Immunohistochemistry](#)
- [Immunofluorescence](#)
- [Immunoprecipitation](#)
- [Flow Cytometry](#)
- [Cell Culture](#)

CFL2 Antibody (C-term) - Images



Fluorescent image of HeLa cells stained with CFL2 Antibody (C-term)(Cat#AP20625c). AP20625c was diluted at 1:25 dilution. An Alexa Fluor 488-conjugated goat anti-rabbit IgG at 1:400 dilution was used as the secondary antibody (green). Cytoplasmic actin was counterstained with Alexa Fluor® 555 conjugated with Phalloidin (red).



Western blot analysis of lysates from human skeletal muscle and mouse brain tissue lysate (from left to right), using CFL2 Antibody (C-term) (Cat. #AP20625c). AP20625c was diluted at 1:1000 at each lane. A goat anti-rabbit IgG H&L (HRP) at 1:5000 dilution was used as the secondary antibody. Lysates at 35ug per lane.

CFL2 Antibody (C-term) - Background

Controls reversibly actin polymerization and depolymerization in a pH-sensitive manner. It has the ability to bind G- and F-actin in a 1:1 ratio of cofilin to actin. It is the major component of intranuclear and cytoplasmic actin rods (By similarity).

CFL2 Antibody (C-term) - References

Jin J., et al. Submitted (MAR-1999) to the EMBL/GenBank/DDBJ databases.
Thirion C., et al. Eur. J. Biochem. 268:3473-3482(2001).
Heilig R., et al. Nature 421:601-607(2003).
Mural R.J., et al. Submitted (SEP-2005) to the EMBL/GenBank/DDBJ databases.
Bienvenut W.V., et al. Submitted (MAR-2008) to UniProtKB.