

**PIP4K2C Antibody (N-term)**  
**Purified Rabbit Polyclonal Antibody (Pab)**  
**Catalog # AP20635a**

**Specification**

---

**PIP4K2C Antibody (N-term) - Product Information**

Application	WB,E
Primary Accession	<a href="#">Q8TBX8</a>
Other Accession	<a href="#">Q88370</a> , <a href="#">Q91XU3</a> , <a href="#">Q0P5F7</a>
Reactivity	Mouse, Rat
Predicted	Bovine
Host	Rabbit
Clonality	Polyclonal
Isotype	Rabbit IgG
Calculated MW	47300

**PIP4K2C Antibody (N-term) - Additional Information**

**Gene ID** 79837

**Other Names**

Phosphatidylinositol 5-phosphate 4-kinase type-2 gamma, Phosphatidylinositol 5-phosphate 4-kinase type II gamma, PI(5)P 4-kinase type II gamma, PIP4KII-gamma, PIP4K2C, PIP5K2C

**Target/Specificity**

This PIP4K2C antibody is generated from a rabbit immunized with a KLH conjugated synthetic peptide between 23-57amino acids from the N-terminal region of human PIP4K2C.

**Dilution**

WB~~1:1000

E~~Use at an assay dependent concentration.

**Format**

Purified polyclonal antibody supplied in PBS with 0.09% (W/V) sodium azide. This antibody is purified through a protein A column, followed by peptide affinity purification.

**Storage**

Maintain refrigerated at 2-8°C for up to 2 weeks. For long term storage store at -20°C in small aliquots to prevent freeze-thaw cycles.

**Precautions**

PIP4K2C Antibody (N-term) is for research use only and not for use in diagnostic or therapeutic procedures.

**PIP4K2C Antibody (N-term) - Protein Information**

**Name** PIP4K2C ([HGNC:23786](#))

**Synonyms** PIP5K2C

**Function** Phosphatidylinositol 5-phosphate 4-kinase with low enzymatic activity. May be a GTP sensor, has higher GTP-dependent kinase activity than ATP-dependent kinase activity. PIP4Ks negatively regulate insulin signaling through a catalytic-independent mechanism. They interact with PIP5Ks and suppress PIP5K-mediated PtdIns(4,5)P<sub>2</sub> synthesis and insulin- dependent conversion to PtdIns(3,4,5)P<sub>3</sub> (PubMed:[31091439](#)).

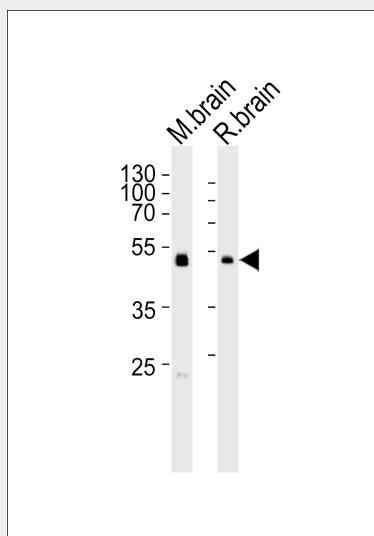
**Cellular Location**

Endoplasmic reticulum {ECO:0000250|UniProtKB:O88370}. Cytoplasm {ECO:0000250|UniProtKB:O88370}

**PIP4K2C Antibody (N-term) - Protocols**

Provided below are standard protocols that you may find useful for product applications.

- [Western Blot](#)
- [Blocking Peptides](#)
- [Dot Blot](#)
- [Immunohistochemistry](#)
- [Immunofluorescence](#)
- [Immunoprecipitation](#)
- [Flow Cytometry](#)
- [Cell Culture](#)

**PIP4K2C Antibody (N-term) - Images**

Western blot analysis of lysates from mouse brain and rat brain tissue lysate (from left to right), using PIP4K2C Antibody (N-term) (Cat. #AP20635a). AP20635a was diluted at 1:1000 at each lane. A goat anti-rabbit IgG H&L (HRP) at 1:5000 dilution was used as the secondary antibody. Lysates at 35 µg per lane.

**PIP4K2C Antibody (N-term) - Background**

May play an important role in the production of Phosphatidylinositol bisphosphate (PIP<sub>2</sub>), in the endoplasmic reticulum (By similarity).

**PIP4K2C Antibody (N-term) - References**

Ota T.,et al.Nat. Genet. 36:40-45(2004).

Scherer S.E.,et al.Nature 440:346-351(2006).

Mural R.J.,et al.Submitted (JUL-2005) to the EMBL/GenBank/DDBJ databases.

Daub H.,et al.Mol. Cell 31:438-448(2008).

Gauci S.,et al.Anal. Chem. 81:4493-4501(2009).