

DLG2 Antibody (Center)
Purified Rabbit Polyclonal Antibody (Pab)
Catalog # AP20636c**Specification**

DLG2 Antibody (Center) - Product Information

Application	WB,E
Primary Accession	Q15700
Reactivity	Mouse, Rat
Host	Rabbit
Clonality	Polyclonal
Isotype	Rabbit IgG
Calculated MW	97552

DLG2 Antibody (Center) - Additional Information**Gene ID** 1740**Other Names**

Disks large homolog 2, Channel-associated protein of synapse-110, Chapsyn-110, Postsynaptic density protein PSD-93, DLG2

Target/Specificity

This DLG2 antibody is generated from a rabbit immunized with a KLH conjugated synthetic peptide between 614-648 amino acids from the Central region of human DLG2.

Dilution

WB~~1:1000

E~~Use at an assay dependent concentration.

Format

Purified polyclonal antibody supplied in PBS with 0.09% (W/V) sodium azide. This antibody is purified through a protein A column, followed by peptide affinity purification.

Storage

Maintain refrigerated at 2-8°C for up to 2 weeks. For long term storage store at -20°C in small aliquots to prevent freeze-thaw cycles.

Precautions

DLG2 Antibody (Center) is for research use only and not for use in diagnostic or therapeutic procedures.

DLG2 Antibody (Center) - Protein Information**Name** DLG2

Function Required for perception of chronic pain through NMDA receptor signaling. Regulates surface expression of NMDA receptors in dorsal horn neurons of the spinal cord. Interacts with the

cytoplasmic tail of NMDA receptor subunits as well as inward rectifying potassium channels. Involved in regulation of synaptic stability at cholinergic synapses. Part of the postsynaptic protein scaffold of excitatory synapses (By similarity).

Cellular Location

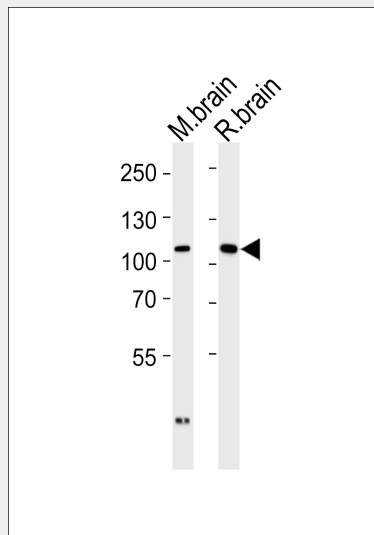
Cell membrane {ECO:0000250|UniProtKB:Q63622}; Lipid-anchor {ECO:0000250|UniProtKB:Q63622}. Postsynaptic density {ECO:0000250|UniProtKB:Q63622}. Synapse. Membrane {ECO:0000250|UniProtKB:Q63622}. Cell projection, axon {ECO:0000250|UniProtKB:Q63622}. Perikaryon {ECO:0000250|UniProtKB:Q63622}. Note=Concentrated in soma and postsynaptic density of a subset of neurons {ECO:0000250|UniProtKB:Q63622}

DLG2 Antibody (Center) - Protocols

Provided below are standard protocols that you may find useful for product applications.

- [Western Blot](#)
- [Blocking Peptides](#)
- [Dot Blot](#)
- [Immunohistochemistry](#)
- [Immunofluorescence](#)
- [Immunoprecipitation](#)
- [Flow Cytometry](#)
- [Cell Culture](#)

DLG2 Antibody (Center) - Images



Western blot analysis of tissue lysates from mouse brain and rat brain (from left to right), using DLG2 Antibody (Center)(Cat. #AP20636c). AP20636c was diluted at 1:1000 at each lane. A goat anti-rabbit IgG H&L(HRP) at 1:5000 dilution was used as the secondary antibody. Lysates at 35ug per lane.

DLG2 Antibody (Center) - Background

Required for perception of chronic pain through NMDA receptor signaling. Regulates surface expression of NMDA receptors in dorsal horn neurons of the spinal cord. Interacts with the cytoplasmic tail of NMDA receptor subunits as well as inward rectifying potassium channels.

Involved in regulation of synaptic stability at cholinergic synapses. Part of the postsynaptic protein scaffold of excitatory synapses (By similarity).

DLG2 Antibody (Center) - References

Kim E.,et al.Neuron 17:103-113(1996).

Ota T.,et al.Nat. Genet. 36:40-45(2004).

Bechtel S.,et al.BMC Genomics 8:399-399(2007).

Taylor T.D.,et al.Nature 440:497-500(2006).

Totoki Y.,et al.Submitted (MAR-2005) to the EMBL/GenBank/DDBJ databases.