

**PHF1 Antibody (N-term)**  
**Purified Rabbit Polyclonal Antibody (Pab)**  
**Catalog # AP20638a**

**Specification**

---

**PHF1 Antibody (N-term) - Product Information**

Application	WB,E
Primary Accession	<a href="#">O43189</a>
Other Accession	<a href="#">O9Z1B8</a>
Reactivity	Mouse
Host	Rabbit
Clonality	Polyclonal
Isotype	Rabbit IgG
Calculated MW	62106

**PHF1 Antibody (N-term) - Additional Information**

**Gene ID** 5252

**Other Names**

PHD finger protein 1, Protein PHF1, hPHF1, Polycomb-like protein 1, hPCL1, PHF1, PCL1

**Target/Specificity**

This PHF1 antibody is generated from a rabbit immunized with a KLH conjugated synthetic peptide between 164-197 amino acids from the N-terminal region of human PHF1.

**Dilution**

WB~~1:1000

E~~Use at an assay dependent concentration.

**Format**

Purified polyclonal antibody supplied in PBS with 0.09% (W/V) sodium azide. This antibody is purified through a protein A column, followed by peptide affinity purification.

**Storage**

Maintain refrigerated at 2-8°C for up to 2 weeks. For long term storage store at -20°C in small aliquots to prevent freeze-thaw cycles.

**Precautions**

PHF1 Antibody (N-term) is for research use only and not for use in diagnostic or therapeutic procedures.

**PHF1 Antibody (N-term) - Protein Information**

**Name** PHF1

**Synonyms** PCL1

**Function** Polycomb group (PcG) that specifically binds histone H3 trimethylated at 'Lys-36' (H3K36me3) and recruits the PRC2 complex. Involved in DNA damage response and is recruited at double-strand breaks (DSBs). Acts by binding to H3K36me3, a mark for transcriptional activation, and recruiting the PRC2 complex: it is however unclear whether recruitment of the PRC2 complex to H3K36me3 leads to enhance or inhibit H3K27me3 methylation mediated by the PRC2 complex. According to some reports, PRC2 recruitment by PHF1 promotes H3K27me3 and subsequent gene silencing by inducing spreading of PRC2 and H3K27me3 into H3K36me3 loci (PubMed:[18285464](#), PubMed:[23273982](#)). According to another report, PHF1 recruits the PRC2 complex at double-strand breaks (DSBs) and inhibits the activity of PRC2 (PubMed:[23142980](#)). Regulates p53/TP53 stability and prolongs its turnover: may act by specifically binding to a methylated form of p53/TP53.

#### Cellular Location

Nucleus. Cytoplasm, cytoskeleton, microtubule organizing center, centrosome. Note=Localizes specifically to the promoters of numerous target genes. Localizes to double-strand breaks (DSBs) sites following DNA damage. Co-localizes with NEK6 in the centrosome

#### Tissue Location

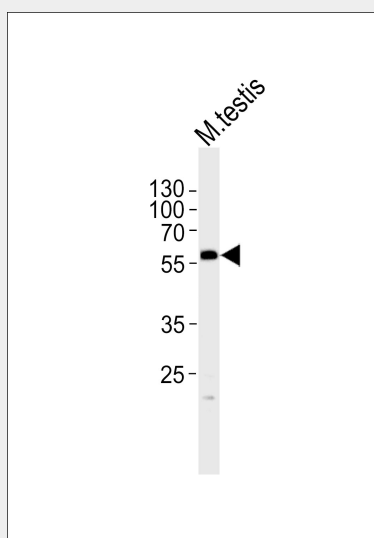
Highest levels in heart, skeletal muscle, and pancreas, lower levels in brain, placenta, lung, liver and kidney

#### PHF1 Antibody (N-term) - Protocols

Provided below are standard protocols that you may find useful for product applications.

- [Western Blot](#)
- [Blocking Peptides](#)
- [Dot Blot](#)
- [Immunohistochemistry](#)
- [Immunofluorescence](#)
- [Immunoprecipitation](#)
- [Flow Cytometry](#)
- [Cell Culture](#)

#### PHF1 Antibody (N-term) - Images



Western blot analysis of lysate from mouse testis tissue lysate, using PHF1 Antibody (N-term)(Cat. #AP20638a). AP20638a was diluted at 1:1000. A goat anti-rabbit IgG H&L(HRP) at

1:5000 dilution was used as the secondary antibody. Lysate at 35ug.

#### **PHF1 Antibody (N-term) - Background**

Polycomb group (PcG) that specifically binds histone H3 trimethylated at 'Lys-36' (H3K36me3) and recruits the PRC2 complex. Involved in DNA damage response and is recruited at double-strand breaks (DSBs). Acts by binding to H3K36me3, a mark for transcriptional activation, and recruiting the PRC2 complex: it is however unclear whether recruitment of the PRC2 complex to H3K36me3 leads to enhance or inhibit H3K27me3 methylation mediated by the PRC2 complex. According to some reports, PRC2 recruitment by PHF1 promotes H3K27me3 and subsequent gene silencing by inducing spreading of PRC2 and H3K27me3 into H3K36me3 loci (PubMed:18285464 and PubMed:23273982). According to another report, PHF1 recruits the PRC2 complex at double-strand breaks (DSBs) and inhibits the activity of PRC2 (PubMed:23142980). Regulates p53/TP53 stability and prolongs its turnover: may act by specifically binding to a methylated form of p53/TP53.

#### **PHF1 Antibody (N-term) - References**

Coulson M., et al. Genomics 48:381-383(1998).  
Wang J.H., et al. Submitted (MAR-1998) to the EMBL/GenBank/DDBJ databases.  
Mungall A.J., et al. Nature 425:805-811(2003).  
Mural R.J., et al. Submitted (JUL-2005) to the EMBL/GenBank/DDBJ databases.  
Micci F., et al. Cancer Res. 66:107-112(2006).