

**GDF1 Antibody (N-term)**  
**Purified Rabbit Polyclonal Antibody (Pab)**  
**Catalog # AP2063a****Specification**

---

**GDF1 Antibody (N-term) - Product Information**

Application	IHC-P, WB,E
Primary Accession	<a href="#">P27539</a>
Reactivity	Human
Host	Rabbit
Clonality	Polyclonal
Isotype	Rabbit IgG
Calculated MW	39475
Antigen Region	30-59

**GDF1 Antibody (N-term) - Additional Information****Gene ID** 2657**Other Names**

Embryonic growth/differentiation factor 1, GDF-1, GDF1

**Target/Specificity**

This GDF1 antibody is generated from rabbits immunized with a KLH conjugated synthetic peptide between 30-59 amino acids from the N-terminal region of human GDF1.

**Dilution**

IHC-P~~1:10~50

WB~~1:1000

E~~Use at an assay dependent concentration.

**Format**

Purified polyclonal antibody supplied in PBS with 0.09% (W/V) sodium azide. This antibody is prepared by Saturated Ammonium Sulfate (SAS) precipitation followed by dialysis against PBS.

**Storage**

Maintain refrigerated at 2-8°C for up to 2 weeks. For long term storage store at -20°C in small aliquots to prevent freeze-thaw cycles.

**Precautions**

GDF1 Antibody (N-term) is for research use only and not for use in diagnostic or therapeutic procedures.

**GDF1 Antibody (N-term) - Protein Information****Name** GDF1**Function** May mediate cell differentiation events during embryonic development.

**Cellular Location**  
Secreted.

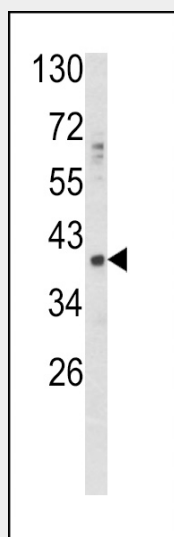
**Tissue Location**  
Expressed in the brain.

### **GDF1 Antibody (N-term) - Protocols**

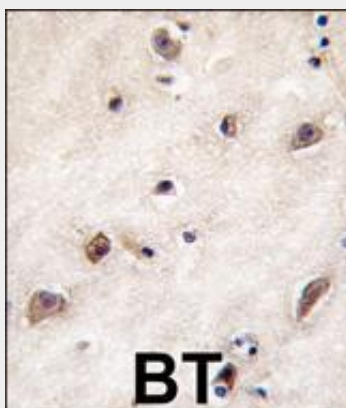
Provided below are standard protocols that you may find useful for product applications.

- [Western Blot](#)
- [Blocking Peptides](#)
- [Dot Blot](#)
- [Immunohistochemistry](#)
- [Immunofluorescence](#)
- [Immunoprecipitation](#)
- [Flow Cytometry](#)
- [Cell Culture](#)

### **GDF1 Antibody (N-term) - Images**



Western blot analysis of GDF1 Antibody (N-term) (Cat. #AP2063a) in HepG2 cell line lysates (35ug/lane). GDF1 (arrow) was detected using the purified Pab.



Formalin-fixed and paraffin-embedded human brain tissue reacted with GDF1 antibody (N-term), which was peroxidase-conjugated to the secondary antibody, followed by DAB staining. This data demonstrates the use of this antibody for immunohistochemistry; clinical relevance has not been evaluated.

#### **GDF1 Antibody (N-term) - Background**

GDF1 is a member of the bone morphogenetic protein (BMP) family and the TGF-beta superfamily. This group of proteins is characterized by a polybasic proteolytic processing site which is cleaved to produce a mature protein containing seven conserved cysteine residues. The members of this family are regulators of cell growth and differentiation in both embryonic and adult tissues. Studies in rodents suggest that this protein is involved in the establishment of left-right asymmetry in early embryogenesis and in neural development in later embryogenesis. This protein is transcribed from a bicistronic mRNA which also encodes the longevity assurance gene.

#### **GDF1 Antibody (N-term) - References**

Ducy, P., et al., Kidney Int. 57(6):2207-2214 (2000). Jiang, J.C., et al., Genome Res. 8(12):1259-1272 (1998). Polymeropoulos, M.H., et al., Nat. Genet. 4(4):381-386 (1993). Lee, S.J., Proc. Natl. Acad. Sci. U.S.A. 88(10):4250-4254 (1991).