

BMP9 (GDF2) Antibody (N-term)
Purified Rabbit Polyclonal Antibody (Pab)
Catalog # AP2064b**Specification**

BMP9 (GDF2) Antibody (N-term) - Product Information

Application	WB,E
Primary Accession	Q9UK05
Reactivity	Human
Host	Rabbit
Clonality	Polyclonal
Isotype	Rabbit IgG
Calculated MW	47320

BMP9 (GDF2) Antibody (N-term) - Additional Information**Gene ID** 2658**Other Names**

Growth/differentiation factor 2, GDF-2, Bone morphogenetic protein 9, BMP-9, GDF2, BMP9

Target/Specificity

This BMP9 (GDF2) antibody is generated from rabbits immunized with a KLH conjugated synthetic peptide selected from the N-terminal region of human GDF2.

Dilution

WB~~1:1000

E~~Use at an assay dependent concentration.

Format

Purified polyclonal antibody supplied in PBS with 0.09% (W/V) sodium azide. This antibody is prepared by Saturated Ammonium Sulfate (SAS) precipitation followed by dialysis against PBS.

Storage

Maintain refrigerated at 2-8°C for up to 2 weeks. For long term storage store at -20°C in small aliquots to prevent freeze-thaw cycles.

Precautions

BMP9 (GDF2) Antibody (N-term) is for research use only and not for use in diagnostic or therapeutic procedures.

BMP9 (GDF2) Antibody (N-term) - Protein Information**Name** GDF2**Synonyms** BMP9**Function** Potent circulating inhibitor of angiogenesis. Signals through the type I activin receptor

ACVRL1 but not other Alks. Signaling through SMAD1 in endothelial cells requires TGF-beta coreceptor endoglin/ENG.

Cellular Location

Secreted

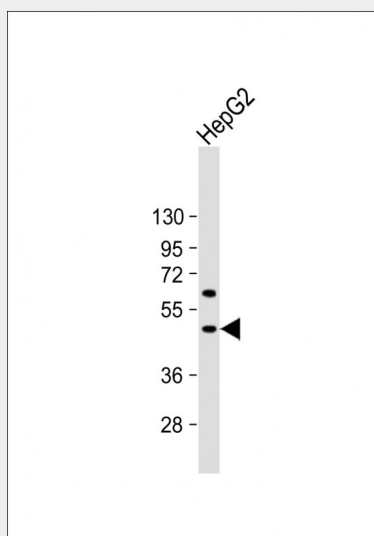
Tissue Location

Detected in blood plasma (at protein level).

BMP9 (GDF2) Antibody (N-term) - Protocols

Provided below are standard protocols that you may find useful for product applications.

- [Western Blot](#)
- [Blocking Peptides](#)
- [Dot Blot](#)
- [Immunohistochemistry](#)
- [Immunofluorescence](#)
- [Immunoprecipitation](#)
- [Flow Cytometry](#)
- [Cell Culture](#)

BMP9 (GDF2) Antibody (N-term) - Images

Anti-BMP9 (GDF2) Antibody (N-term) at 1:1000 dilution + HepG2 whole cell lysate. Lysates/proteins at 20 µg per lane. Secondary Goat Anti-Rabbit IgG, (H+L), Peroxidase conjugated at 1/10000 dilution. Predicted band size : 47 kDa. Blocking/Dilution buffer: 5% NFDM/TBST.

BMP9 (GDF2) Antibody (N-term) - Background

GDF2 is a member of the bone morphogenetic protein (BMP) family and the TGF-beta superfamily. This group of proteins is characterized by a polybasic proteolytic processing site which is cleaved to produce a mature protein containing seven conserved cysteine residues. The members of this family are regulators of cell growth and differentiation in both embryonic and adult tissues. Studies in rodents suggest that this protein plays a role in the adult liver and in differentiation of cholinergic central nervous system neurons.

BMP9 (GDF2) Antibody (N-term) - References

Majumdar, M.K., et al., J. Cell. Physiol. 189(3):275-284 (2001).
Lopez-Coviella, I., et al., Science 289(5477):313-316 (2000).
Miller, A.F., et al., J. Biol. Chem. 275(24):17937-17945 (2000).